

MITSUBISHI MOTORS  
GENUINE PARTS

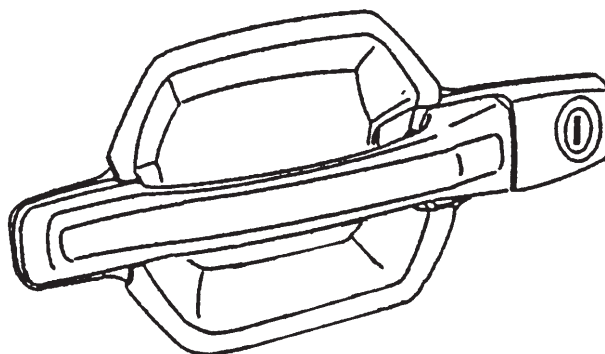
# PAJERO/MONTERO

## DOOR HANDLE PROTECTOR

### MZ380310EX (Front Set)

### MZ380311EX (Rear Set)

## INSTALLATION AND HANDLING INSTRUCTIONS



Thank you for purchasing the Mitsubishi Genuine Accessory.  
To install and use the product correctly with proper knowledge of it, read this publication carefully.  
Keep this publication for reference when maintenance is required.

### Attention

- This publication gives precautionary instructions in the boxes titled as follows.  
Read through these instructions thoroughly.



#### Caution

Describes precautions that should be observed in order to prevent injury or damage to the vehicle or its components, which may occur if sufficient care is not taken.



#### Note

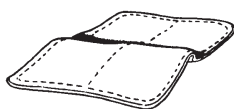
Provides additional information that facilitates installation work.

- Failure to follow these instructions not only prevents the product from working properly but may lead to trouble with the vehicle. Be sure to follow all instructions carefully.
- If there is anything unclear about the installation, handling and/or usage of the product, contact your Mitsubishi Motors dealer for clarification.
- Mitsubishi Motors Corporation is not responsible for any defects or difficulties caused by or resulting from the failure to follow given instructions.
- We recommend you to have the installation performed at an authorized Mitsubishi Motors dealer.

To the dealer:  
Be sure that the customer receives this publication.

## ■ TOOLS (Make the following tools ready for use.)

Shop towel



Isopropyl alcohol or degreaser



Dryer (for use at temperatures below 15°C)

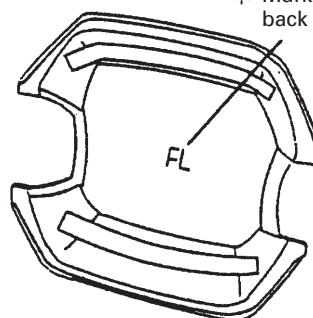


## ■ COMPONENTS (Make sure that all of the following components were included in the kit.)

※: Identification mark

MZ380310EX	Front, right side: 1	FR
	Front, left side: 1	FL
MZ380311EX	Rear, right side: 1	RR
	Rear, left side: 1	RL

※ Marked at center of the back for identification



## ■ PRECAUTIONS

- Low temperatures below 15°C reduce the adhesion of adhesive tape. When attaching the protector in such a condition, warm the door handle section with a dryer or the like first.
- If the protector attached is removed to be redone, it loses adhesion, separating easily. Make sure of the taping position before attachment.

## INSTALLATION PROCEDURES

### A. PREPARATORY WORK

- 1) Wipe off wax and stains completely from the vehicle body surface to which the protector will be attached using a shop towel moistened with isopropyl alcohol or degreaser.

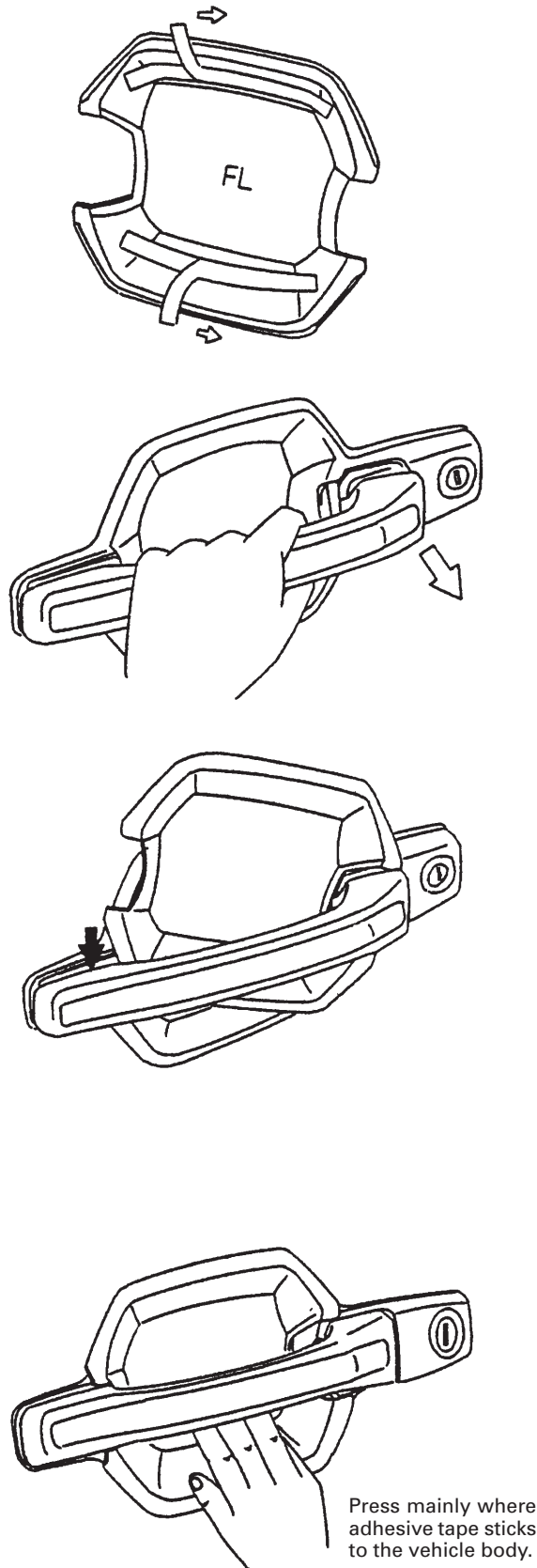


### Caution

The protector will not stick fast to an unclean surface and will be easily separated.

Check

## B. INSTALLING THE PROTECTOR



- 1) Remove backing strip from the adhesive tape affixed to the back of the protector.

### **Caution**

Adhesion of the tape is reduced if its adhesive surface is touched. After application tape is removed, keep your hands off the exposed adhesive surface of the tape.

- 2) Lock the door to which the protector is installed. Pull the door handle all the way in the opening direction.

- 3) With the handle pulled, install the protector into place, fitting its rear side in first, then putting its front side in through the gap between the handle and vehicle body.

### **Caution**

Do not apply excessive force to the protector as it may damage the protector. If the front side of the protector is hard to insert through the gap, pull the handle further to widen the gap or push the protector rearward to make the insertion smooth.

- 4) When the protector is set under the door handle, release the handle. Position the protector correctly and then press it against the vehicle body to such an extent that the vehicle rocks a little to fit the protector securely.

### **Note**

If the ambient temperature is low, warm the door handle section with a dryer.

- 5) Remove the protective sheet from the protector.
- 6) Perform the same procedure for the rest of the protectors.

**Caution**

Do not wash the vehicle for at least 24 hours after the protector is attached. It takes time before the adhesive tape holds steadily on to the surface.

Check	
-------	--

## CARE AND HANDLING

Clean the protector by washing in water or wiping with dry cloth. Do not use solid wax.