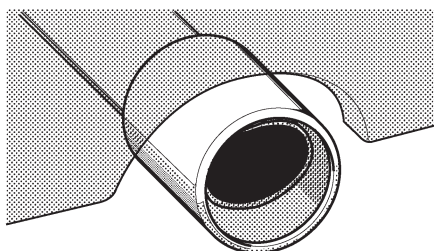


OUTLANDER / LANCER (for 2.0 L) MUFFLER CUTTER MZ570256EX INSTALLATION AND HANDLING INSTRUCTIONS



Thank you for purchasing the Mitsubishi Genuine Accessory.
To install and use the product correctly with proper knowledge of it, read this publication carefully.
Keep this publication for reference when maintenance is required.

Attention

- This publication gives precautionary instructions in the boxes titled as follows.
Read through these instructions thoroughly.



Caution

Describes precautions that should be observed in order to prevent injury or damage to the vehicle or its components, which may occur if sufficient care is not taken.



Note

Provides additional information that facilitates installation work.

- Failure to follow these instructions not only prevents the product from working properly but may lead to trouble with the vehicle. Be sure to follow all instructions carefully.
- If there is anything unclear about the installation, handling and/or usage of the product, contact your Mitsubishi Motors dealer for clarification.
- Mitsubishi Motors Corporation is not responsible for any defects or difficulties caused by or resulting from the failure to follow given instructions.
- We recommend you to have the installation performed at an authorized Mitsubishi Motors dealer.

To the dealer:
Be sure that the customer receives this publication.

■ TOOLS (Make the following tools ready for use.)

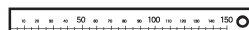
Shop towel



Wrench (10 mm)

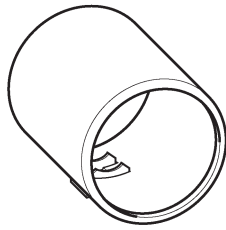


Scale (150 mm)



■ COMPONENTS (Make sure that all of the following components were included in the kit.)

① Muffler Cutter: 1

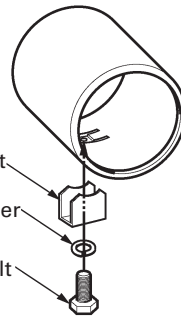


The following parts are supplied as assembled to the Muffler Cutter.

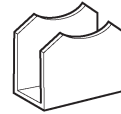
④ Under bracket

③ Spring washer

② Bolt



④ Under bracket: 1



③ Spring washer (M6): 1



② Bolt (M6 x 20): 1

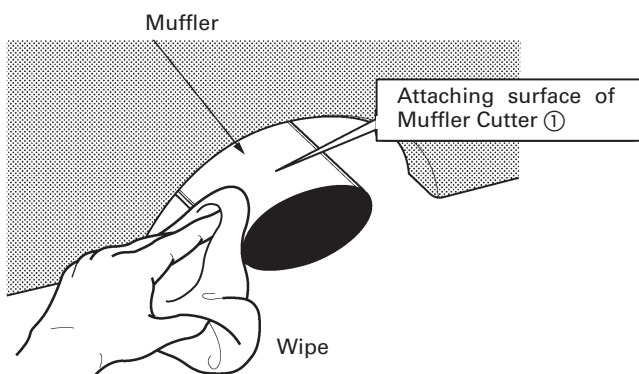


■ PRECAUTIONS

- Never perform this work immediately after turning off the engine. Perform the work after the vehicle's muffler has cooled down sufficiently.
- Take sufficient care not to damage the vehicle body during installation.
- Strictly observe the instructions for positioning of the product. Otherwise it may interfere with the vehicle's muffler or may cause abnormal exhaust noise.

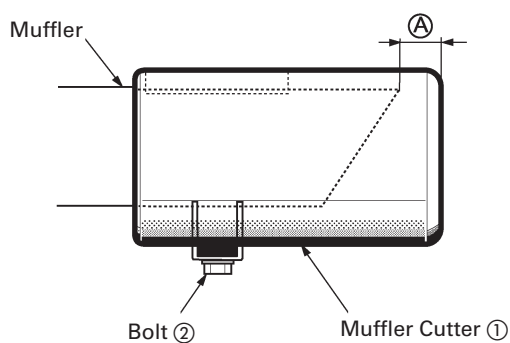
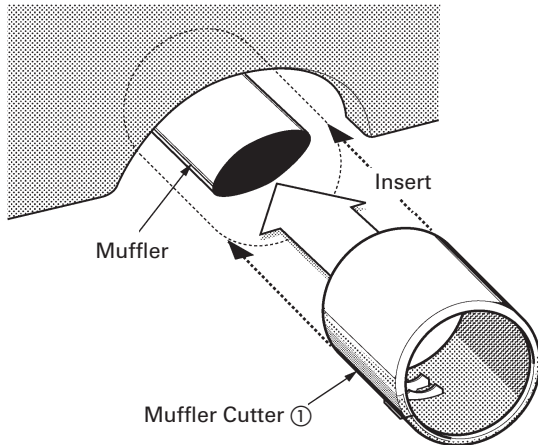
INSTALLATION PROCEDURES

A. PREPARATORY WORK



- 1) Wipe clean the product attaching surface on the muffler with shop towel.

B. INSTALLING THE MUFFLER CUTTER



1) Place the Muffler Cutter ① over the muffler.

2) Position the Muffler Cutter ① as shown in the drawing.

Muffler end to Muffler Cutter end dimension ^A: 10 mm

3) After confirming the installation position, tighten the bolt ②.



Caution

- Tighten the bolt ② securely. Otherwise the Muffler Cutter ① may fall off.
- Do not overtighten the bolt ② and deform the muffler.

CARE AND HANDLING

- The bolt may become loose due to break-in. Be sure to retighten the bolt.
- Periodically check the bolt for looseness.
- This product is made of stainless steel. It may, however, rust depending on the environment in which it is used (seawater, salty wind, thawing agent, acid rain, etc.). If the product has rusted, wash it with water, wipe it with cloth moistened with neutral detergent solution, wash it again with water, and finally wipe it dry with cloth.