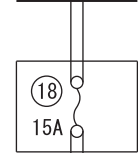


- APPROACH LAMP
- AUDIO SYSTEM
- CENTRAL DOOR LOCKING SYSTEM
- CENTRE DISPLAY
- DOOR AJAR WARNING BUZZER
- DOOR LAMP
- ELECTRIC RETRACTABLE
- REMOTE CONTROLLED MIRROR
- FOOT LAMP AND CEILING LAMP
- FORGOTTEN KEY
- PREVENTION FUNCTION
- FRONT FOG LAMP
- HANDS-FREE INTERFACE SYSTEM
- HEADLAMP
- HEADLAMP WASHER
- MMCS
- POWER WINDOWS
- REAR FOG LAMP
- REAR SEAT
- ENTERTAINMENT SYSTEM
- REAR WIPER AND WASHER
- ROOM LAMP, PERSONAL LAMP, LUGGAGE COMPARTMENT LAMP AND IGNITION KEY CYLINDER ILLUMINATION LAMP
- SEAT BELT WARNING BUZZER
- SECURITY ALARM
- SPARE CONNECTOR (FOR ACCESSORY)
- SPARE CONNECTOR (FOR AUDIO)
- SPARE CONNECTOR (FOR REAR DISPLAY)
- SUNROOF
- TAIL LAMP, POSITION LAMP, LICENCE PLATE LAMP AND LIGHTING MONITOR BUZZER
- TURN-SIGNAL LAMP AND HAZARD WARNING LAMP
- USB BOX
- WINDSHIELD WIPER AND WASHER

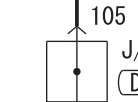
FUSIBLE LINK ①



0.85R-B  
15 (D-241)

0.85R-B  
②

R-B  
105



162

R-B \*1  
R-B \*2



(R-W)  
2

1

STEERING WHEEL SENSOR (D-308)



- FRONT FOG LAMP
- HEADLAMP
- HEADLAMP WASHER
- SECURITY ALARM
- TAIL LAMP, POSITION LAMP, LICENCE PLATE LAMP AND LIGHTING MONITOR BUZZER
- WINDSHIELD WIPER AND WASHER

COMBINATION METER



<T> (SB) \*1  
<T> (GR) \*2

14 \*1  
12 \*2

<T> (G-0)  
4

3

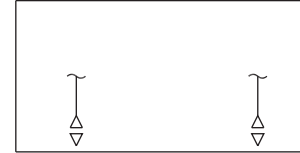
J/C (CAN1) (D-03)

13

2

3

TRANSFER-ECU (D-124)



(B-R)  
28

6

<T> (B-P)  
17

15

<T> (G-0)  
16

16

A/T-ECU (D-140)

4

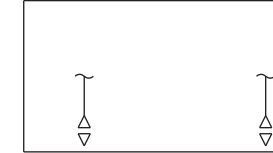
22

<T> (B-Y)  
9

11

17 \*1  
11 \*2

ENGINE-ECU (D-215)



<T> (L-B) \*1  
<T> (GR) \*2

16

<T> (G-Y)  
12

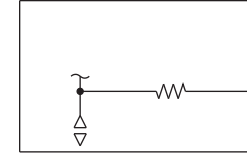
22

<T> (B-Y)  
3

12 \*1  
14 \*2

9

ASTC-ECU (D-223)



<T> (R-G)  
12

13

<T> (B-Y)  
6

3

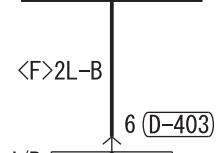
12

G AND YAW RATE SENSOR (D-18)

2

2

IGNITION SWITCH (IG1)



<F>2L-B  
6 (D-403)

7.5A  
25 (D-405)

(W-B)  
①

(W-B)  
③

(W-B)  
①

(W-B)  
5 (D-228)

(W-B)  
③

(W-B)  
①

GND  
4

B  
⑨

⑨

⑨

⑨

⑨

⑨

- FRONT FOG LAMP
- HEADLAMP
- HEADLAMP AUTOMATIC LEVELLING SYSTEM
- HEADLAMP WASHER
- IMMOBILIZER SYSTEM <4M41>
- REAR FOG LAMP
- REAR WIPER AND WASHER
- SECURITY ALARM
- SPARE CONNECTOR (FOR TRAILER LAMPS)
- SRS
- SUPER SELECT 4WD II SYSTEM
- TAIL LAMP, POSITION LAMP, LICENCE PLATE LAMP AND LIGHTING MONITOR BUZZER
- TURN-SIGNAL LAMP AND HAZARD WARNING LAMP
- WINDSHIELD WIPER AND WASHER

- AUDIO SYSTEM
- CENTRE DISPLAY
- CRUISE CONTROL SYSTEM
- ENGINE CONTROL SYSTEM
- HEADLAMP AUTOMATIC LEVELLING SYSTEM
- METER AND GAUGE
- MMCS
- SPARE CONNECTOR (FOR AUDIO)

NOTE  
\*1: LHD  
\*2: RHD

