

SERVICE BULLETIN

AFTERSALES SERVICE OFFICE, MITSUBISHI MOTORS CORPORATION

| | | |
|---|---|-------------------|
| PURPOSE : INFORMATION | ISSUE NO. : MSB-07E00-024 | DATE : 2007-12-05 |
| SUBJECT : EXHAUST MANIFOLD BRACKET INSTALLATION SERVICE POINT | <div> <div><MODEL></div> <div>(EUR)</div> <div>OUTLANDER</div> <div>(GS45X)(CW0W)</div> </div> <div> <div><M/Y></div> <div>08-</div> </div> | |
| GROUP : GENERAL | | |

1. Description:

In order to install the exhaust manifold bracket securely, the installation service point for the bracket is established. This Service Bulletin contains the added description.

2. Applicable Vehicles & Manual:

Four-wheel drive vehicles equipped with 4B1 engine

| Manual | Pub. No. | Title (Info-ID) | Attachment |
|---------------------------------------|-----------------------|---|--------------------------|
| 2008 OUTLANDER Workshop Manual CD-ROM | CGXE08E1-CD (English) | Exhaust Manifold Removal and Installation (M151-00-331-34500-01) | Attachment 1 (1/2 – 2/2) |
| | CGXS08E1-CD (Spanish) | Transfer Assembly Removal and Installation (M221-00-320-29700-01) | Attachment 2 (1/2 – 2/2) |
| | CGXF08E1-CD (French) | Transfer Assembly Removal and Installation (M231-21-100-06600-01) | |
| | CGXG08E1-CD (German) | | |

3. Effective Date:

From the first production models

4. Remarks:

Gr15 – Intake and Exhaust – Exhaust Manifold Removal and Installation ••• See Attachment 1.
 Gr22A – Manual Transmission – Transfer Assy Removal and Installation ••• See Attachment 2.
 Gr23A – CVT – Transfer Assy Removal and Installation ••• See Attachment 2.

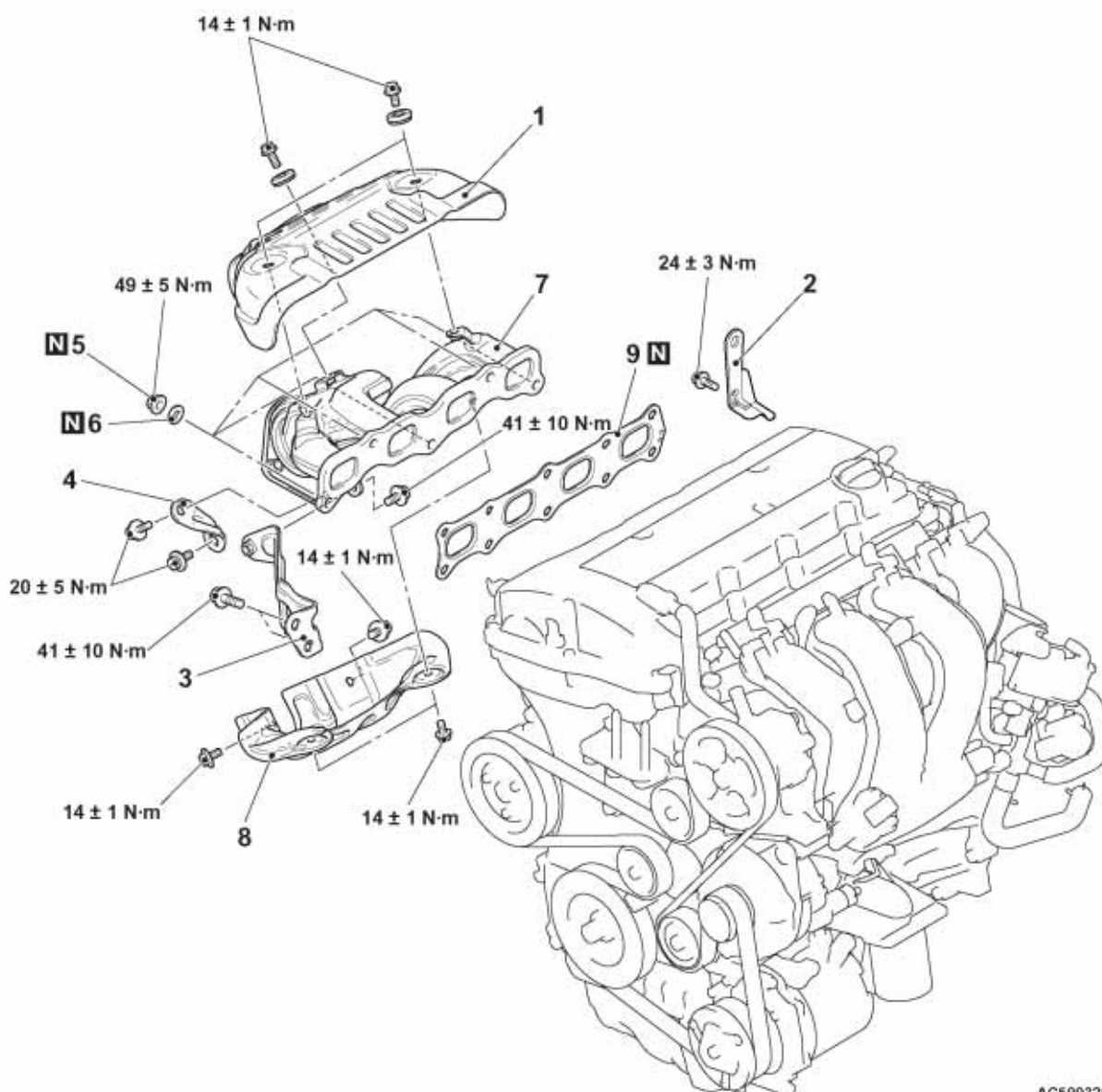
EXHAUST MANIFOLD

REMOVAL AND INSTALLATION <4B1>

M1151003302070

Pre-removal and Post-installation Operation

- Front Exhaust Pipe Removal and Installation <4B1> (Refer to P.15-19).
- Strut Tower Bar Removal and Installation (Refer to GROUP 42A – Strut Tower Bar).



AC509326AB

Removal steps

- <Added>
- >>B<<
- <<A>> >>A<<
1. Exhaust manifold cover
 2. Engine hanger
 3. Exhaust manifold bracket
 4. Exhaust manifold bracket
 5. Exhaust manifold nut

Removal steps (Continued)

- <<A>> >>A<<
- <<A>> >>A<<
- <<A>> >>A<<
6. Exhaust manifold washer
 7. Exhaust manifold
 8. Exhaust manifold cover
 9. Exhaust manifold gasket

REMOVAL SERVICE POINT

<<A>> EXHAUST MANIFOLD NUT/EXHAUST MANIFOLD WASHER/EXHAUST MANIFOLD/EXHAUST MANIFOLD COVER REMOVAL

1. Remove the mounting bolts of the exhaust manifold cover and move them to the position where they will not interfere with the loosening of the exhaust manifold nut.
2. Loosen the exhaust manifold nut, and remove the exhaust manifold nut and the exhaust manifold washer.
3. Remove the exhaust manifold and the exhaust manifold cover as a set.

INSTALLATION SERVICE POINT

>>A<< EXHAUST MANIFOLD COVER/EXHAUST MANIFOLD/EXHAUST MANIFOLD WASHER/EXHAUST MANIFOLD NUT INSTALLATION

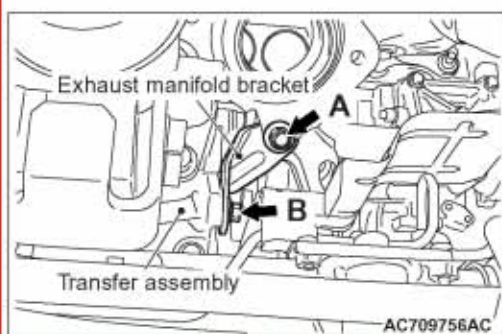
1. Install the exhaust manifold cover to the exhaust manifold (with mounting bolts removed), install the exhaust manifold and the exhaust manifold cover to the engine as a set.
2. Remove the exhaust manifold cover and move it to the position where it will not interfere with the installation of the exhaust manifold nut.
3. Install the new exhaust manifold nut and exhaust manifold washer, and tighten the exhaust manifold nut to the specified torque.

Tightening torque: $49 \pm 5 \text{ N}\cdot\text{m}$

4. Install the exhaust manifold cover to the exhaust manifold, and tighten the exhaust manifold cover to the specified torque.

Tightening torque: $14 \pm 1 \text{ N}\cdot\text{m}$

<Added>



>>B<< EXHAUST MANIFOLD BRACKET INSTALLATION

1. Make sure that the exhaust manifold bracket is closely contacted with the exhaust manifold and transfer assembly, and then temporarily tighten the bolts.
2. Tighten bolt A on the exhaust manifold side in the figure to the specified torque.
3. Tighten bolt B on the transfer assembly side in the figure to the specified torque.

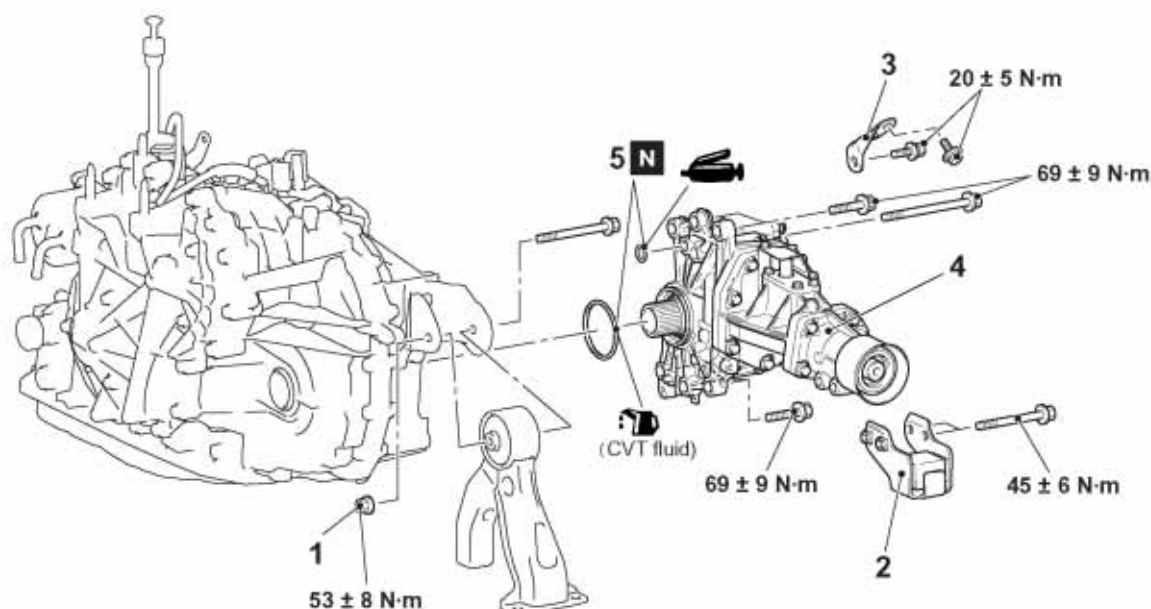
Tightening torque: $20 \pm 5 \text{ N}\cdot\text{m}$

Tightening torque: $20 \pm 5 \text{ N}\cdot\text{m}$

REMOVAL AND INSTALLATION

Pre-removal and post-installation operation

- Engine room under cover front A, B, D and side cover removal and installation (Refer to GROUP 51 – Under Cover M15110196.)
- CVT fluid draining and refilling (Refer to M12312118.)
- Transfer oil draining and refilling (Refer to M12312112.)
- Front exhaust pipe removal and installation (Refer to GROUP 15–Front Exhaust Pipe Muffler M11510087.)
- Propeller shaft removal and installation (Refer to GROUP 25–Propeller Shaft M12510010.)
- Centre member removal and installation (Refer to GROUP 32–Crossmember M13210023.)



AC506694AE

Removal steps

1. Flanged nut
- Drive shaft <RH> and output shaft removal and installation (Refer to GROUP 26–Drive Shaft Assembly M12610035.)

<<A>> **<Added>** >>A<<

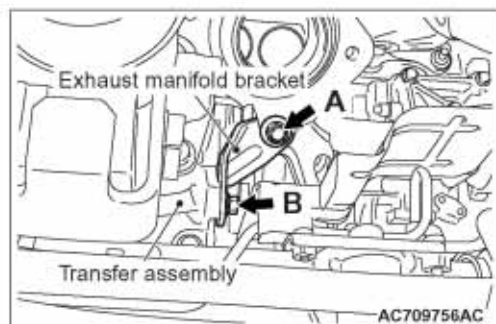
Removal steps

2. Dynamic damper
3. Exhaust manifold bracket
4. Transfer assembly
5. O-ring

REMOVAL SERVICE POINTS

<<A>> TRANSFER ASSEMBLY REMOVAL

Move the engine and transmission assembly toward the front of the vehicle to make a gap between the engine/transmission assembly and the crossmember. Pull out the transfer assembly through this gap.



INSTALLATION SERVICE POINTS

>>A<< EXHAUST MANIFOLD BRACKET INSTALLATION

1. Make sure that the exhaust manifold bracket is closely contacted with the exhaust manifold and transfer assembly, and then temporarily tighten the bolts.
2. Tighten bolt A on the exhaust manifold side in the figure to the specified torque.
Tightening torque: 20 ± 5 N·m
3. Tighten bolt B on the transfer assembly side in the figure to the specified torque.
Tightening torque: 20 ± 5 N·m

<Added>