



# SERVICE BULLETIN

AFTERSALES SERVICE OFFICE, MITSUBISHI MOTORS CORPORATION

PURPOSE : INFORMATION	ISSUE NO. : MSB-07E11-005	DATE : 2007-08-20
SUBJECT : INSTALLATION SERVICE POINT FOR INTERCOOLER	<div> <div>&lt;MODEL&gt;</div> <div>(EUR)</div> <div>OUTLANDER</div> <div>(GS45X)(CW0W)</div> </div> <div> <div>&lt;M/Y&gt;</div> <div>08</div> </div>	
GROUP : ENGINE		

## 1. Description:

The installation service point for the Intercooler is established in the applicable Workshop Manual. This Service Bulletin contains the added service procedures.

## 2. Applicable Manual:

Manual	Pub. No.	Title (Info-ID)	Attachment
2008 OUTLANDER Workshop Manual	CGXE08E1-CD (English),	Intercooler Removal and Installation <BSY> (M151-00-240-33500-00)	Attachment 1, 3
	CGXG08E1-CD (German), CGXF08E1-CD (French), CGXS08E1-CD (Spanish)	Intercooler Removal and Installation <4HN> (M151-00-240-34600-00)	Attachment 2, 3

## 15-10

INTAKE AND EXHAUST  
INTERCOOLER <BSY, 4HN>

## INTERCOOLER &lt;BSY, 4HN&gt;

## REMOVAL AND INSTALLATION &lt;BSY&gt;

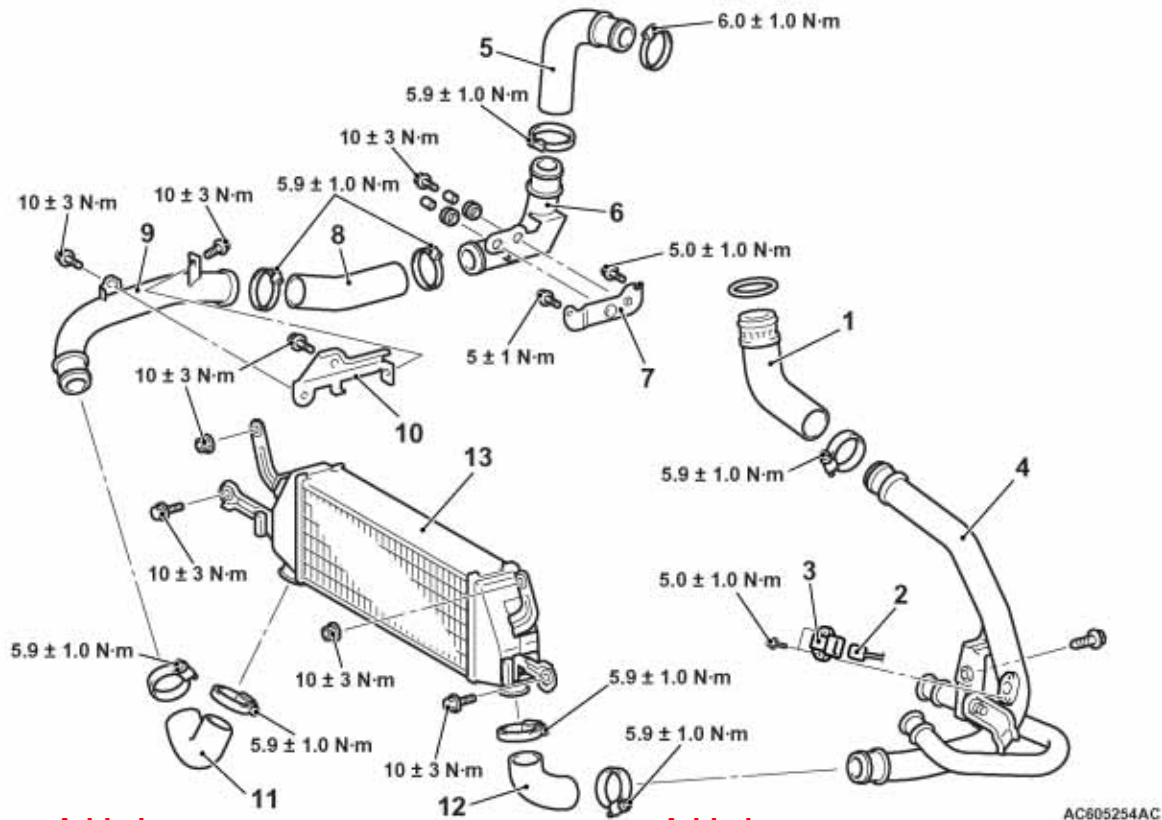
M1151002400335

**Pre-removal operation**

- Engine Room Under Cover Front A, C Removal (Refer to GROUP 51 – Under Cover ).
- Engine Coolant Draining (Refer to GROUP 14 – On-vehicle Service, Engine Coolant Replacement <BSY> ).
- Battery and Battery Tray Removal (Refer to GROUP 54A – Battery ).
- Air Cleaner Intake Duct and Air Cleaner Assembly Removal <BSY> (Refer to P.15-7).
- Front Bumper Assembly Removal (Refer to GROUP 51 – Front Bumper Assembly ).

**Post-installation operation**

- Front Bumper Assembly Installation (Refer to GROUP 51 – Front Bumper Assembly ).
- Air Cleaner Intake Duct and Air Cleaner Assembly Installation <BSY> (Refer to P.15-7).
- Battery and Battery Tray Installation (Refer to GROUP 54A – Battery ).
- Engine Coolant Refilling (Refer to GROUP 14 – On-vehicle Service, Engine Coolant Replacement <BSY> ).
- Engine Room Under Cover Front A, C Installation (Refer to GROUP 51 – Under Cover ).



AC605254AC

&lt;Added&gt;

**Removal steps**

1. Air hose D
2. Manifold absolute pressure sensor connector connection
3. Manifold absolute pressure sensor
- Radiator lower hose (Refer to GROUP 14 – Radiator <BSY> ).
4. Air pipe C
5. Air hose E

&lt;Added&gt;

**Removal steps (Continued)**

6. Air pipe A
7. Air pipe bracket
8. Air hose A
9. Air pipe B assembly
10. Air pipe B bracket
11. Air hose B
12. Air hose C
13. Intercooler assembly

Insert Attachment 3

## INTAKE AND EXHAUST INTERCOOLER <BSY, 4HN>

**15-11**

## REMOVAL AND INSTALLATION <4HN>

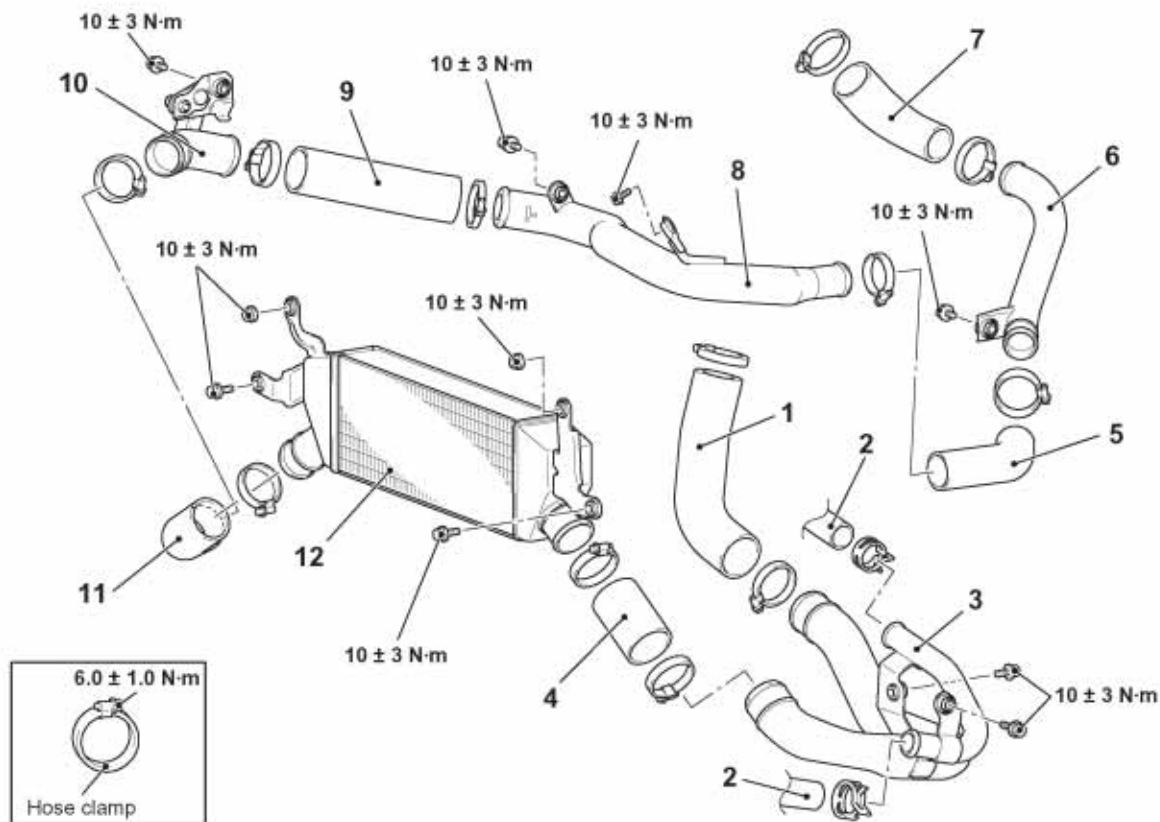
M1151002400346

### Pre-removal operation

- Engine Room Under Cover Front A, C and Engine Room Side Cover Removal (Refer to GROUP 51 – Under Cover ).
- Engine Coolant Draining (Refer to GROUP 14 – On-vehicle Service, Engine Coolant Replacement <4HN> ).
- Air Cleaner Intake Duct Removal <4HN> (Refer to P.15-8).
- Battery and Battery Tray Removal (Refer to GROUP 54A – Battery ).
- Front Bumper Assembly Removal (Refer to GROUP 51 – Front Bumper Assembly ).

### Post-installation operation

- Front Bumper Assembly Installation (Refer to GROUP 51 – Front Bumper Assembly ).
- Battery and Battery Tray Installation (Refer to GROUP 54A – Battery ).
- Air Cleaner Intake Duct Installation <4HN> (Refer to P.15-8).
- Engine Coolant Refilling (Refer to GROUP 14 – On-vehicle Service, Engine Coolant Replacement <4HN> ).
- Engine Room Under Cover Front A, C and Engine Room Side Cover Installation (Refer to GROUP 51 – Under Cover ).



AC613186AB

**<Added>**

### Removal steps

1. Air hose D  
2. Radiator lower hose connection  
3. Air pipe C  
4. Air hose C  
5. Air hose F  
6. Air pipe D

**<Added>**

### Removal steps (Continued)

- |       |     |                      |
|-------|-----|----------------------|
| >>A<< | 7.  | Air hose E           |
| >>A<< | 8.  | Air pipe B           |
| >>A<< | 9.  | Air hose A           |
| >>A<< | 10. | Air pipe A           |
| >>A<< | 11. | Air hose B           |
|       | 12. | Intercooler assembly |



&lt;Added&gt;

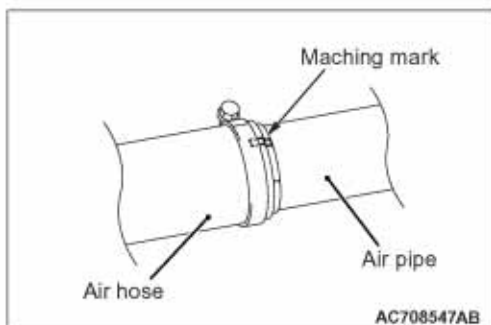
## INTAKE AND EXHAUST INTERCOOLER

15-3

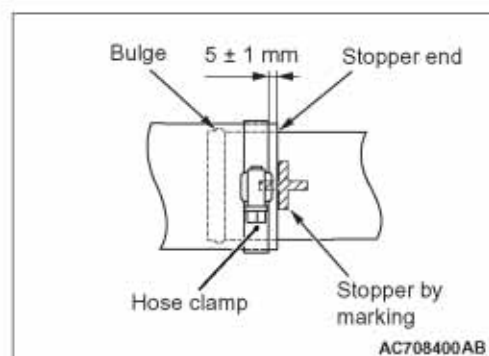
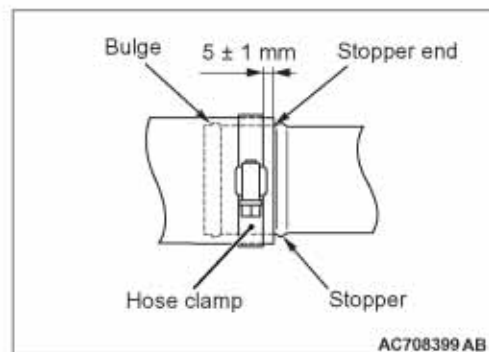
### INSTALLATION SERVICE POINT

#### >>A<< AIR HOSE AND AIR PIPE INSTALLATION

1. Shall be degreased hose and pipe, if there is oil on insertion area of hose and pipe.



2. Install hose with matching mark aligned in the figure.



3. Insert hose to stopper end and not overlap with stopper.
4. Place the hose clamp as shown in the figure so that it does not overlap with the bulge and the stopper end. Then, set the hose clamp  $5 \pm 1$  mm away from the stopper.