

SERVICE BULLETIN

AFTERSALES SERVICE OFFICE, MITSUBISHI MOTORS CORPORATION

PURPOSE : INFORMATION	ISSUE NO. : MSB-08E13-002B	DATE : 2008-03-20
SUBJECT : CAUTIONARY INSTRUCTION FOR ENGINE-ECU REMOVAL AND INSTALLATION	<div> <div><MODEL></div> <div>(EUR/RUSSIA)</div> <div>LANCER</div> <div>(GS41)(CY0A),</div> <div>OUTLANDER</div> <div>(GS45X)(CW0W)</div> </div> <div> <div><M/Y></div> <div>07-</div> </div>	
GROUP : FUEL		

1. Description:

A cautionary instruction for the engine-ECU removal and installation is modified. This Service Bulletin contains the new instruction.

2. Applicable Manuals:

<EUR/RUSSIA>

Manual	Pub. No.	Page and Title (Info-ID)	Attachment
2007 OUTLANDER Workshop Manual	N/A	P.13C-323 Engine-ECU Removal and Installation <6B3> (M131-03-380-29600-01)	Attachment 1

<EUR>

Manual	Pub. No.	Title (Info-ID)	Attachment
2008 OUTLANDER Workshop Manual	CGXE08E2-CD/ CGXS08E2-CD/ CGXF08E2-CD/ CGXG08E2-CD (English/Spanish/ French/German)	Engine-ECU Removal and Installation <6B3> (M131-03-380-71300-01)	Attachment 1
		Engine-ECU Removal and Installation <4B1> (M131-03-380-72400-01)	
2008 LANCER Workshop Manual	CG1E08E1-CD/ CG1S08E1-CD/ CG1F08E1-CD/ CG1G08E1-CD (English/Spanish/ French/German)	Engine-ECU Removal and Installation <4A9> (M131-03-380-84300-01)	Attachment 2
		Engine-ECU Removal and Installation <BWC> (M133-00-920-21700-01)	

MULTIPOINT FUEL INJECTION (MPI)
ENGINE-ECU

ENGINE-ECU

REMOVAL AND INSTALLATION

M1131033800713

⚠ CAUTION

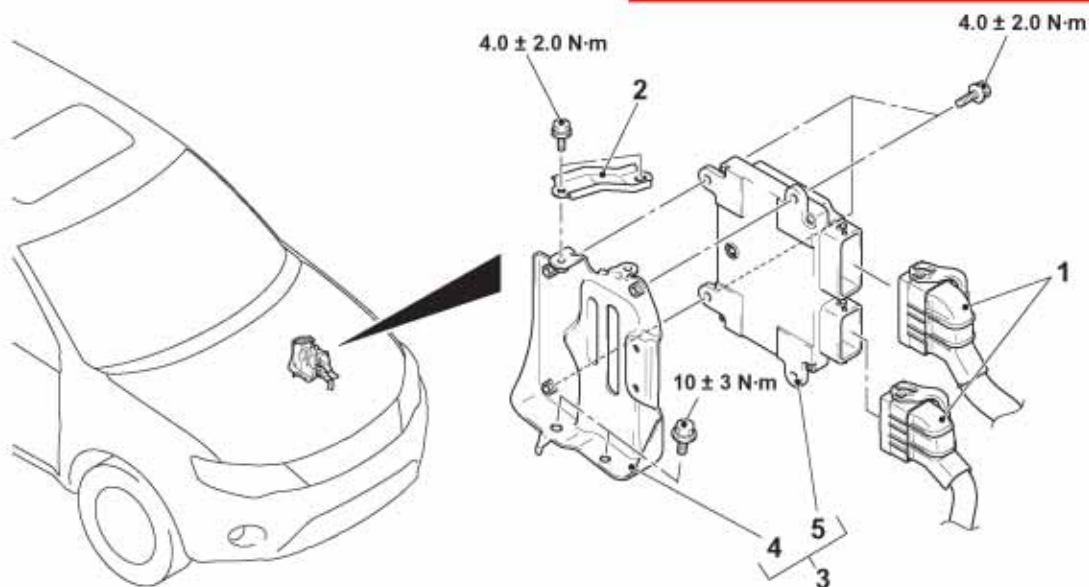
- When the engine-ECU is replaced, do not replace the immobilizer ECU (WCM) or KOS-ECU simultaneously. When multiple ECUs are to be replaced, always replace only one ECU at a time and complete necessary ID registration using M.U.T.-III. (Refer to GROUP 42B – Troubleshooting, ID Code Registration Necessity Judgment Table) <Vehicle with KOS installed> or (Refer to GROUP 42C – Troubleshooting, ID Code Registration Necessity Judgment Table) <Vehicle with WCM installed>
- After the engine-ECU replacement, idling speed may be unstable because the MPI engine learning is not completed. To make it stable, let the system learn the idling (Refer to GROUP 00 – Precautions before Service, Learning Procedure for Idling in MPI Engine).
- After the replacement of the engine-ECU, register a key code using M.U.T.-III [Refer to GROUP 00 – Precautions before Service, How to Perform Chassis Number (Chassis No.) Writing]. <Old>
- For replacement of the engine-ECU, use an engine-ECU for which the vehicle identification number entry and coding are completed. If diagnosis code No. P0630 chassis number not programmed or No. P1676 variant coding system is set in the engine-ECU, replace it with an engine-ECU to which the same vehicle identification number has been entered and the same coding has been made as for the relevant vehicle.

Pre-removal and Post-installation Operation

- Air Cleaner Assembly Removal and Installation (Refer to GROUP 15 – Air Cleaner).

<New>

When the engine-ECU is replaced, save the chassis number and perform the variant coding.



AC606213AB

>>A<<

Removal steps

- Initialisation procedure (Installation only)
- 1. Engine-ECU connectors
- 2. Engine control modulator stay

Removal steps (Continued)

- 3. Engine-ECU and engine control modulator bracket
- 4. Engine control modulator bracket
- 5. Engine-ECU

MULTIPOINT FUEL INJECTION (MPI) ENGINE-ECU

ENGINE-ECU

REMOVAL AND INSTALLATION

M1131033800B43

⚠ CAUTION

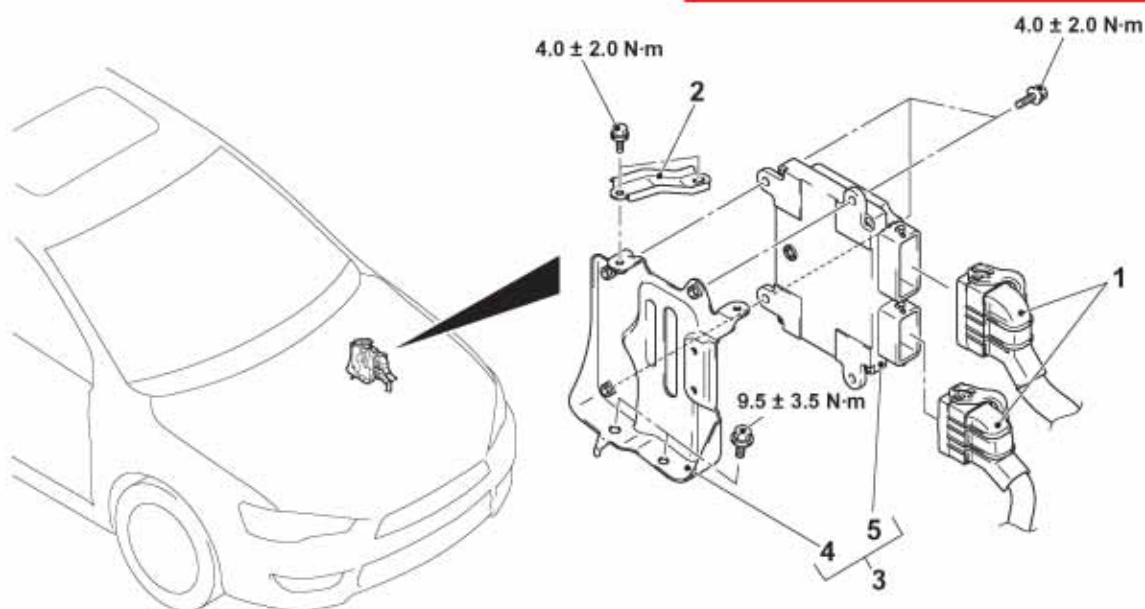
- When the engine-ECU is replaced, do not replace the immobilizer ECU (WCM) or KOS-ECU simultaneously. When multiple ECUs are to be replaced, always replace only one ECU at a time and complete necessary ID registration using M.U.T.-III (Refer to GROUP 42B – Troubleshooting, ID Code Registration Necessity Judgment Table) <Vehicle with KOS installed> (Refer to GROUP 42C – Troubleshooting, ID Code Registration Necessity Judgment Table) <Vehicle with WCM installed>.
- After the engine-ECU replacement, idling speed may be unstable because the MPI engine learning is not completed. To make it stable, let the system learn the idling (Refer to GROUP 00 – Precautions before Service, Learning Procedure for Idling in MPI Engine).
- After the replacement of the engine-ECU, register a key code using M.U.T.-III (Refer to GROUP 00 – Precautions before Service, How to Perform Chassis Number Writing). <Old>
- For replacement of the engine-ECU, use an engine-ECU for which the vehicle identification number entry and coding are completed. If diagnosis code No. P0630 chassis number not programmed or No. P1676 variant coding system is set in the engine-ECU, replace it with an engine-ECU to which the same vehicle identification number has been entered and the same coding has been made as for the relevant vehicle.

Pre-removal and post-installation operation

- Air Cleaner Assembly Removal and Installation (Refer to GROUP 15 – Air Cleaner).

<New>

When the engine-ECU is replaced, save the chassis number and perform the variant coding.



AC613515AB

- >>A<<
- Removal steps**
- Initialisation operation (only at installation)
 - 1. Engine-ECU connector
 - 2. ECU stay

- Removal steps (Continued)**
- Engine-ECU and Engine-ECU bracket assembly
 - Engine-ECU bracket
 - Engine-ECU