

SERVICE BULLETIN

AFTERSALES SERVICE OFFICE, MITSUBISHI MOTORS CORPORATION

PURPOSE : INFORMATION	ISSUE NO. : MSB-08E34-001	DATE : 2008-02-05
SUBJECT : NUTS FOR INSTALLATION OF UPPER ARMS IN REAR SUSPENSION CROSSMEMBER	<div> <div><MODEL></div> <div>(EUR/RUSSIA)</div> <div>OUTLANDER</div> <div>(GS45X)(CW0W)</div> </div> <div> <div><M/Y></div> <div>Aug.07-</div> </div>	
GROUP : REAR SUSPENSION		

1. Description:

To improve productivity, the nuts which are used to install the upper arms in the rear suspension crossmember are changed from weld nuts to flange nuts. This Service Bulletin contains the modified illustrations containing the changed nuts.

2. Applicable Manuals:

Manual	Pub. No.	Title (Info-ID)	Attachment
2007 OUTLANDER Workshop Manual CD-ROM	CGXE07E1-CD (English) CGXS07E1-CD (Spanish) CGXF07E1-CD (French) CGXG07E1-CD (German)	Control Link, Upper Arm and Lower Arm Removal and Installation (M341-00-480-37600-01) Rear Suspension Crossmember Removal and Installation (M341-00-680-41300-01)	Attachment 1, 2
2008 OUTLANDER Workshop Manual CD-ROM	CGXE08E2-CD (English) CGXS08E2-CD (Spanish) CGXF08E2-CD (French) CGXG08E2-CD (German)	Control Link, Upper Arm and Lower Arm Removal and Installation (M341-00-480-50300-01) Rear Suspension Crossmember Removal and Installation (M341-00-680-51000-01)	Attachment 3-5

3. Effective Date:

From the vehicles produced in the beginning of August 2007

REAR SUSPENSION CONTROL LINK, UPPER ARM AND LOWER ARM

CONTROL LINK, UPPER ARM AND LOWER ARM REMOVAL AND INSTALLATION

M1341004800376

⚠ CAUTION

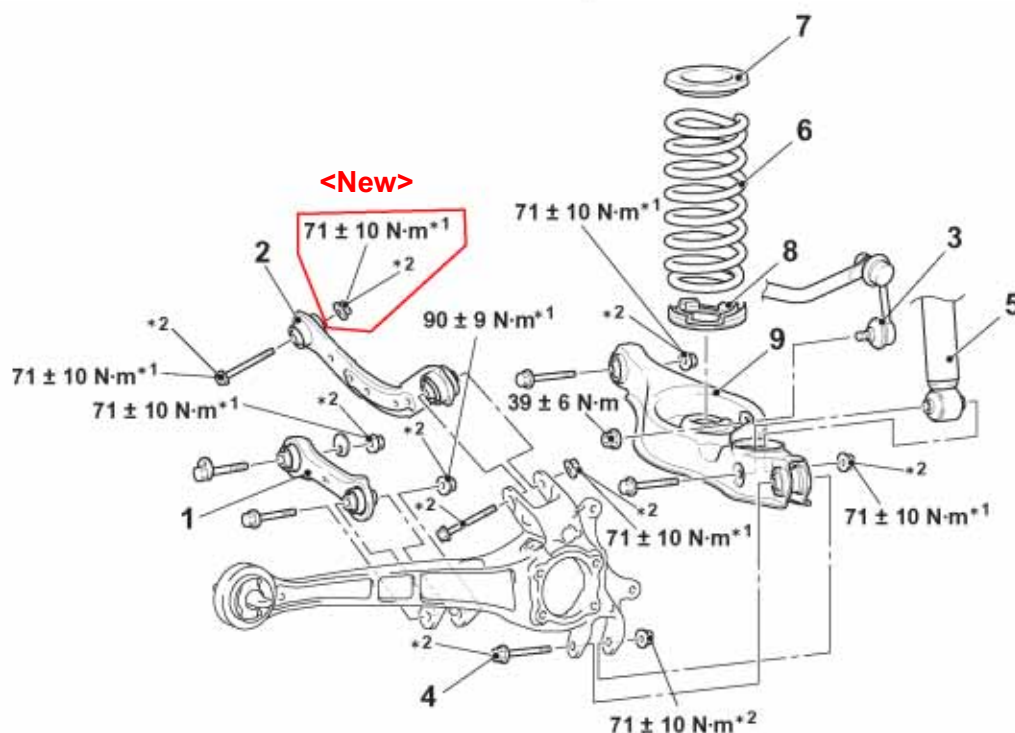
- The parts indicated by *¹ should be temporarily tightened, and then fully tightened with the vehicle standing on the ground and the curb weight condition.
- The parts indicated by *² are the bolts/nuts with friction coefficient stabilizer. In removal, ensure there is no damage, clean dust and soiling from the bearing and thread surfaces, and tighten them to the specified torque.

Pre-removal operation

- Height Sensor and Control Link Disconnection (Refer to GROUP 54A, Headlamp Automatic Leveling System .)

Post-installation operation

- Height Sensor and Control Link Connection (Refer to GROUP 54A, Headlamp Automatic Leveling System .)
- Wheel alignment check and adjustment (Refer to .)



AC602652AF

<<A>>

>>A<<

Control link and upper arm removal

1. Control link
2. Upper arm

Lower arm removal steps

3. Stabilizer link connection
4. Lower arm and trailing arm connection

Lower arm removal steps

5. Shock absorber connection
6. Coil spring
7. Coil spring upper pad
8. Coil spring lower pad
9. Lower arm

REAR SUSPENSION REAR SUSPENSION CROSSMEMBER

REAR SUSPENSION CROSSMEMBER

REMOVAL AND INSTALLATION

M1341006800413

⚠ CAUTION

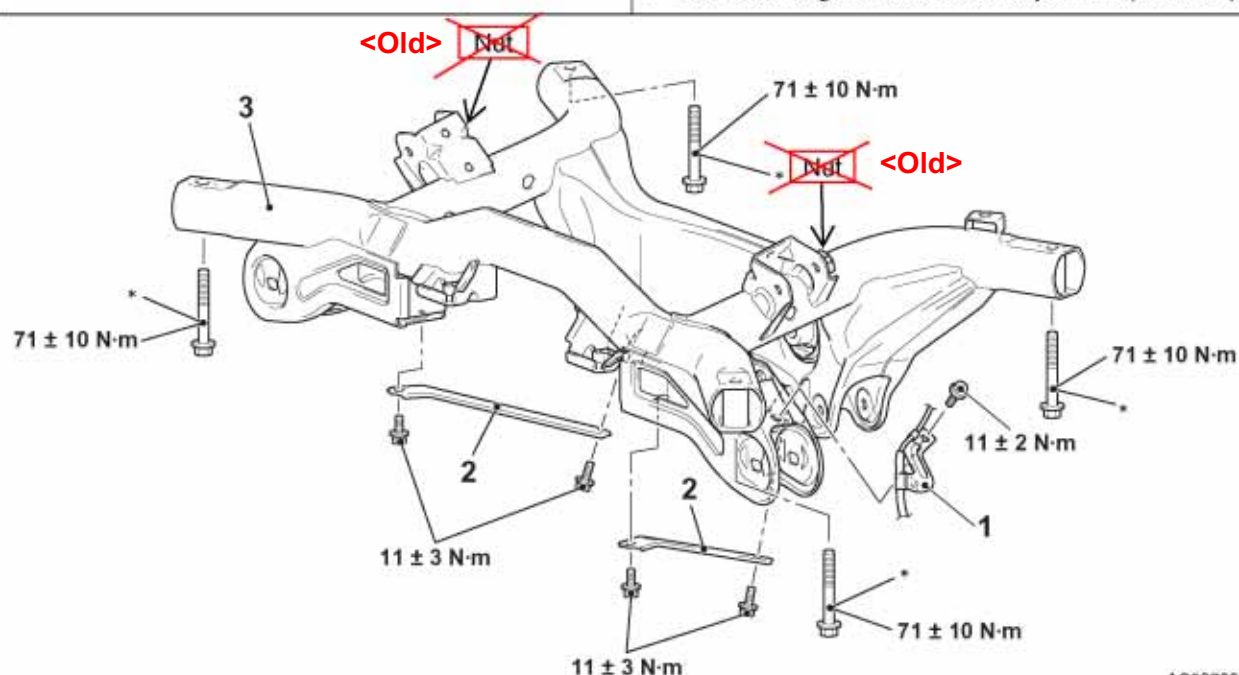
- As for vehicles with the headlamp auto levelling system, disconnect the height sensor from the lower arm before operation to prevent any damage to the height sensor (Refer to GROUP 54A Headlamp Automatic Leveling System – Height Sensor).
- The part indicated by * are the bolt with friction coefficient stabilizer. In removal, ensure there is no damage, crean dust and soiling from the bearing and thread surfaces, and tighten them to the specified torque.

Pre-removal operation

- Control link arm removal (Refer to .)
- Upper arm removal (Refer to .)
- Rear suspension stabilizer bar removal (Refer to .)
- Centre exhaust pipe removal (Refer to GROUP 15 – Exhaust Pipe and Muffler).
- Driveshaft removal (Refer to GROUP 27B – Driveshaft assembly .)
- Rear differential assembly removal (Refer to GROUP27B – Differential carrier assembly.)

Post-installation operation

- Rear differential assembly installation (Refer to GROUP27B – Differential carrier assembly.)
- Driveshaft installation (Refer to GROUP 27B – Driveshaft assembly .)
- Centre exhaust pipe installation (Refer to GROUP 15 – Exhaust Pipe and Muffler).
- Rear suspension stabilizer bar installation (Refer to .)
- Upper arm installation (Refer to .)
- Control link installation (Refer to .)
- Rear wheel alignment check and adjustment (Refer to .)



AC507399AH

Removal steps

1. Rear ABS sensor clamp

Removal steps (Continued)

2. Rear suspension crossmember stay
3. Rear suspension crossmember

REAR SUSPENSION CONTROL LINK, UPPER ARM AND LOWER ARM

CONTROL LINK, UPPER ARM AND LOWER ARM REMOVAL AND INSTALLATION

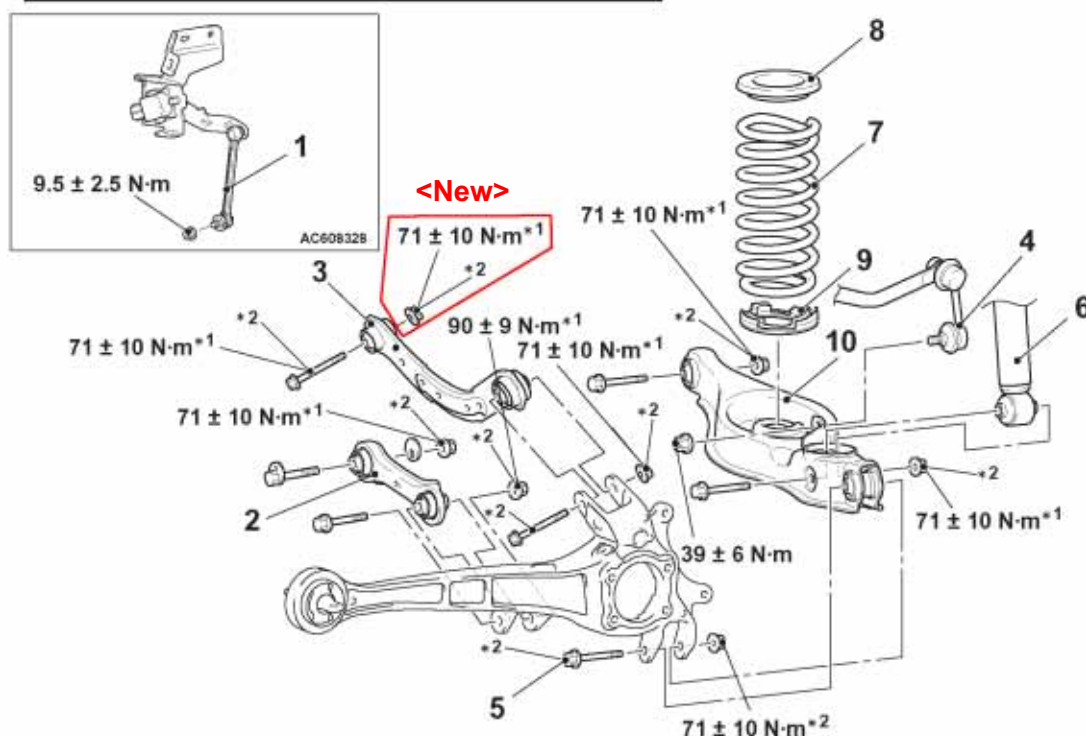
M1341004800503

⚠ CAUTION

- The parts indicated by *¹ should be temporarily tightened, and then fully tightened with the vehicle standing on the earth and the curb weight condition.
- The parts indicated by *² are the bolts/nuts with friction coefficient stabilizer. In removal, ensure there is no damage, clean dust and soiling from the bearing and thread surfaces, and tighten them to the specified torque.

Post-installation operation

- Using your fingers, press the Ball Joint Dust Cover to check for a crack or damage.
- Wheel alignment check and adjustment (Refer to .)
- Check the beam direction of the headlamp (Low beam) (Refer to GROUP 54A – Headlamp Aiming).



Control link and upper arm removal

1. Rear height sensor to control link connection <Vehicles with headlamp automatic levelling system>
2. Control link
3. Upper arm

<<A>>

>>A<<

Lower arm removal steps

4. Stabilizer link connection
5. Lower arm and trailing arm connection
6. Shock absorber connection
7. Coil spring
8. Coil spring upper pad
9. Coil spring lower pad
10. Lower arm

AC602652AG

REAR SUSPENSION REAR SUSPENSION CROSSMEMBER

REAR SUSPENSION CROSSMEMBER

REMOVAL AND INSTALLATION

M1341006800510

CAUTION

- The part indicated by * are the bolt with friction coefficient stabilizer. In removal, ensure there is no damage, clean dust and soiling from the bearing and thread surfaces, and tighten them to the specified torque.

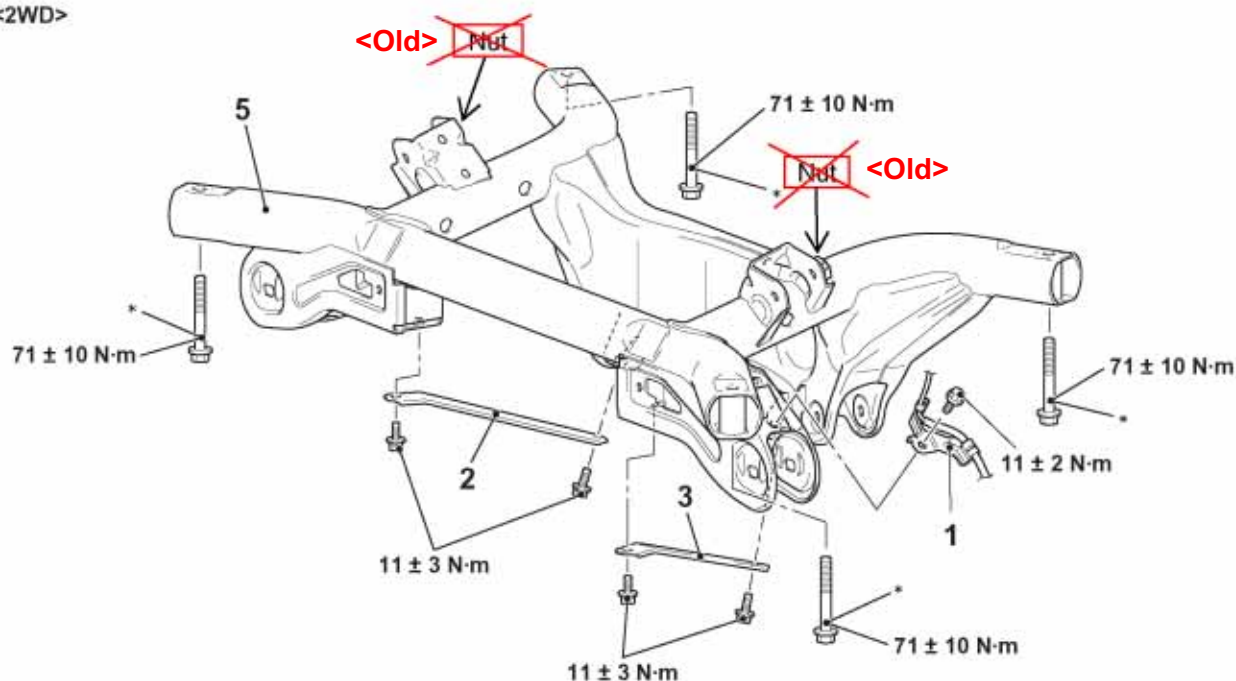
Pre-removal operation

- Rear height sensor to control link disconnection (Refer to GROUP54A Headlamp automatic levelling system – Height sensor.)
- Additional tank removal <2200>
- Control link arm removal (Refer to .)
- Upper arm removal (Refer to .)
- Rear suspension stabilizer bar removal (Refer to .)
- Centre exhaust pipe removal (Refer to GROUP 15 – Exhaust Pipe and Muffler .).
- Driveshaft removal (Refer to GROUP 27B – Driveshaft assembly .)
- Rear differential assembly removal (Refer to GROUP27B – Differential carrier assembly.)

Post-installation operation

- Rear differential assembly installation (Refer to GROUP27B – Differential carrier assembly.)
- Driveshaft installation (Refer to GROUP 27B – Driveshaft assembly .)
- Centre exhaust pipe installation (Refer to GROUP 15 – Exhaust Pipe and Muffler .).
- Rear suspension stabilizer bar installation (Refer to .)
- Upper arm installation (Refer to .)
- Control link installation (Refer to .)
- Rear height sensor to control link connection (Refer to GROUP54A Headlamp automatic levelling system – Height sensor.)
- Rear wheel alignment check and adjustment (Refer to .)
- Additional tank installation <2200>
- Check the beam direction of the headlamp (Low beam) (Refer to GROUP 54A – Headlamp Aiming).

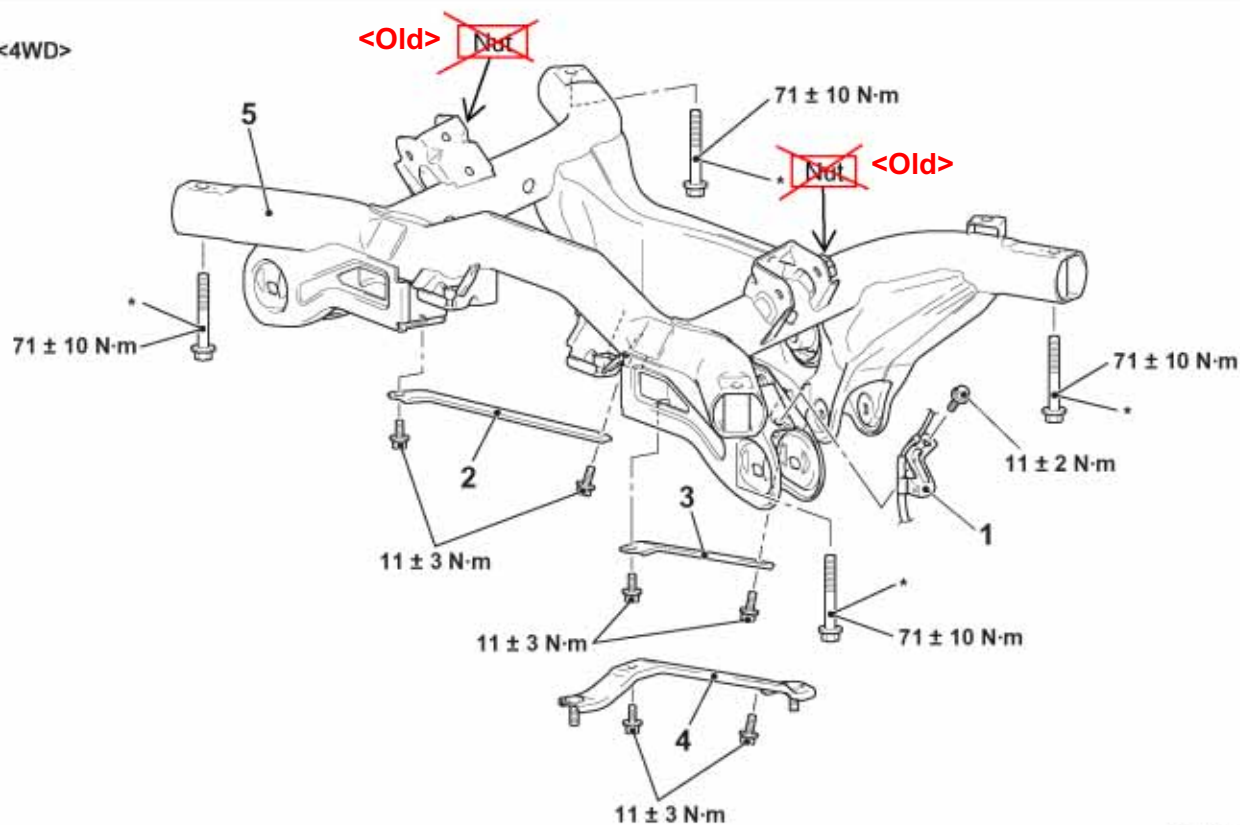
<2WD>



AC608485AG

REAR SUSPENSION REAR SUSPENSION CROSSMEMBER

<4WD>



AC612225AC

Removal steps

1. Rear ABS sensor clamp
2. Rear suspension crossmember stay (RH)
3. Rear suspension crossmember stay (LH) <except 2200>

Removal steps (Continued)

4. Rear suspension crossmember stay (LH) <2200>
5. Rear suspension crossmember