

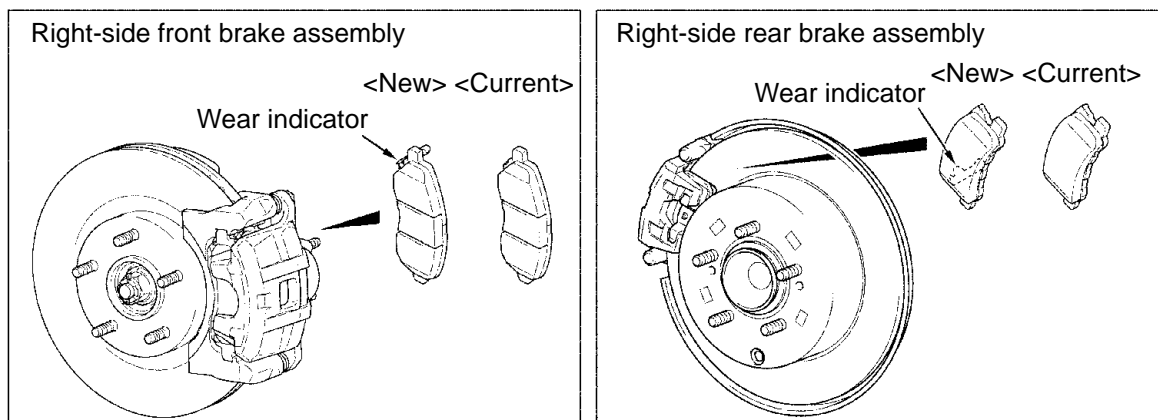
PURPOSE : INFORMATION	ISSUE NO. : MSB-09E35-003	DATE : 2009-09-05
SUBJECT : BRAKE PAD WITH WEAR INDICATOR	<MODEL> <M/Y>	
GROUP : BASIC BRAKE SYSTEM	(EUR/RUSSIA) See following 2. Applicable Manuals table.	

## 1. Description:

To conform with the legal requirements of EU, the brake pads with wear indicator are installed to the right-side disc brakes for front and rear wheels (except Brembo brakes). This Service Bulletin contains the detailed information.

### Note:

Regarding the service part brake pads, both for the left-side brake and right-side brake have the wear indicator.



## 2. Applicable Manuals:

See Attached sheets 1 (1/3) to 1 (3/3).

There may be some attached sheets not included in this Service Bulletin because they are not applicable to your market. Their sheet numbers are not listed in the above table.

## 3. Effective Date:

From early November, 2009

## 4. Details:

See Attached sheets 5-1 to 5-4, 10-1 to 10-6, and 12.

&lt;EUR&gt;

Manual/Model	<M/Y>	Pub. No.	Title (Info-ID)	Attached Sheet
2010 OUTLANDER Workshop Manual (GS45X)(CW0W)	10	CGXE10E1-CD (English)	Brake Pad Replacement (M351-01-740-57300-01)	Attached sheet 5-1
		CGXF10E1-CD (French)	Front Disc Brake Assembly Disassembly and Reassembly <Standard> (M351-00-622-00900-01)	Attached sheet 5-2
		CGXG10E1-CD (German)	Front Disc Brake Assembly Disassembly and Reassembly <Option> (M351-00-622-01000-01)	Attached sheet 5-3
		CGXS10E1-CD (Spanish)	Rear Disc Brake Assembly Disassembly and Reassembly (M351-00-721-44100-01)	Attached sheet 5-4
2010 LANCER Workshop Manual (GS41)(CY0A)	10	CG1E10E1-CD (English)	Brake Pad Replacement <Except 2000-turbo> (M351-01-740-55100-01)	Attached sheet 10-1
		CG1F10E1-CD (French)	Brake Pad Replacement <2000-turbo> (M351-01-740-56200-01)	Attached sheet 10-2
		CG1G10E1-CD (German)	Front Disc Brake Assembly Disassembly and Reassembly <Except 2000-turbo> (M351-00-621-98700-01)	Attached sheet 10-3
		CG1S10E1-CD (Spanish)	Front Disc Brake Assembly Disassembly and Reassembly <2000-turbo> (M351-00-621-99800-01)	Attached sheet 10-4
		CG1I10E1-CD (Italian)	Rear Disc Brake Assembly Disassembly and Reassembly <Except 2000-turbo> (M351-00-721-41800-01)	Attached sheet 10-5
			Rear Disc Brake Assembly Disassembly and Reassembly <2000-turbo> (M351-00-721-42900-01)	Attached sheet 10-6

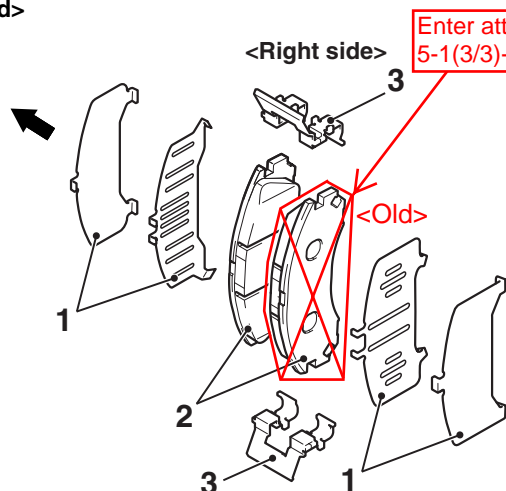
Manual/Model	<M/Y>	Pub. No.	Title (Info-ID)	Attached Sheet
2010 LANCER SPORTBACK Workshop Manual (GS44S)(CX0A)	10	CG4E10E1-CD (English) CG4F10E1-CD (French) CG4G10E1-CD (German) CG4S10E1-CD (Spanish) CG4I10E1-CD (Italian)	Brake Pad Replacement <Except 2000-turbo> (M351-01-740-55100-01)	Attached sheet 10-1
			Brake Pad Replacement <2000-turbo> (M351-01-740-56200-01)	Attached sheet 10-2
			Front Disc Brake Assembly Disassembly and Reassembly <Except 2000-turbo> (M351-00-621-98700-01)	Attached sheet 10-3
			Front Disc Brake Assembly Disassembly and Reassembly <2000-turbo> (M351-00-621-99800-01)	Attached sheet 10-4
			Rear Disc Brake Assembly Disassembly and Reassembly <Except 2000-turbo> (M351-00-721-41800-01)	Attached sheet 10-5
			Rear Disc Brake Assembly Disassembly and Reassembly <2000-turbo> (M351-00-721-42900-01)	Attached sheet 10-6
2010 LANCER EVOLUTION Workshop Manual (GS41-EVO)(CZ3A)	10	CGEE10E1-CD (English) CGEF10E1-CD (French) CGEG10E1-CD (German) CGES10E1-CD (Spanish) CGEI10E1-CD (Italian)	Rear Disc Brake Assembly Disassembly and Reassembly <15-inch rear disc brake> (M351-00-720-85701-01)	Attached sheet 12

## &lt;RUSSIA&gt;

Underneath Manual/Model	<M/Y>	Underneath Pub. No.	Title (Info-ID)	Attached Sheet
2010 OUTLANDER Workshop Manual (GS45X)(CW0W)	10	N/A	Brake Pad Replacement (M351-01-740-57300-01)	Attached sheet 5-1
			Front Disc Brake Assembly Disassembly and Reassembly <Standard> (M351-00-622-00900-01)	Attached sheet 5-2
			Front Disc Brake Assembly Disassembly and Reassembly <Option> (M351-00-622-01000-01)	Attached sheet 5-3
			Rear Disc Brake Assembly Disassembly and Reassembly (M351-00-721-44100-01)	Attached sheet 5-4

Underneath Manual/Model	<M/Y>	Underneath Pub. No.	Title (Info-ID)	Attached Sheet
2010 LANCER Workshop Manual (GS41)(CY0A)	10	N/A	Brake Pad Replacement <Except 2000-turbo> (M351-01-740-55100-01)	Attached sheet 10-1
			Brake Pad Replacement <2000-turbo> (M351-01-740-56200-01)	Attached sheet 10-2
			Front Disc Brake Assembly Disassembly and Reassembly <Except 2000-turbo> (M351-00-621-98700-01)	Attached sheet 10-3
			Front Disc Brake Assembly Disassembly and Reassembly <2000-turbo> (M351-00-621-99800-01)	Attached sheet 10-4
			Rear Disc Brake Assembly Disassembly and Reassembly <Except 2000-turbo> (M351-00-721-41800-01)	Attached sheet 10-5
			Rear Disc Brake Assembly Disassembly and Reassembly <2000-turbo> (M351-00-721-42900-01)	Attached sheet 10-6
2010 LANCER SPORTBACK Workshop Manual (GS44S)(CX0A)	10	N/A	Brake Pad Replacement <Except 2000-turbo> (M351-01-740-55100-01)	Attached sheet 10-1
			Brake Pad Replacement <2000-turbo> (M351-01-740-56200-01)	Attached sheet 10-2
			Front Disc Brake Assembly Disassembly and Reassembly <Except 2000-turbo> (M351-00-621-98700-01)	Attached sheet 10-3
			Front Disc Brake Assembly Disassembly and Reassembly <2000-turbo> (M351-00-621-99800-01)	Attached sheet 10-4
			Rear Disc Brake Assembly Disassembly and Reassembly <Except 2000-turbo> (M351-00-721-41800-01)	Attached sheet 10-5
			Rear Disc Brake Assembly Disassembly and Reassembly <2000-turbo> (M351-00-721-42900-01)	Attached sheet 10-6
2010 LANCER EVOLUTION Workshop Manual (GS41-EVO)(CZ3A)	10	N/A	Rear Disc Brake Assembly Disassembly and Reassembly <15-inch rear disc brake> (M351-00-720-85701-01)	Attached sheet 12

## &lt;Standard&gt;

Vehicle  
out side

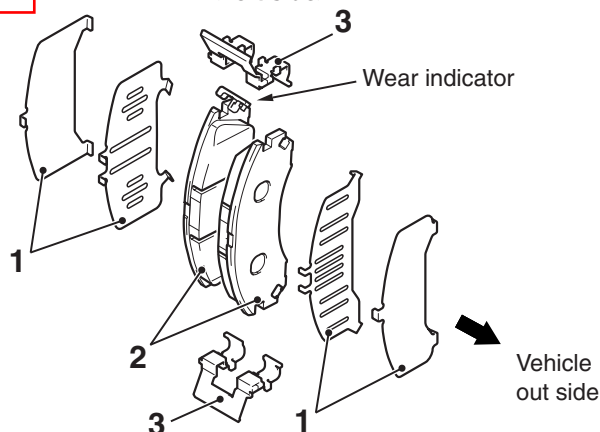
&lt;Right side&gt;

Enter attached sheet  
5-1(3/3)-A

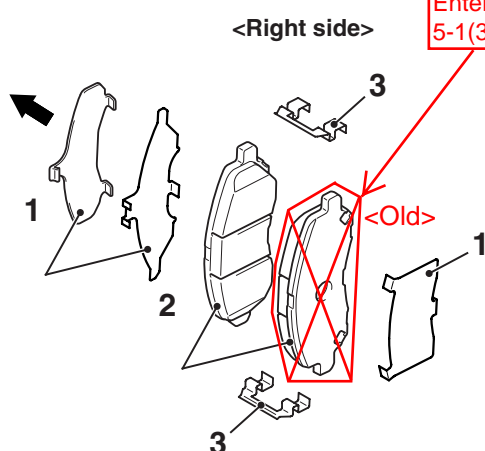
&lt;Old&gt;

&lt;Left side&gt;

Wear indicator

Vehicle  
out side

## &lt;Option&gt;

Vehicle  
out side

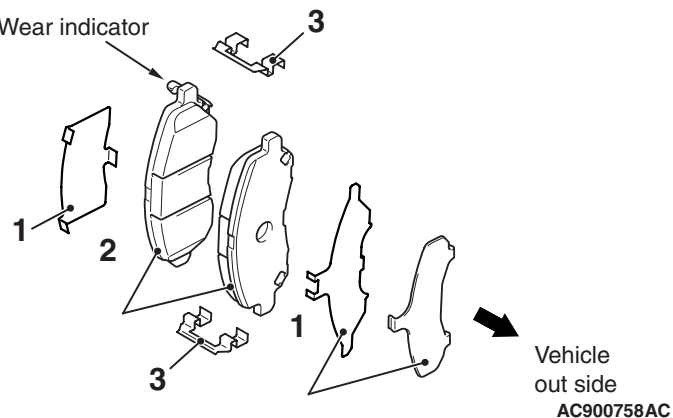
&lt;Right side&gt;

Enter attached sheet  
5-1(3/3)-B

&lt;Old&gt;

&lt;Left side&gt;

Wear indicator

Vehicle  
out side

AC900758AC

2. Remove the following parts from the caliper body.

- (1) Shim
- (2) Brake pad assembly
- (3) Clip

**NOTE:**

- The brake pad assembly with wear indicator is installed only to the inner side of the brake disc of the left-side brake at factory.
- As for the accessory pad set, the brake pad with wear indicator has been established to the inner side of the brake disc on both right side brake and left side brake.

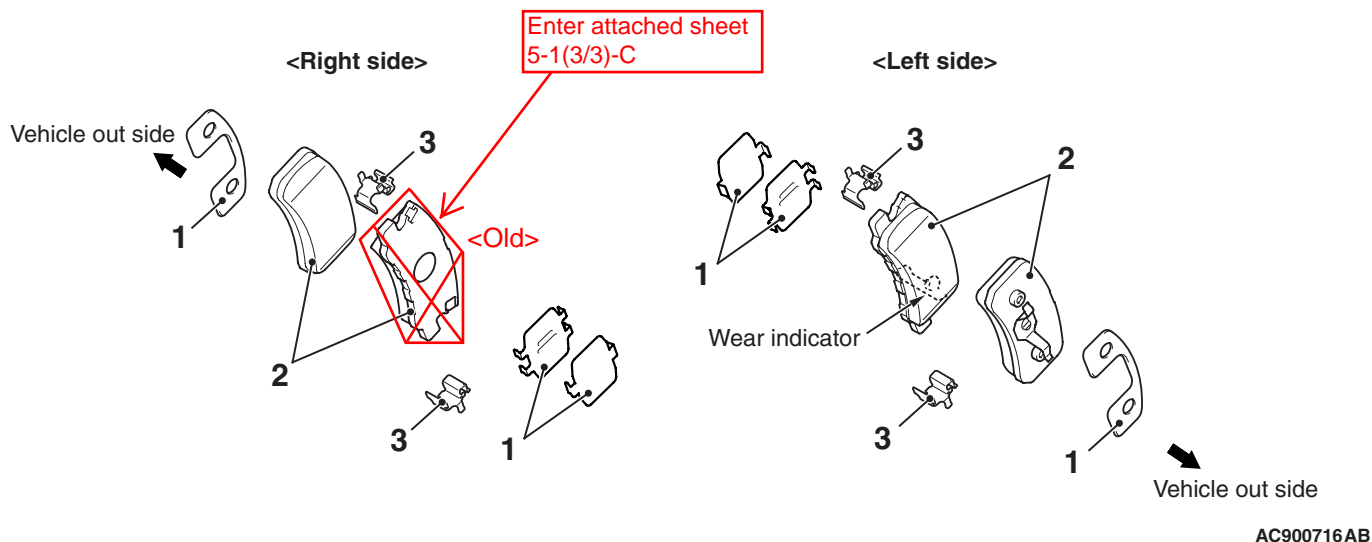
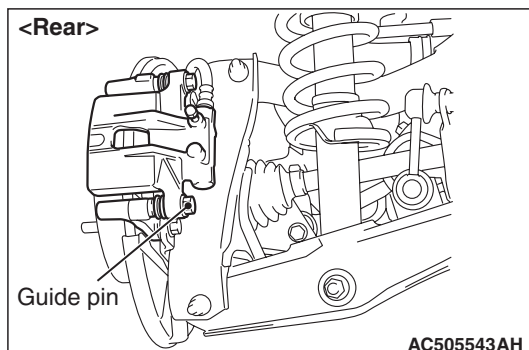
&lt;Deleted&gt;

## &lt;REAR&gt;

**CAUTION**

When replacing, replace both brake pads (right and left) as a set.

1. Remove the parts indicated in the figure, swivel the caliper body upward and retain it with a wire or similar tool.



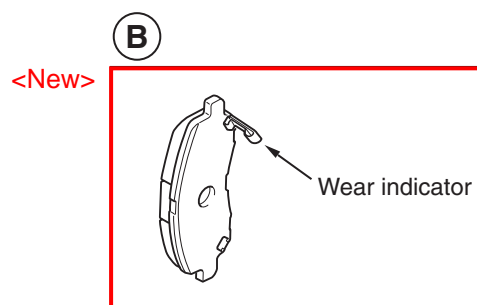
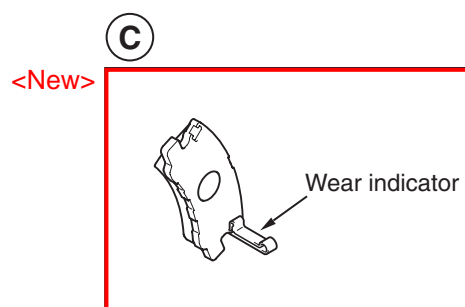
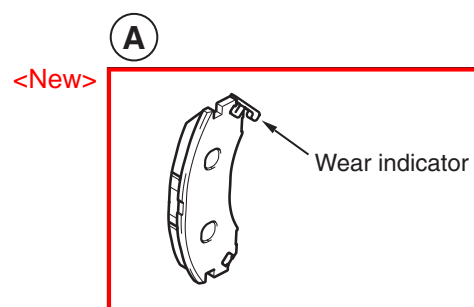
2. Remove the following parts from the caliper body.

- (1) Shim
- (2) Brake pad assembly
- (3) Clip

**NOTE:**

- The brake pad assembly with wear indicator is installed only to the inner side of the brake disc of the left-side brake at factory.
- As for the accessory pad set, the brake pad with wear indicator has been established to the inner side of the brake disc on both right side brake and left side brake.

&lt;Deleted&gt;



**Disassembly steps**

1. Bleeder cap
2. Bleeder
3. Guide pin
4. Lock pin
5. Bushing
6. Caliper support  
(including brake pad, clip, and shim)
7. Shim
8. Brake pad assembly
9. Clip
10. Pin boot
11. Boot ring
12. Piston boot
13. Piston

**Disassembly steps**

&lt;&lt;B&gt;&gt;

14. Piston seal
15. Caliper body

**NOTE:**

&lt;Deleted&gt;

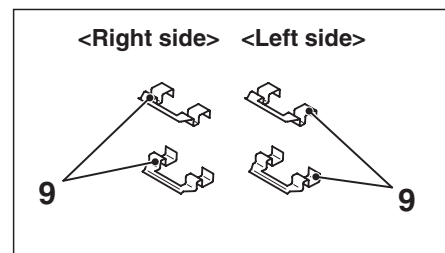
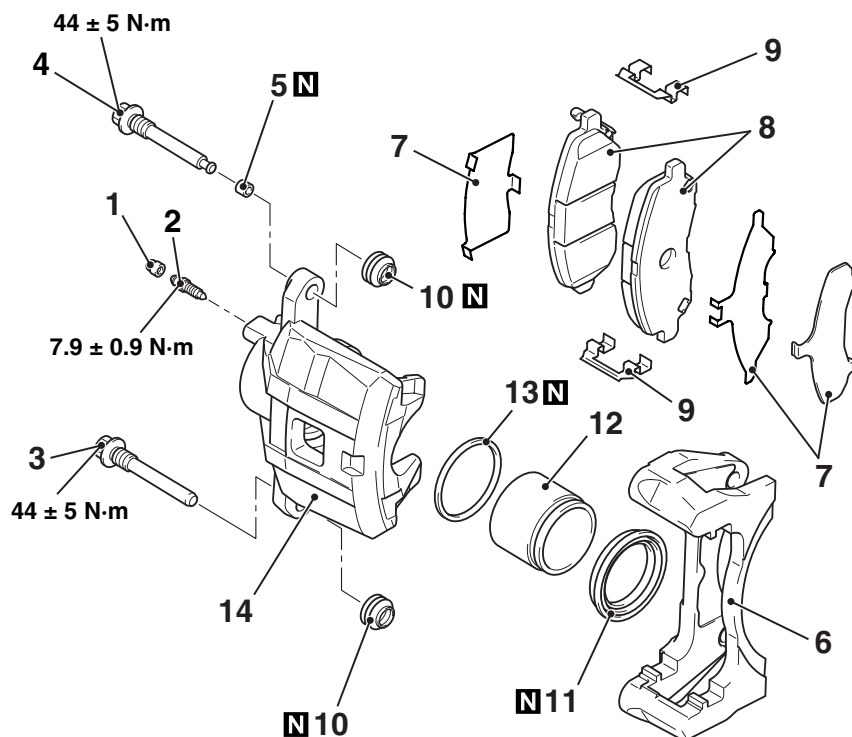
- ~~• The brake pad assembly with wear indicator is installed only to the inner side of the brake disc of the left-side brake at factory.~~
- ~~• As for the accessory pad set, the brake pad with wear indicator has been established to the inner side of the brake disc on both right side brake and left side brake.~~
- Install the brake pad assembly (with wear indicator) to the inner side of the brake disc, making sure that the wear indicator is located on the top.

&lt;&lt;A&gt;&gt;

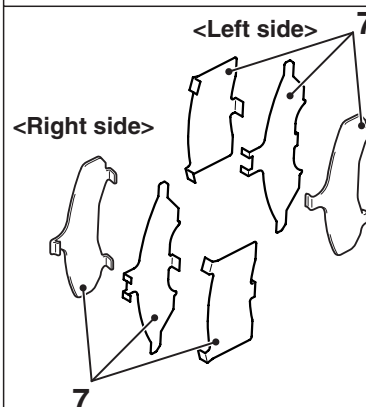
&lt;&lt;A&gt;&gt;



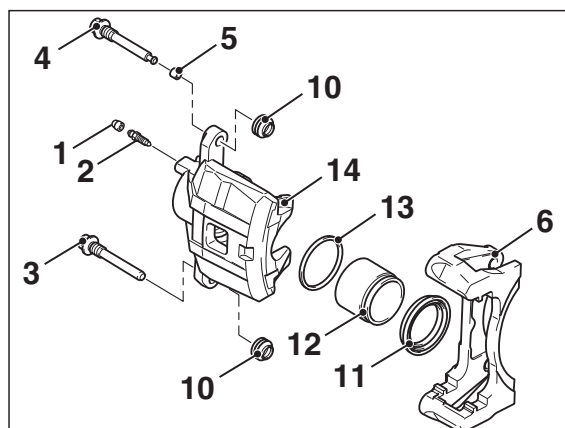
## DISASSEMBLY AND REASSEMBLY <OPTION>



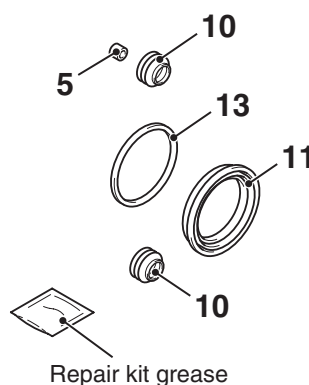
Front brake clip set



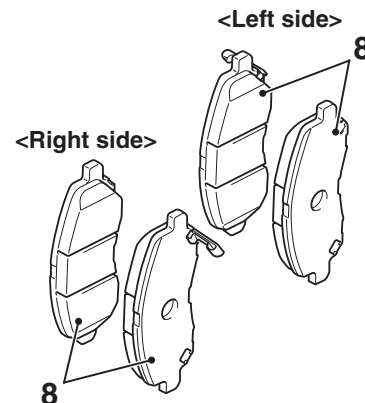
Front brake shim set



Front brake caliper kit



Front brake caliper seal kit



Front brake pad set

AC711224AC

### Disassembly steps

1. Bleeder cap
2. Bleeder
3. Guide pin
4. Lock pin
5. Bushing
6. Caliper support  
(including brake pad assembly,  
clip, and shim)
7. Shim
8. Brake pad assembly
9. Clip
10. Pin boot
11. Piston boot

&lt;&lt;A&gt;&gt;

### Disassembly steps

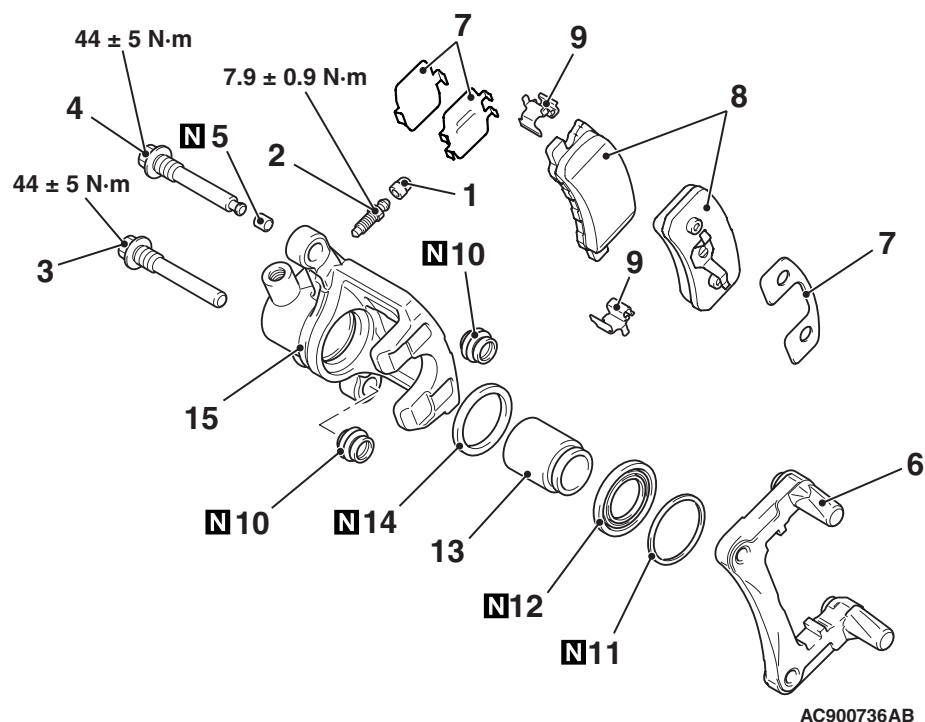
- <<A>> 12. Piston
- <<B>> 13. Piston seal
14. Caliper body

### NOTE:

&lt;Deleted&gt;

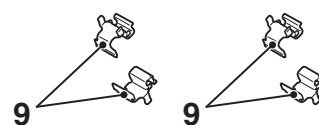
- As for the pad set, the brake pads for both the right wheels and the left wheels have the wear indicator.
- Install the brake pad & wear indicator assembly to the inner side of the brake disc, making sure that the wear indicator is located on the top.

## DISASSEMBLY AND REASSEMBLY



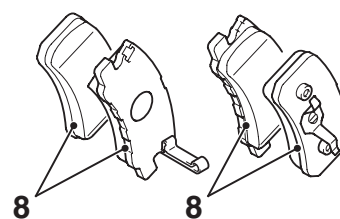
AC900736AB

&lt;Right side&gt; &lt;Left side&gt;

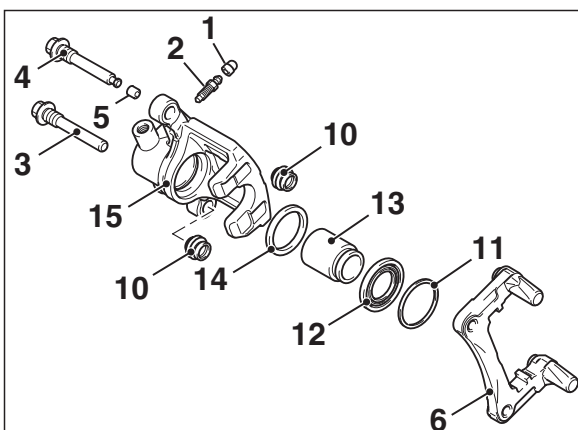


Rear brake clip set

&lt;Right side&gt; &lt;Left side&gt;

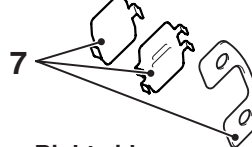


Rear brake pad set

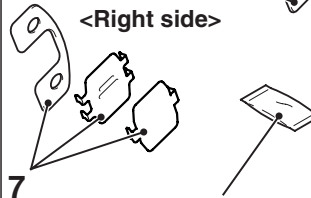


Rear brake caliper kit

&lt;Left side&gt;



&lt;Right side&gt;



Repair kit grease

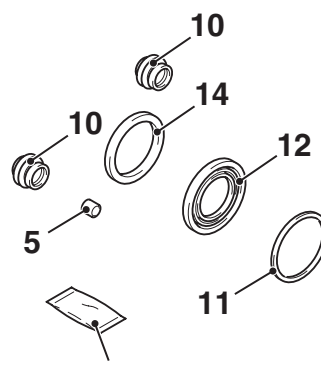
Rear brake shim set

10

14

12

11



Repair kit grease

Rear brake caliper seal kit

### Disassembly steps

1. Bleeder cap
2. Bleeder
3. Guide pin
4. Lock pin
5. Bushing
6. Caliper support
7. Shim
8. Brake pad assembly
9. Clip
10. Pin boot
11. Boot ring
12. Piston boot
13. Piston
14. Piston seal
15. Caliper body

&lt;&lt;A&gt;&gt;

&lt;&lt;A&gt;&gt;

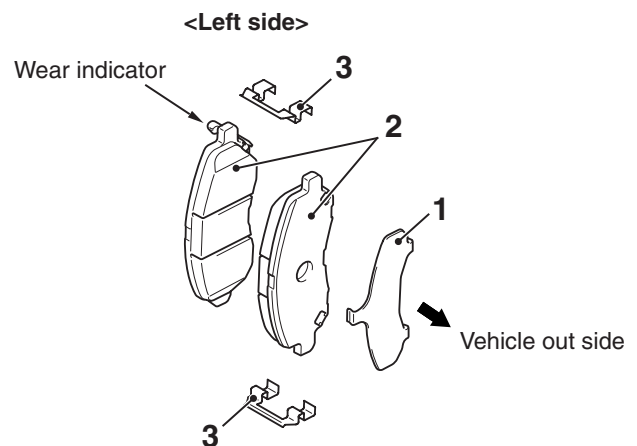
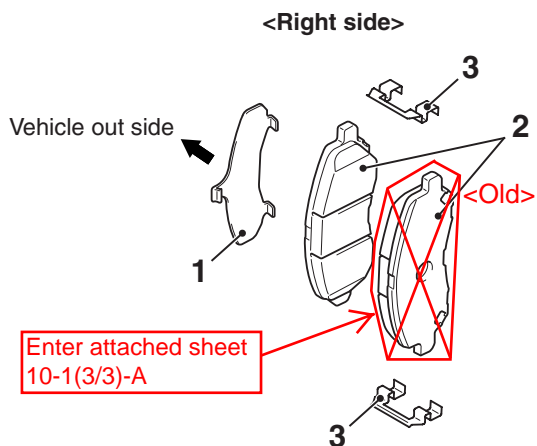
&lt;&lt;B&gt;&gt;

### NOTE:

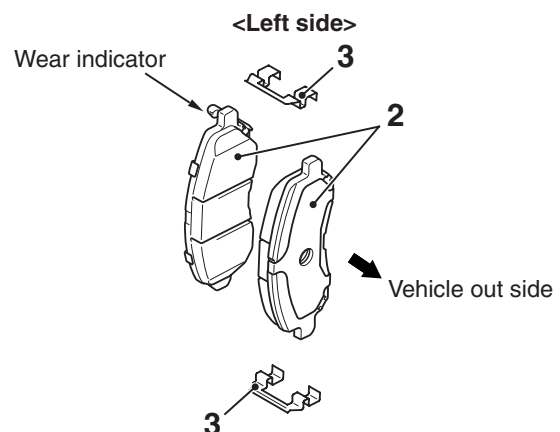
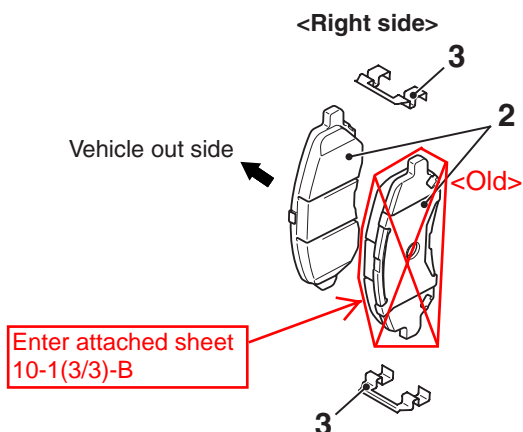
&lt;Deleted&gt;

- ~~The brake pad assembly with wear indicator is installed only to the inner side of the brake disc of the left-side brake at factory.~~
- ~~As for the accessory pad set, the brake pad with wear indicator has been established to the inner side of the brake disc on both right side brake and left side brake.~~
- Install the brake pad assembly (with wear indicator) to the inner side of the brake disc, making sure that the wear indicator is located on the bottom.

## &lt;Standard brake pads&gt;



## &lt;Low steel brake pads&gt;



AC801728AB

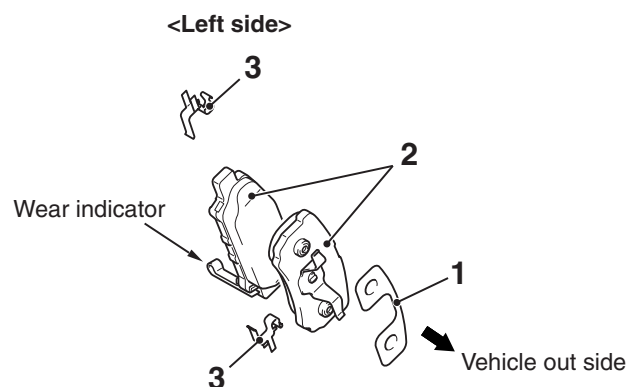
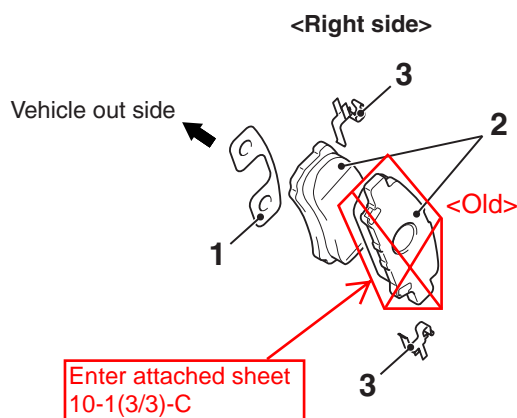
2. Remove the following parts from the caliper body.

- (1) Shim
- (2) Brake pad assembly
- (3) Clip

**NOTE:**

- The brake pad assembly with wear indicator is installed only to the inner side of the brake disc of the left-side brake at factory.
- As for the accessory pad set, the brake pad with wear indicator has been established to the inner side of the brake disc on both right side brake and left side brake.

&lt;Deleted&gt;



AC900705AB

2. Remove the following parts from the caliper body.

- (1) Shim
- (2) Brake pad assembly
- (3) Clip

**NOTE:**

- The brake pad assembly with wear indicator is installed only to the inner side of the brake disc of the left-side brake at factory.
- As for the accessory pad set, the brake pad with wear indicator has been established to the inner side of the brake disc on both right side brake and left side brake.

**CAUTION**

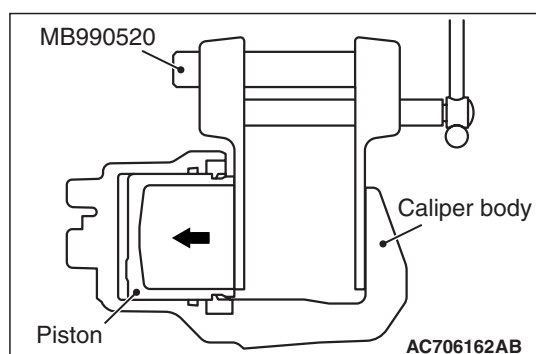
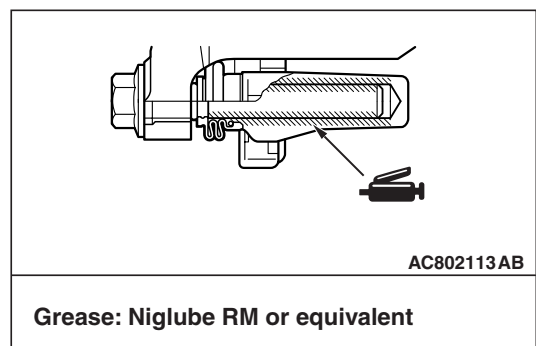
&lt;Deleted&gt;

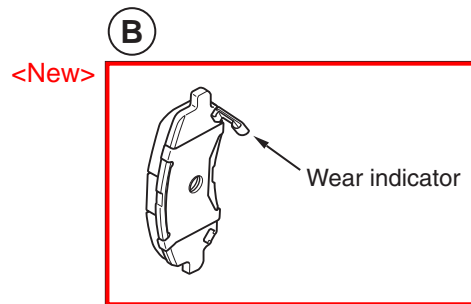
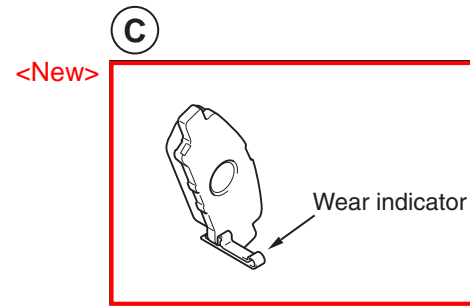
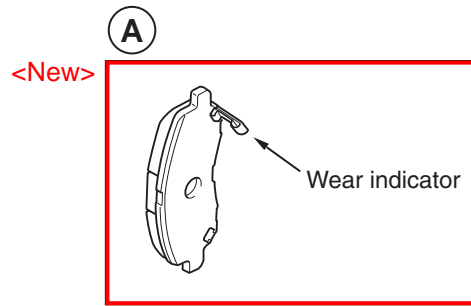
**Keep grease or other soiling off the pad and brake disc friction surfaces.**

3. Clean the piston part, and press the piston into the cylinder using the special tool piston expander (MB990520).
4. Assemble the shim, brake pad assembly and clip to the caliper support, and tighten the guide pin to the specified torque.

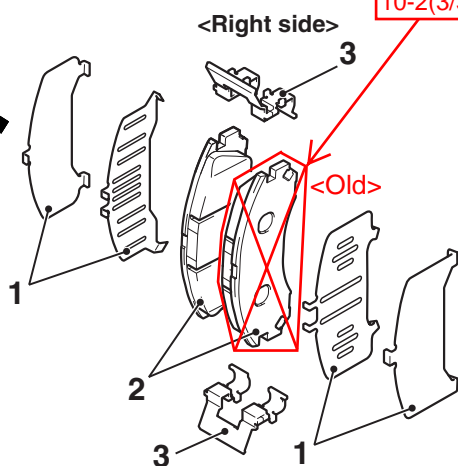
**Tightening torque:  $44 \pm 5$  N·m**

**NOTE:** Install the brake pad assembly (with wear indicator) to the inner side of the brake disc, making sure that the wear indicator is located on the bottom.

**LUBRICATION POINT**

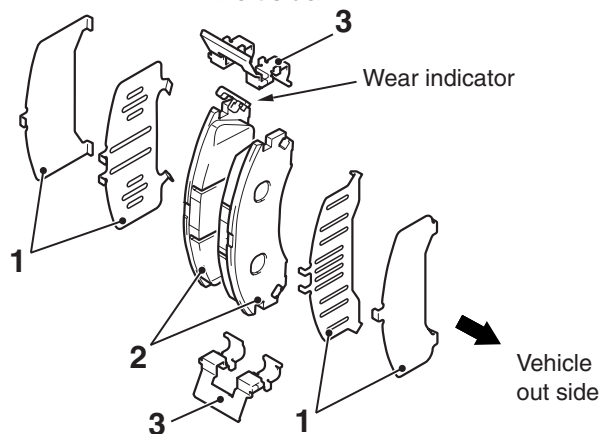


## &lt;Vehicles for Europe&gt;

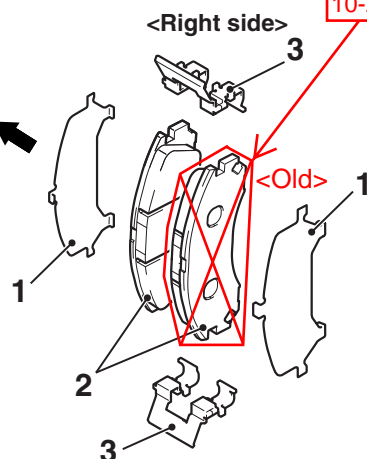
Vehicle  
out sideEnter attached sheet  
10-2(3/3)-A

## &lt;Left side&gt;

Wear indicator

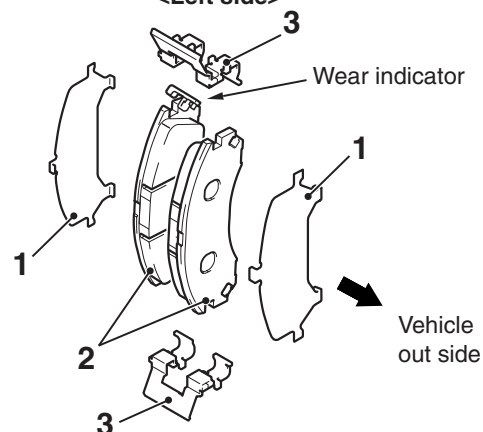


## &lt;Vehicles for Russia&gt;

Vehicle  
out sideEnter attached sheet  
10-2(3/3)-B

## &lt;Left side&gt;

Wear indicator



AC900713AB

2. Remove the following parts from the caliper body.

- (1) Shim
- (2) Brake pad assembly
- (3) Clip

**NOTE:**

- The brake pad assembly with wear indicator is installed only to the inner side of the brake disc of the left-side brake at factory.
- As for the accessory pad set, the brake pad with wear indicator has been established to the inner side of the brake disc on both right side brake and left side brake.

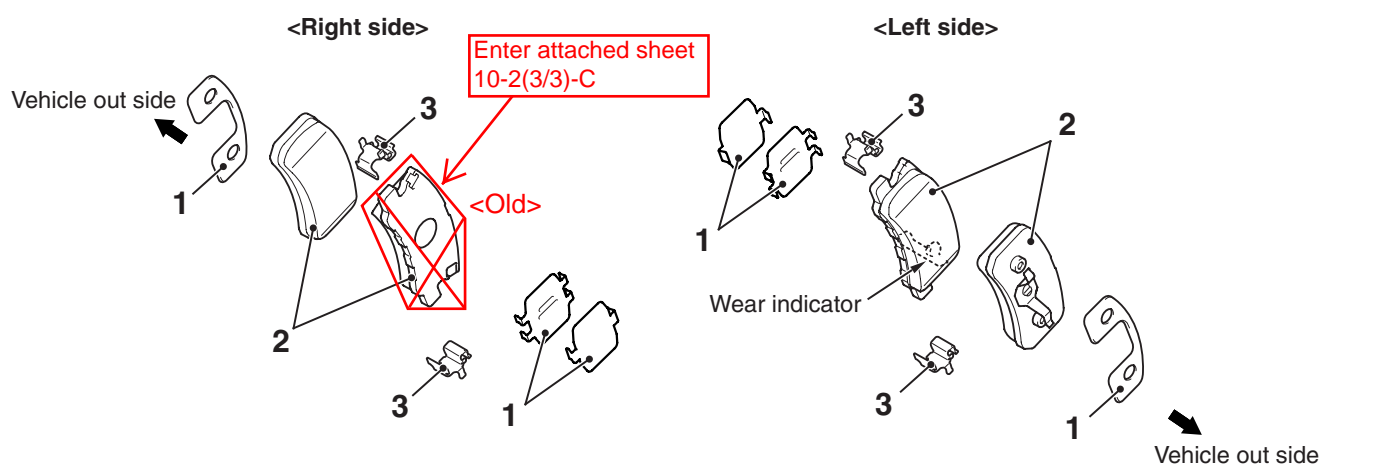
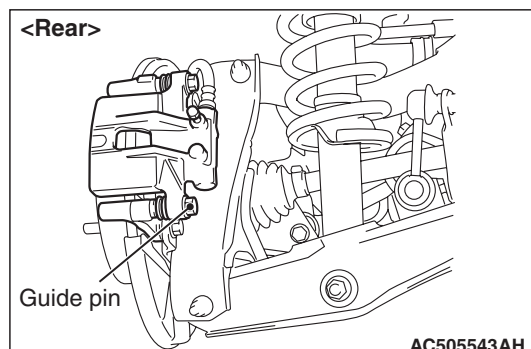
&lt;Deleted&gt;

## &lt;REAR&gt;

**CAUTION**

When replacing, replace both brake pads (right and left) as a set.

1. Remove the parts indicated in the figure, swivel the caliper body upward and retain it with a wire or similar tool.



AC900716AB

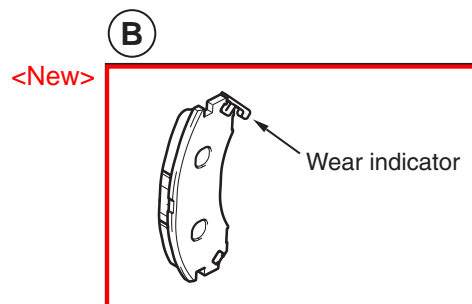
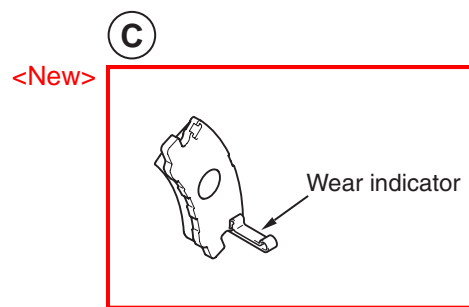
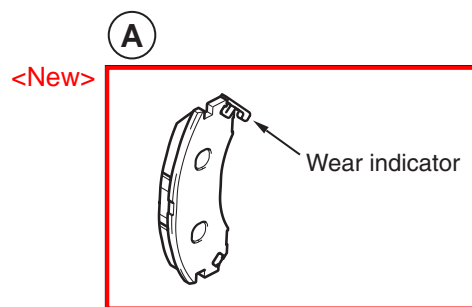
2. Remove the following parts from the caliper body.

- (1) Shim
- (2) Brake pad assembly
- (3) Clip

**NOTE:**

- The brake pad assembly with wear indicator is installed only to the inner side of the brake disc of the left-side brake at factory.
- As for the accessory pad set, the brake pad with wear indicator has been established to the inner side of the brake disc on both right side brake and left side brake.

&lt;Deleted&gt;





**Disassembly steps**

7. Shim
8. Brake pad assembly
9. Clip
10. Pin boot
11. Piston boot
12. Piston
13. Piston seal
14. Caliper body

&lt;&lt;A&gt;&gt;

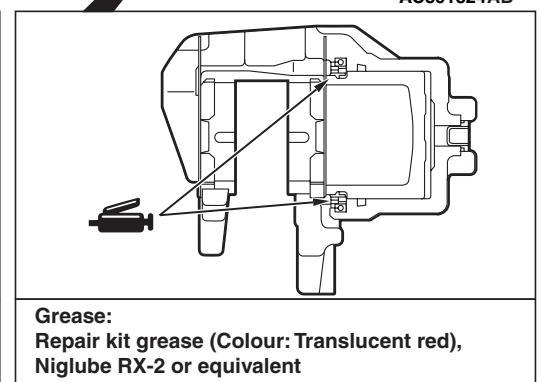
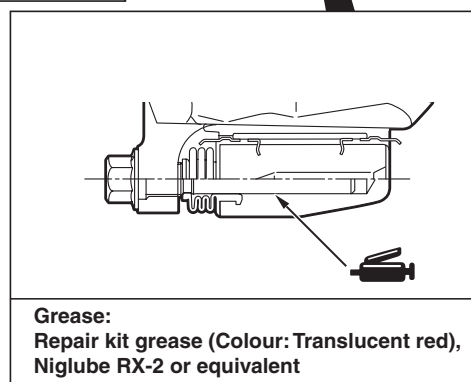
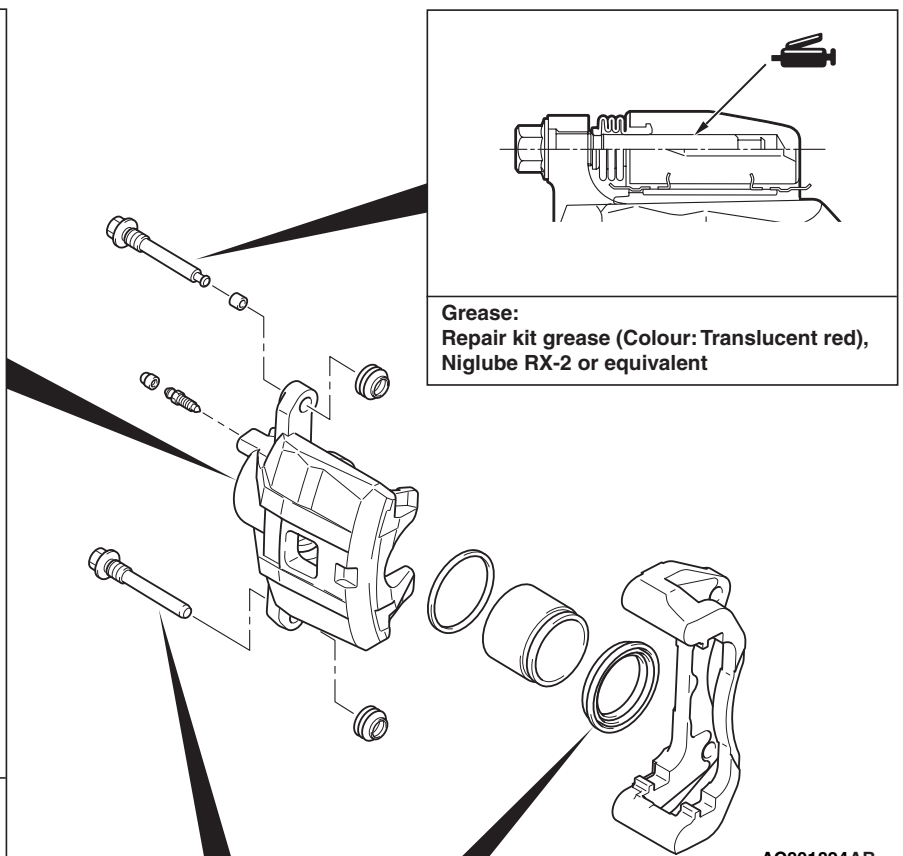
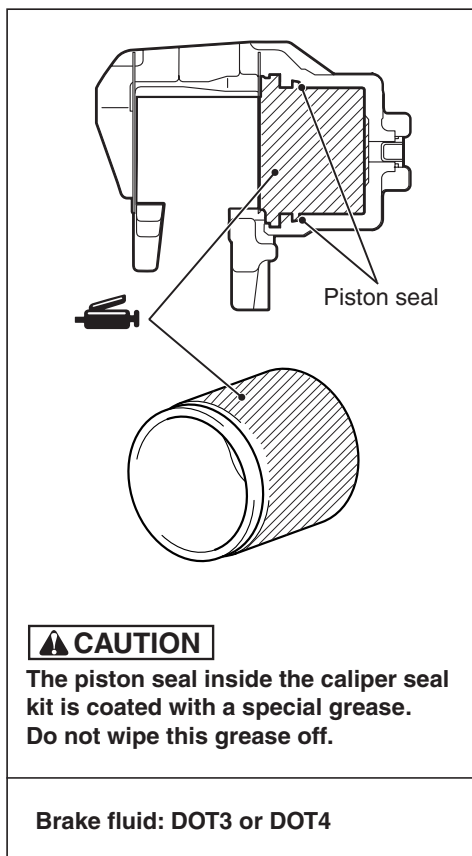
&lt;&lt;A&gt;&gt;

&lt;&lt;B&gt;&gt;

**NOTE:**

&lt;Deleted&gt;

- ~~The brake pad assembly with wear indicator is installed only to the inner side of the brake disc of the left-side brake at factory.~~
- ~~As for the accessory pad set, the brake pad with wear indicator has been established to the inner side of the brake disc on both right side brake and left side brake.~~
- Install the brake pad assembly (with wear indicator) to the inner side of the brake disc, making sure that the wear indicator is located on the top.

**LUBRICATION POINTS**

**Disassembly steps**

6. Caliper support  
(including brake pad, clip, and shim)
7. Shim
8. Brake pad assembly
9. Clip
10. Pin boot
11. Boot ring
12. Piston boot
13. Piston
14. Piston seal
15. Caliper body

&lt;&lt;A&gt;&gt;

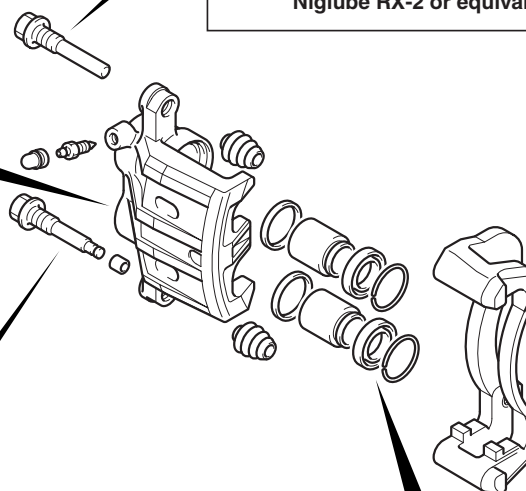
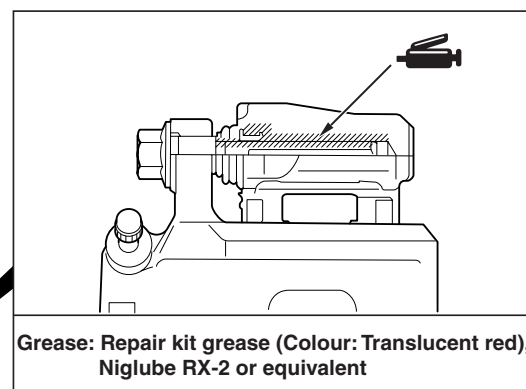
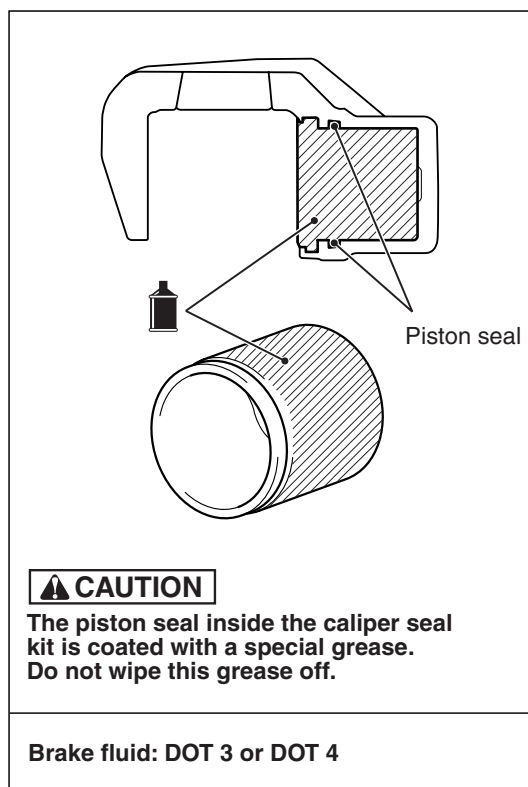
&lt;&lt;A&gt;&gt;

&lt;&lt;B&gt;&gt;

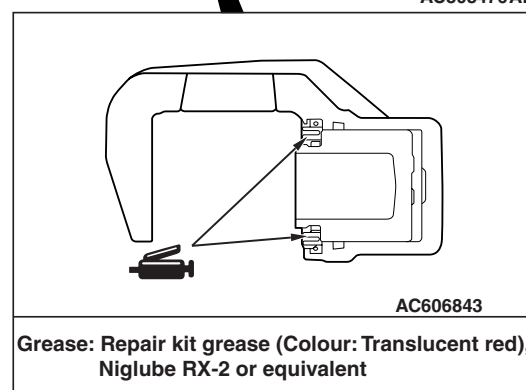
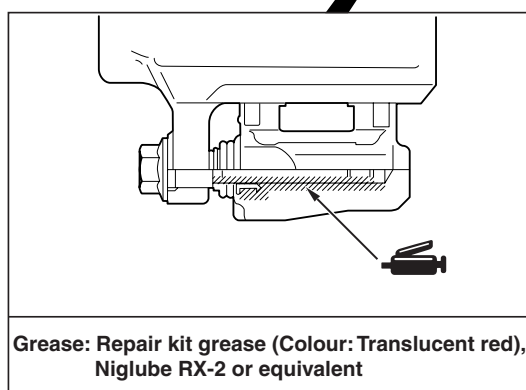
**NOTE:**

&lt;Deleted&gt;

- ~~The brake pad assembly with wear indicator is installed only to the inner side of the brake disc of the left-side brake at factory.~~
- ~~As for the accessory pad set, the brake pad with wear indicator has been established to the inner side of the brake disc on both right side brake and left side brake.~~
- Install the brake pad assembly (with wear indicator) to the inner side of the brake disc, making sure that the wear indicator is located on the top.

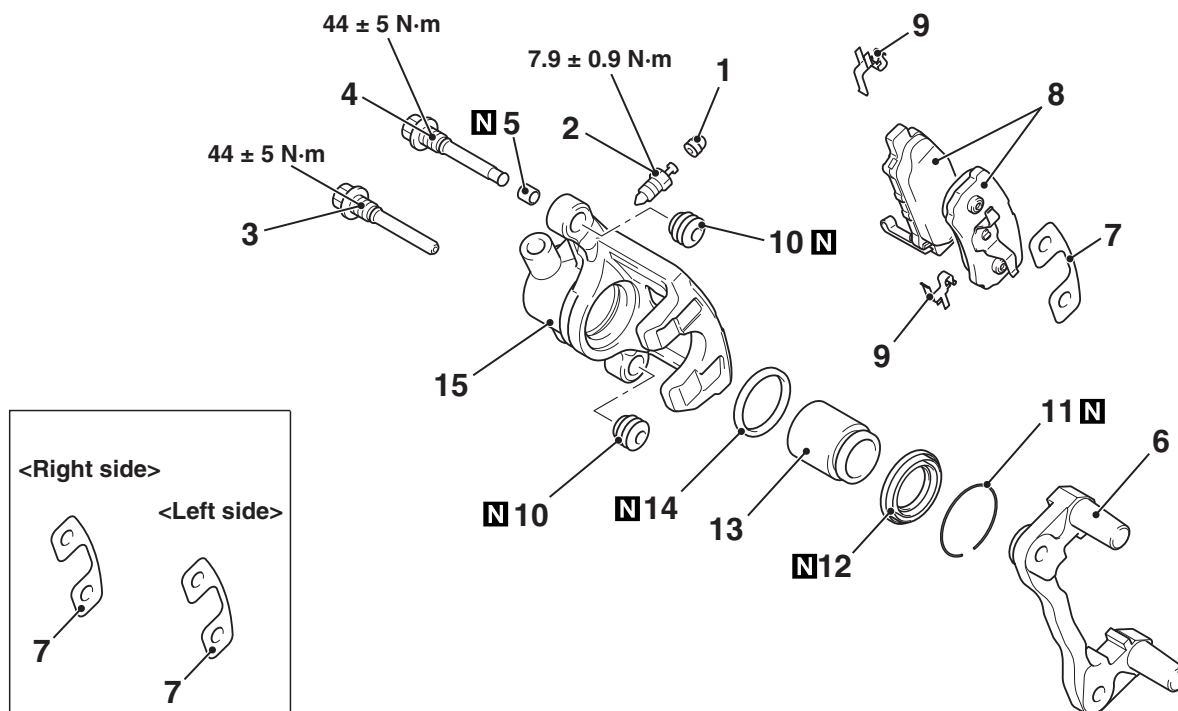
**LUBRICATION POINTS**

AC808476 AB



## DISASSEMBLY AND REASSEMBLY

&lt;Except 2000-turbo&gt;



AC809161AB

	<p>Repair kit grease</p>	<p>&lt;Right side&gt; &lt;Left side&gt;</p> <p>Rear brake clip set</p> <p>&lt;Right side&gt; &lt;Left side&gt;</p> <p>Rear brake pad set</p>
Rear brake caliper kit	Rear brake caliper seal kit	Rear brake pad set

## Disassembly steps

1. Bleeder cap
2. Bleeder
3. Guide pin
4. Lock pin
5. Bushing
6. Caliper support
7. Shim
8. Brake pad assembly
9. Clip
10. Pin boot
11. Boot ring

## Disassembly steps

- <<A>> 12. Piston boot
- <<A>> 13. Piston
- <<B>> 14. Piston seal
15. Caliper body

## NOTE:

&lt;Deleted&gt;

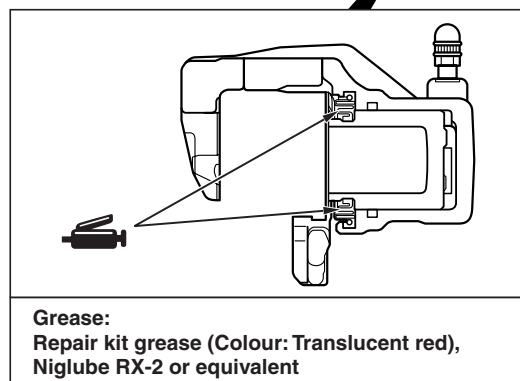
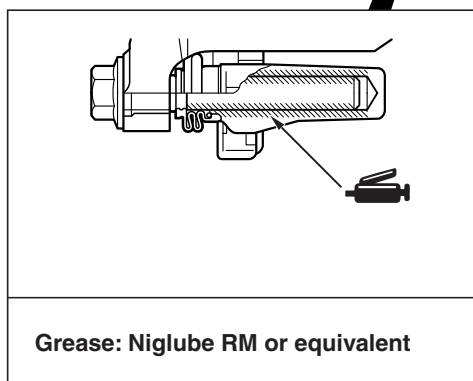
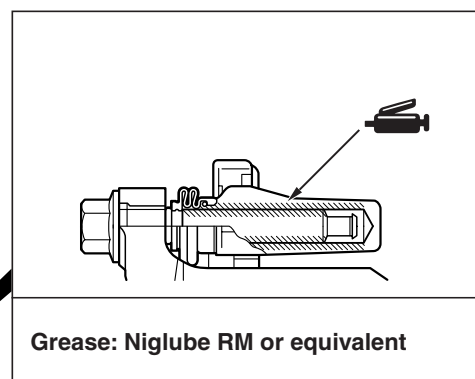
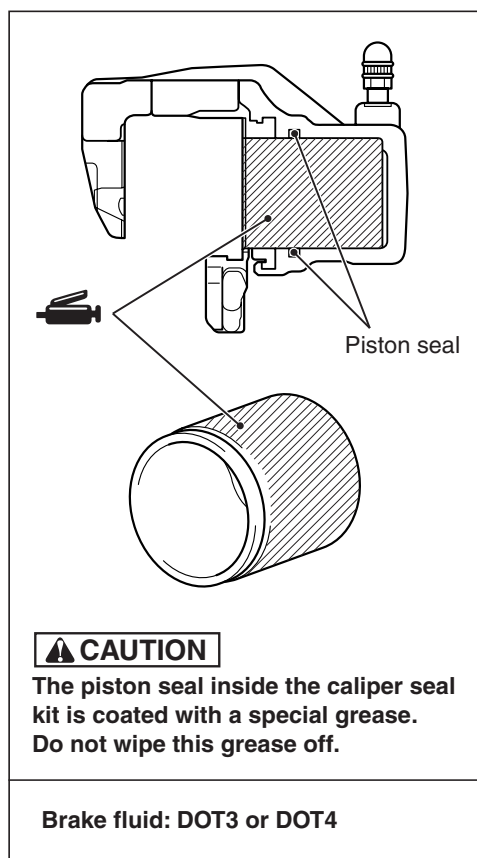
- The brake pad assembly with wear indicator is installed only to the inner side of the brake disc of the left-side brake at factory.
- As for the accessory pad set, the brake pad with wear indicator has been established to the inner side of the brake disc on both right side brake

~~and left side brake.~~ <Deleted>

- Install the brake pad assembly (with wear indicator) to the inner side of the brake disc,

making sure that the wear indicator is located on the bottom.

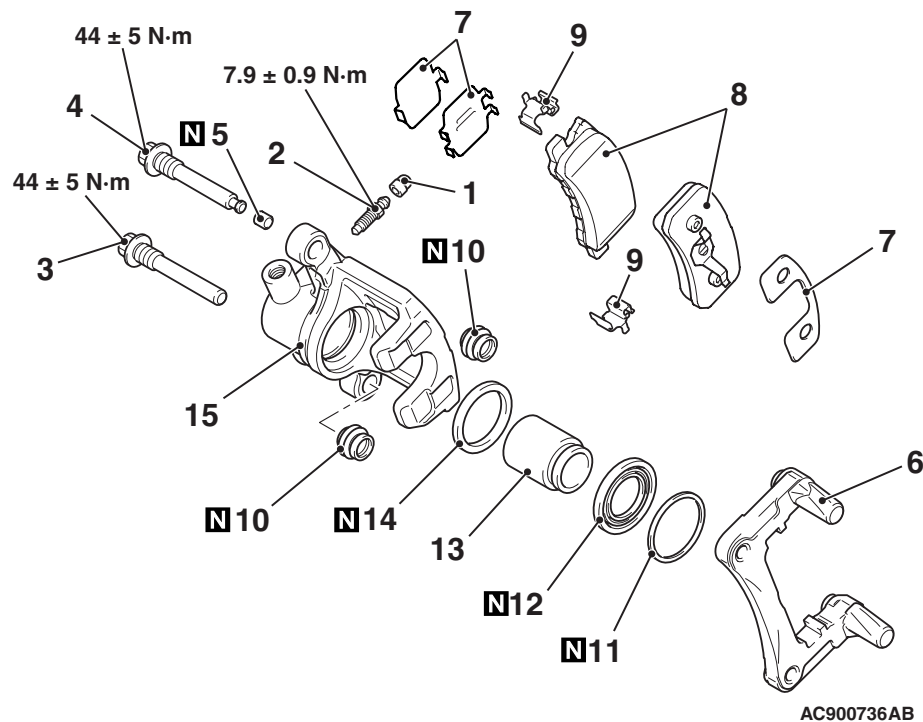
## LUBRICATION POINTS



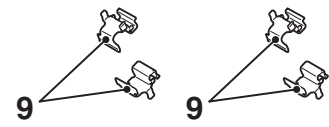
AC801830AC

## DISASSEMBLY AND REASSEMBLY

### <2000-turbo>

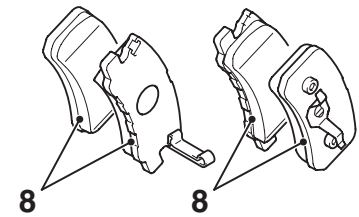


<Right side> <Left side>

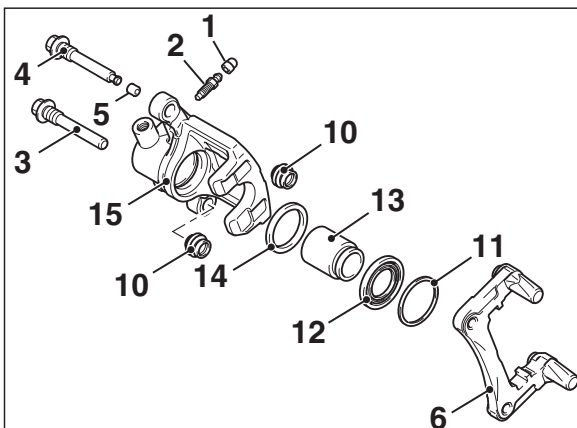


Rear brake clip set

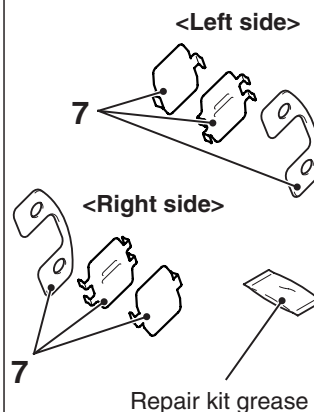
<Right side> <Left side>



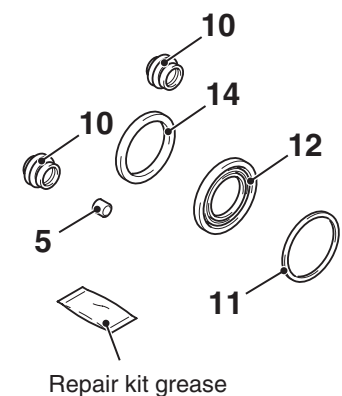
Rear brake pad set



Rear brake caliper kit



Rear brake shim set



Rear brake caliper seal kit

#### Disassembly steps

1. Bleeder cap
2. Bleeder
3. Guide pin
4. Lock pin
5. Bushing
6. Caliper support
7. Shim
8. Brake pad assembly
9. Clip
10. Pin boot
11. Boot ring
12. Piston boot
13. Piston
14. Piston seal
15. Caliper body

&lt;&lt;A&gt;&gt;

&lt;&lt;A&gt;&gt;

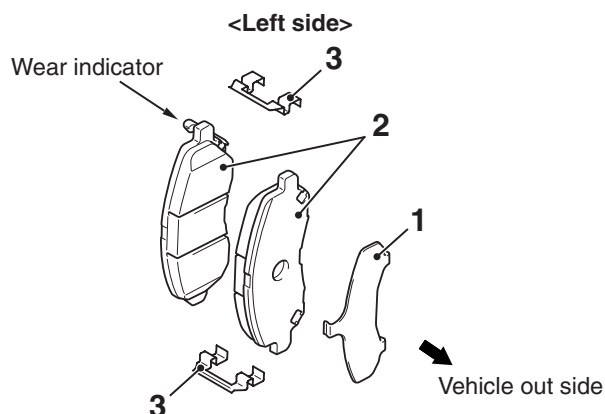
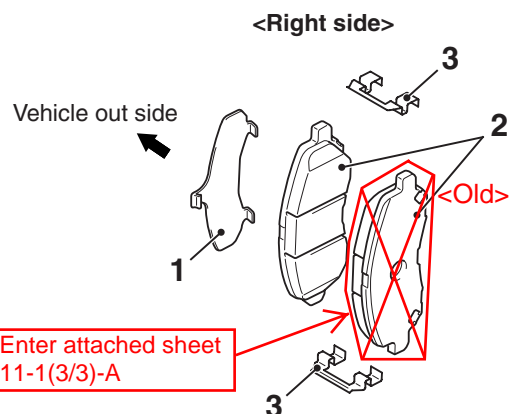
&lt;&lt;B&gt;&gt;

#### NOTE:

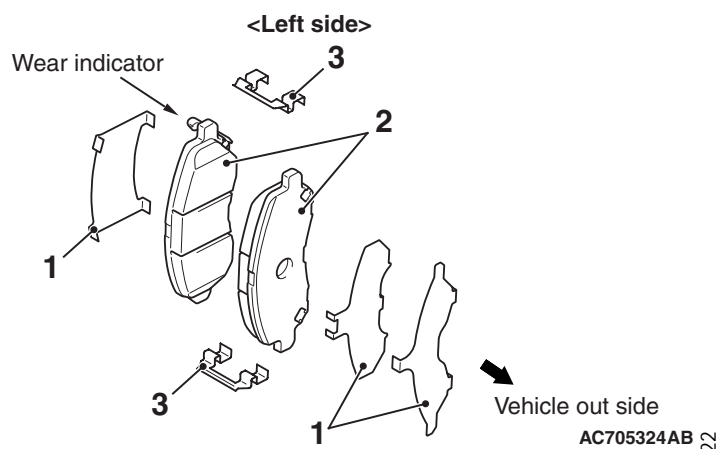
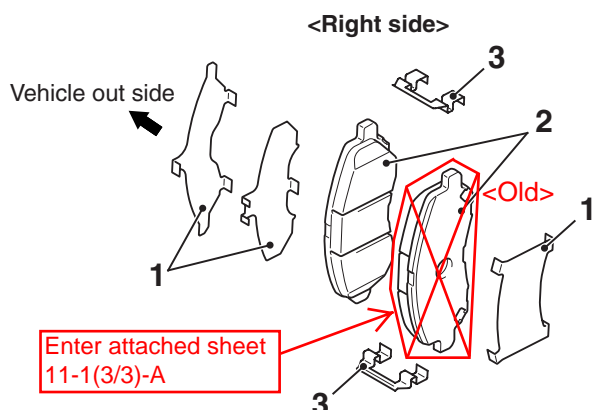
&lt;Deleted&gt;

- The brake pad assembly with wear indicator is installed only to the inner side of the brake disc of the left-side brake at factory.
- As for the accessory pad set, the brake pad with wear indicator has been established to the inner side of the brake disc on both right side brake and left side brake.
- Install the brake pad assembly (with wear indicator) to the inner side of the brake disc, making sure that the wear indicator is located on the bottom.

## &lt;15-inch front disc brake&gt;



## &lt;16-inch front disc brake&gt;



2. Remove the following parts from the caliper body.

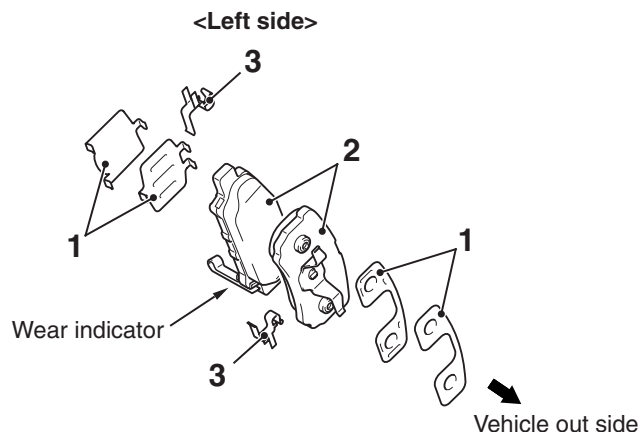
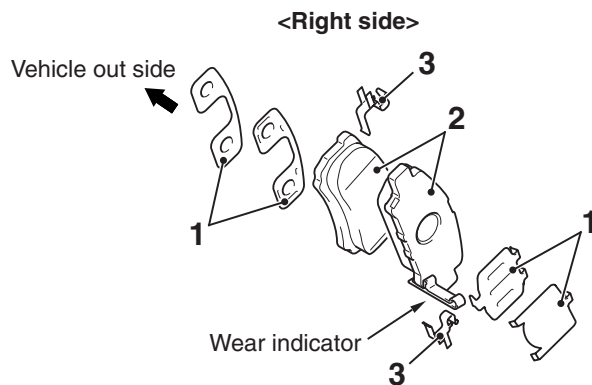
- (1) Shim
- (2) Brake pad assembly
- (3) Clip

**NOTE:**

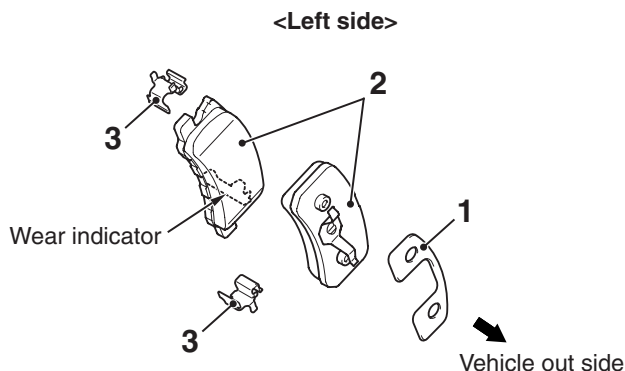
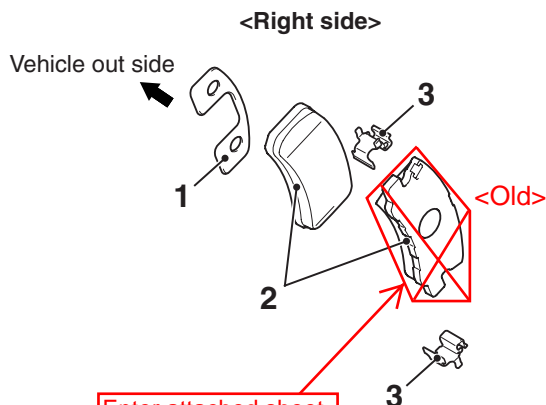
- The brake pad assembly with wear indicator is installed only to the inner side of the brake disc of the left-side brake at factory.
- As for the accessory pad set, the brake pad with wear indicator has been established to the inner side of the brake disc on both right side brake and left side brake.

&lt;Deleted&gt;

## &lt;14-inch rear disc brake&gt;



## &lt;16-inch rear disc brake&gt;



AC705325AB

2. Remove the following parts from the caliper body.

- (1) Shim
- (2) Brake pad assembly
- (3) Clip

**NOTE:**

- The brake pad assembly with wear indicator is installed only to the inner side of the brake disc of the left-side brake at factory. <Except 14-inch rear disc brake>
- As for the accessory pad set, the brake pad with wear indicator has been established to the inner side of the brake disc on both right side brake and left side brake.

**CAUTION**

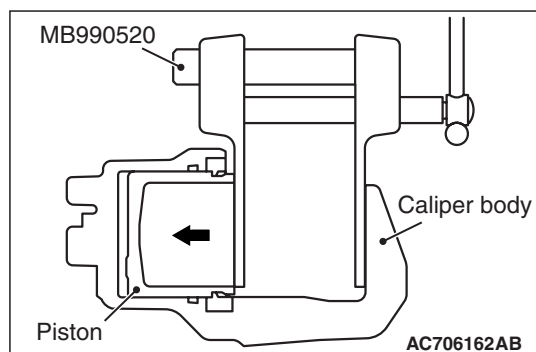
&lt;Deleted&gt;

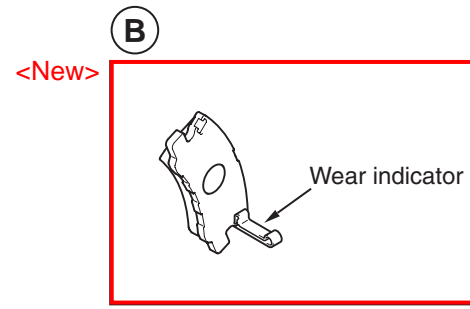
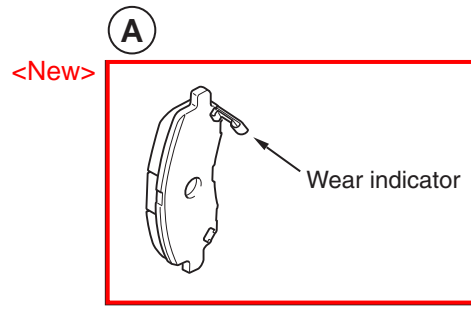
**Keep grease or other soiling off the pad and brake disc friction surfaces.**

3. Clean the piston part, and press the piston into the cylinder using the special tool piston expander (MB990520).
4. Assemble the shim, brake pad assembly and clip to the caliper support, and tighten the guide pin to the specified torque.

**Tightening torque:  $44 \pm 5$  N·m**

**NOTE:** Install the brake pad assembly (with wear indicator) to the inner side of the brake disc, making sure that the wear indicator is located on the bottom.







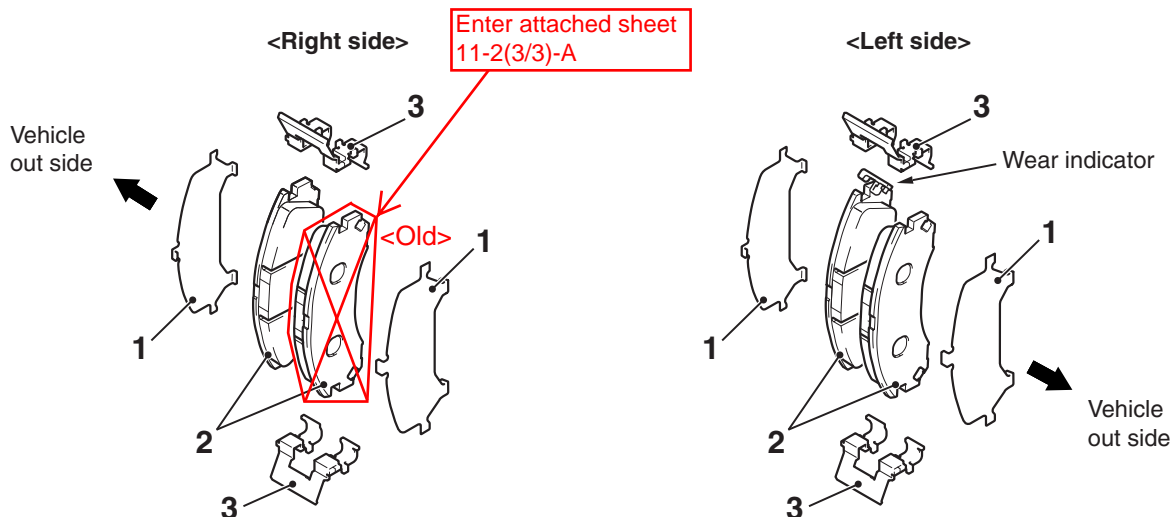
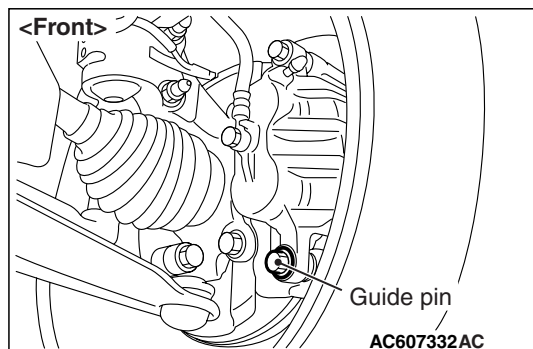
## BRAKE PAD REPLACEMENT &lt;RALLIART&gt;

## &lt;FRONT&gt;

**CAUTION**

When replacing, replace both brake pads (right and left) as a set.

1. Remove the parts indicated in the figure, swivel the caliper body upward and retain it with a wire or similar tool.



AC802170AC

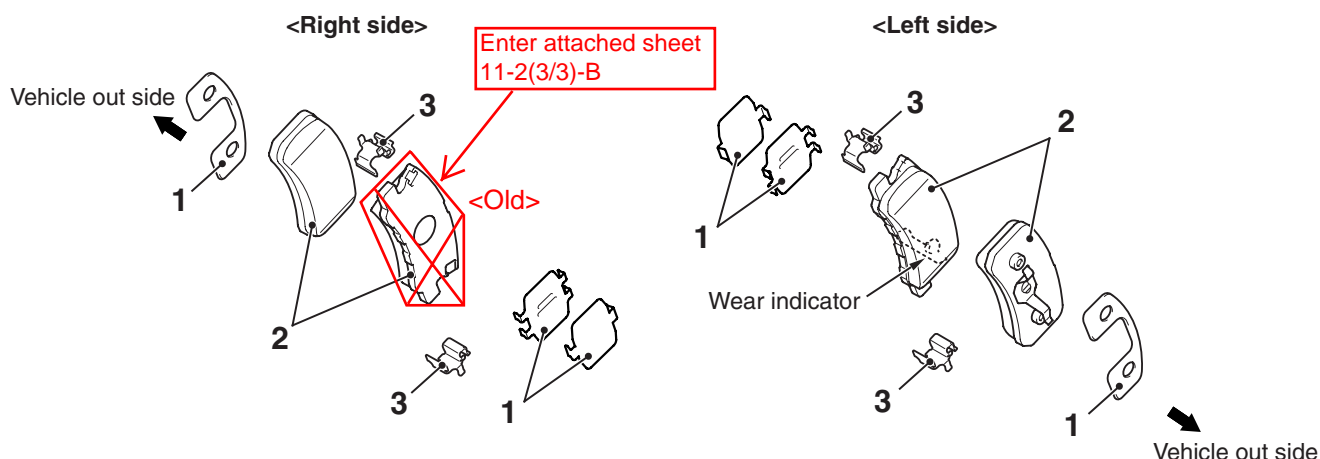
2. Remove the following parts from the caliper body.

- (1) Shim
- (2) Brake pad assembly
- (3) Clip

**NOTE:**

- The brake pad assembly with wear indicator is installed only to the inner side of the brake disc of the left-side brake at factory.
- As for the accessory pad set, the brake pad with wear indicator has been established to the inner side of the brake disc on both right side brake and left side brake.

&lt;Deleted&gt;



AC900716 AB

2. Remove the following parts from the caliper body.

- (1) Shim
- (2) Brake pad assembly
- (3) Clip

**NOTE:**

- The brake pad assembly with wear indicator is installed only to the inner side of the brake disc of the left-side brake at factory.
- As for the accessory pad set, the brake pad with wear indicator has been established to the inner side of the brake disc on both right side brake and left side brake.

**CAUTION**

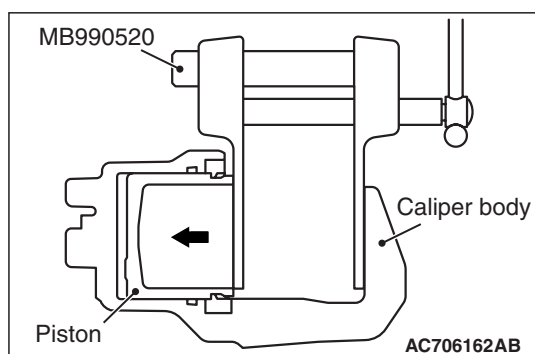
&lt;Deleted&gt;

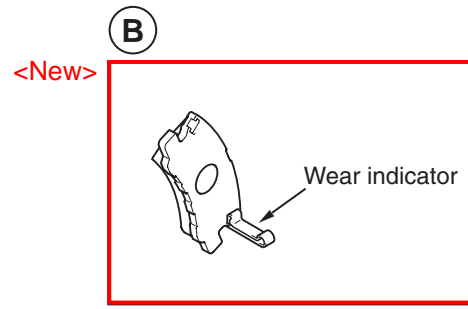
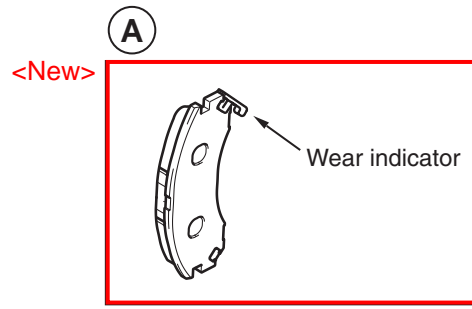
**Keep grease or other soiling off the pad and brake disc friction surfaces.**

3. Clean the piston part, and press the piston into the cylinder using the special tool piston expander (MB990520).
4. Assemble the shim, brake pad assembly and clip to the caliper support, and tighten the guide pin to the specified torque.

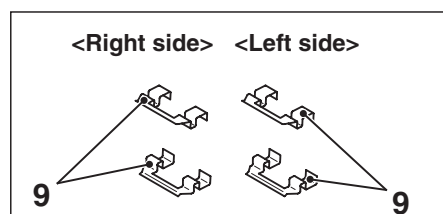
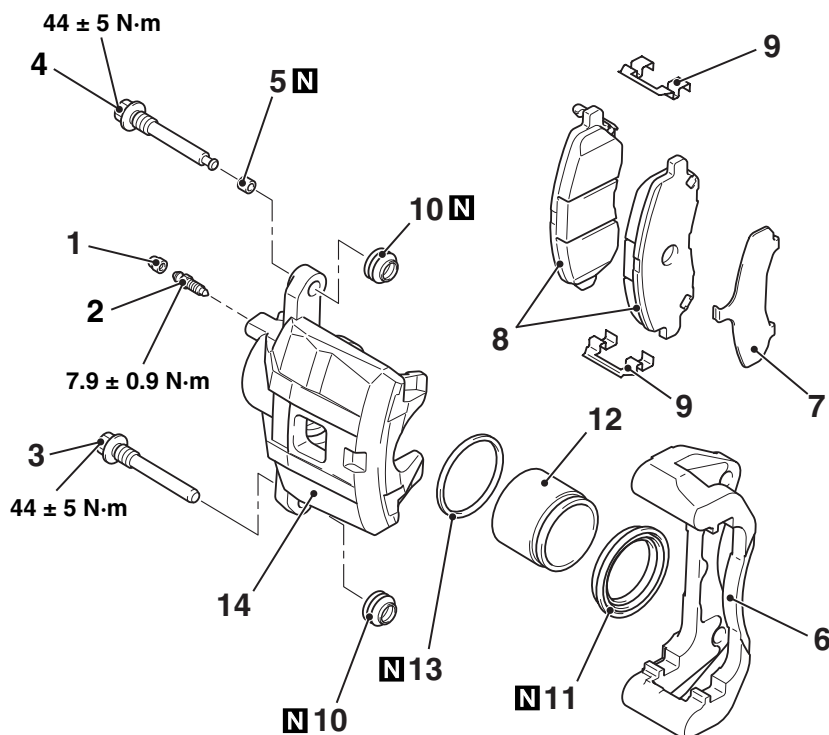
**Tightening torque:  $44 \pm 5$  N·m**

**NOTE:** Install the brake pad assembly (with wear indicator) to the inner side of the brake disc, making sure that the wear indicator is located on the bottom.

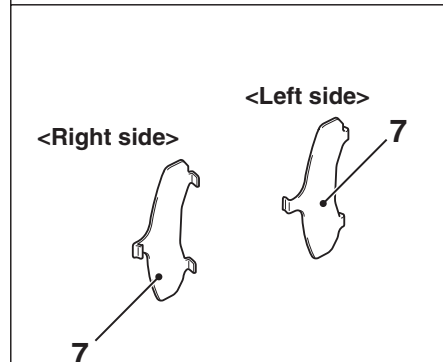




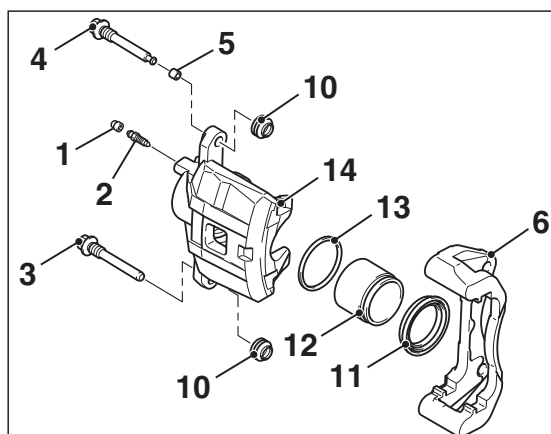
## DISASSEMBLY AND REASSEMBLY <15-inch front disc brake>



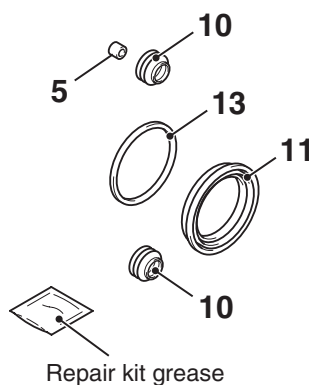
Front brake clip set



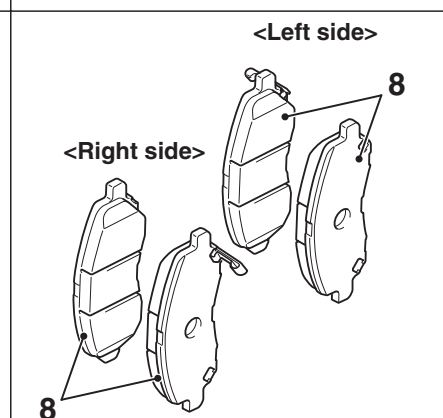
Front brake shim set



### Front brake caliper kit



## Front brake caliper seal kit



### Front brake pad set

AC705549AD

## Disassembly steps

1. Bleeder cap
2. Bleeder
3. Guide pin
4. Lock pin
5. Bushing
6. Caliper support  
(including brake pad assembly,  
clip, and shim)
7. Shim
8. Brake pad assembly
9. Clip
10. Pin boot
11. Piston boot

 $\langle\langle A \rangle\rangle$ 

## Disassembly steps

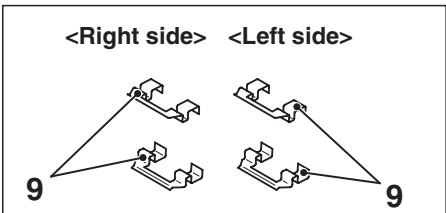
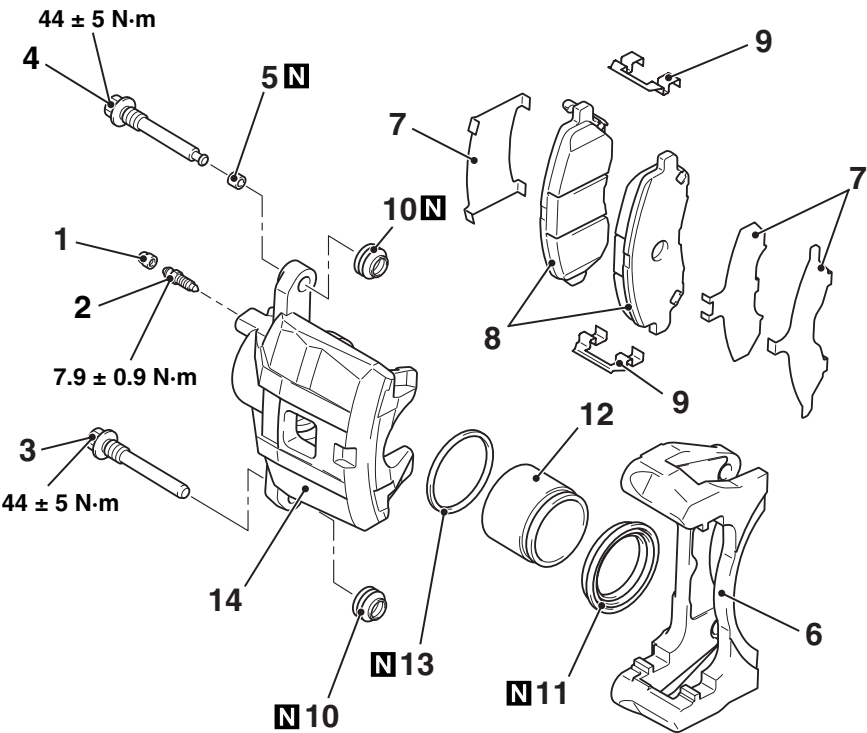
- |       |                  |
|-------|------------------|
| <<A>> | 12. Piston       |
| <<B>> | 13. Piston seal  |
|       | 14. Caliper body |

**NOTE:**

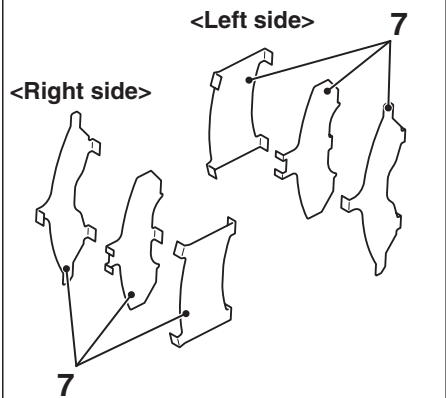
<Deleted>

- ~~The brake pad assembly with wear indicator is installed only to the inner side of the brake disc of the left-side brake at factory.~~
- ~~As for the accessory pad set, the brake pad with wear indicator has been established to the inner side of the brake disc on both right and left.~~
- Install the brake pad assembly (with wear indicator) to the inner side of the brake disc,

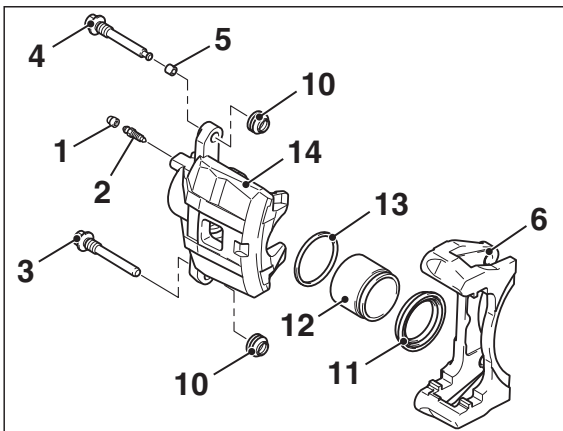
DISASSEMBLY AND REASSEMBLY <16-  
inch front disc brake (Except  
RALLIART)>



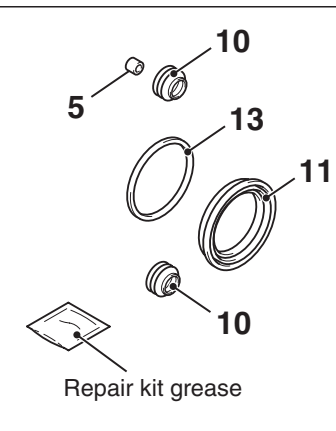
Front brake clip set



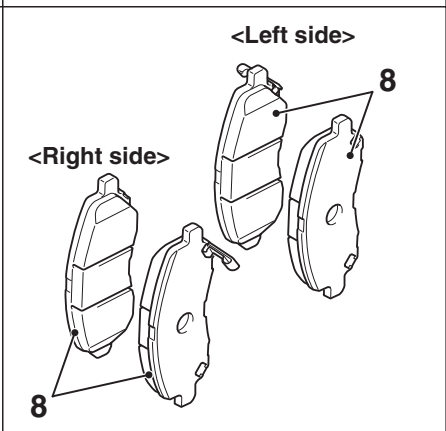
Front brake shim set



Front brake caliper kit



Front brake caliper seal kit



Front brake pad set

29

AC705550AD

Disassembly steps

1. Bleeder cap
2. Bleeder
3. Guide pin
4. Lock pin
5. Bushing
6. Caliper support  
(including brake pad assembly,  
clip, and shim)
7. Shim
8. Brake pad assembly
9. Clip
10. Pin boot

Disassembly steps

- <<A>>  
<<A>>  
<<B>>
11. Piston boot
  12. Piston
  13. Piston seal
  14. Caliper body

NOTE:

- The brake pad assembly with wear indicator is installed only to the inner side of the brake disc of the left-side brake at factory.
- As for the accessory pad set, the brake pad with wear indicator has been established to the inner side of the brake disc on both right and left.

MSB-09E55-003 (09.05.02)

Disassembly steps

- 1. Bleeder cap
- 2. Bleeder
- 3. Guide pin
- 4. Lock pin
- 5. Bushing
- 6. Caliper support  
(including brake pad, clip, and shim)
- 7. Shim
- 8. Brake pad assembly
- 9. Clip
- 10. Pin boot
- 11. Boot ring
- 12. Piston boot
- 13. Piston

Disassembly steps

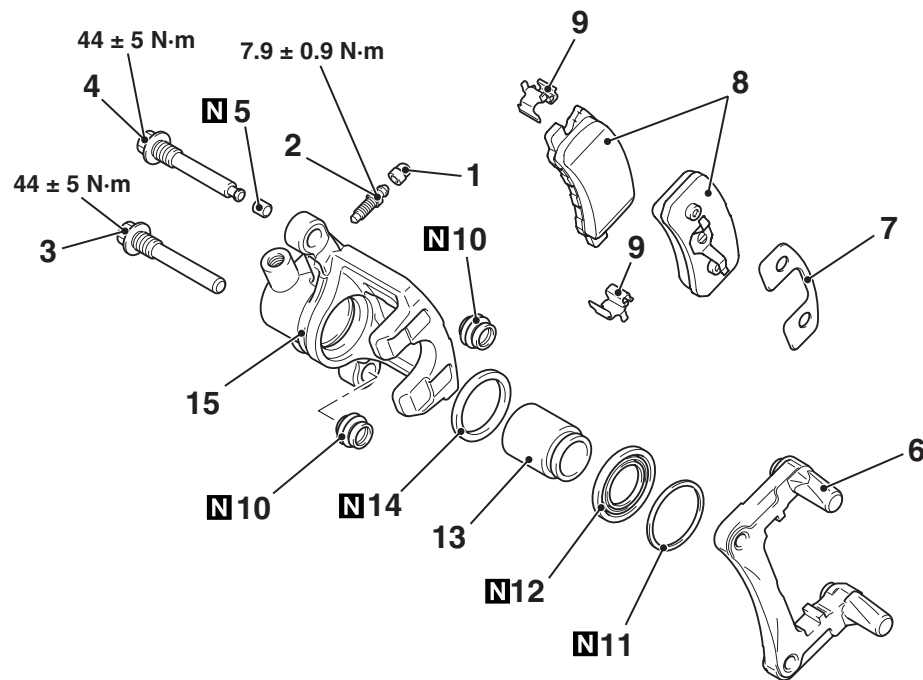
- 14. Piston seal
- 15. Caliper body

NOTE:

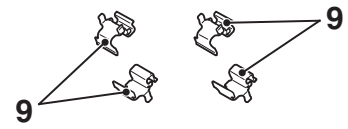
<Deleted>

- ~~The brake pad assembly with wear indicator is installed only to the inner side of the brake disc of the left-side brake at factory.~~
- ~~As for the accessory pad set, the brake pad with wear indicator has been established to the inner side of the brake disc on both right side brake and left side brake.~~
- Install the brake pad assembly (with wear indicator) to the inner side of the brake disc, making sure that the wear indicator is located on the top.

# DISASSEMBLY AND REASSEMBLY <16-inch rear disc brake (Except RALLIART)>

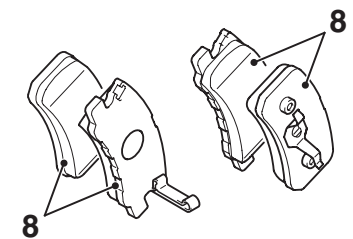


&lt;Right side&gt; &lt;Left side&gt;

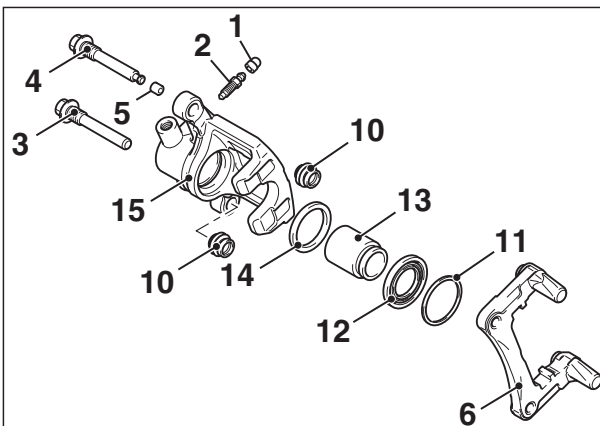


Rear brake clip set

&lt;Right side&gt; &lt;Left side&gt;

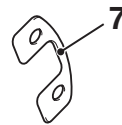


Rear brake pad set

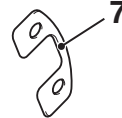


Rear brake caliper kit

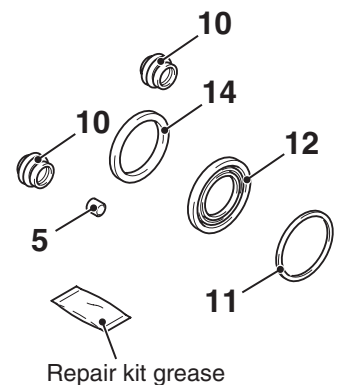
&lt;Left side&gt;



&lt;Right side&gt;



Rear brake shim set



Rear brake caliper seal kit

AC802002AB

## Disassembly steps

1. Bleeder cap
2. Bleeder
3. Guide pin
4. Lock pin
5. Bushing
6. Caliper support  
(including brake pad assembly,  
clip, and shim)
7. Shim
8. Brake pad assembly
9. Clip
10. Pin boot
11. Boot ring
12. Piston boot
13. Piston

&lt;&lt;A&gt;&gt;

&lt;&lt;A&gt;&gt;

## Disassembly steps

&lt;&lt;B&gt;&gt;

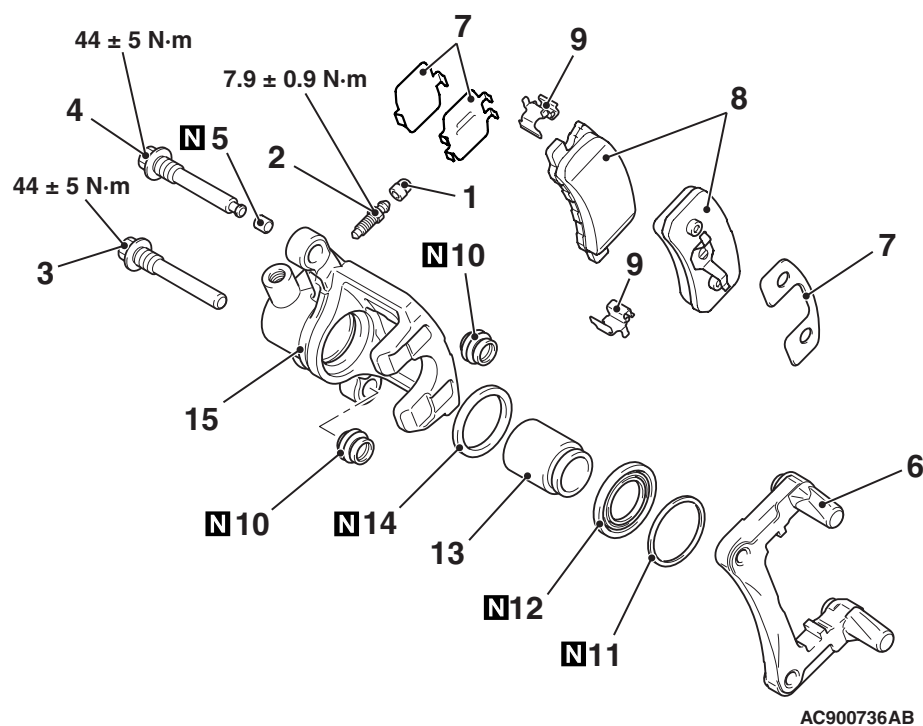
14. Piston seal
15. Caliper body

### NOTE:

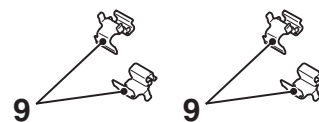
&lt;Deleted&gt;

- ~~The brake pad assembly with wear indicator is installed only to the inner side of the brake disc of the left-side brake at factory.~~
- ~~As for the accessory pad set, the brake pad with wear indicator has been established to the inner side of the brake disc on both right side brake and left side brake.~~
- Install the brake pad assembly (with wear indicator) to the inner side of the brake disc, making sure that the wear indicator is located on the bottom.

# DISASSEMBLY AND REASSEMBLY <16-inch rear disc brake (RALLIART)>

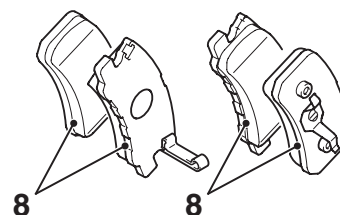


<Right side> <Left side>

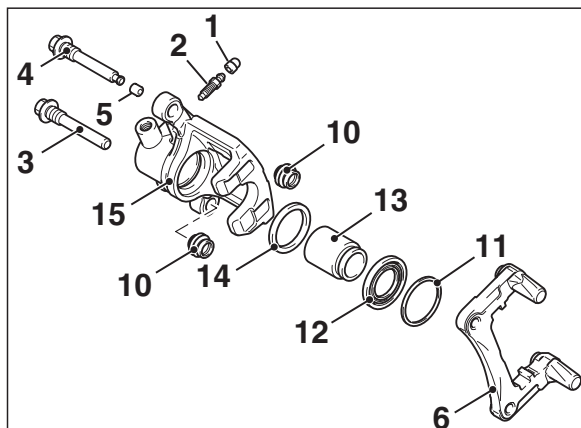


Rear brake clip set

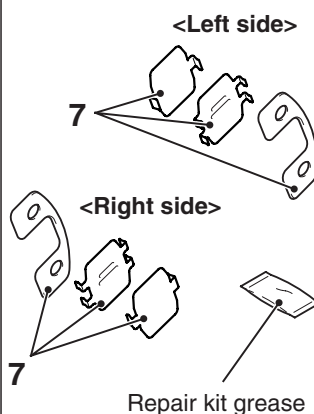
<Right side> <Left side>



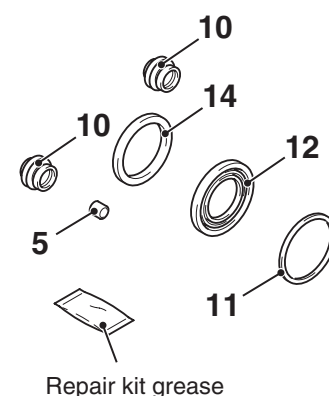
Rear brake pad set



Rear brake caliper kit



Rear brake shim set



Rear brake caliper seal kit

## Disassembly steps

1. Bleeder cap
2. Bleeder
3. Guide pin
4. Lock pin
5. Bushing
6. Caliper support
7. Shim
8. Brake pad assembly
9. Clip
10. Pin boot
11. Boot ring
12. Piston boot
13. Piston
14. Piston seal
15. Caliper body

&lt;&lt;A&gt;&gt;

&lt;&lt;A&gt;&gt;

&lt;&lt;B&gt;&gt;

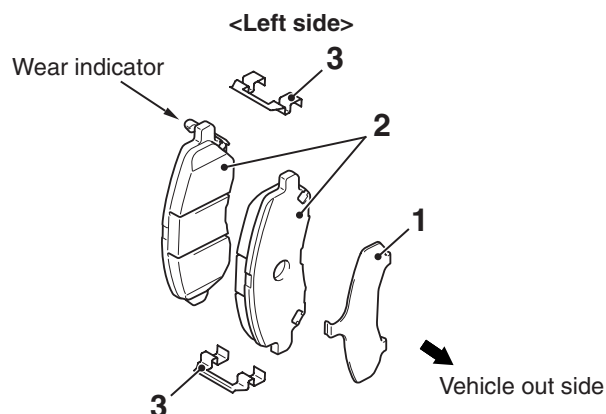
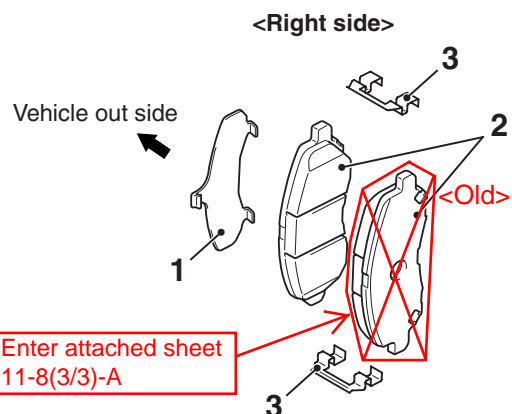
## NOTE:

&lt;Deleted&gt;

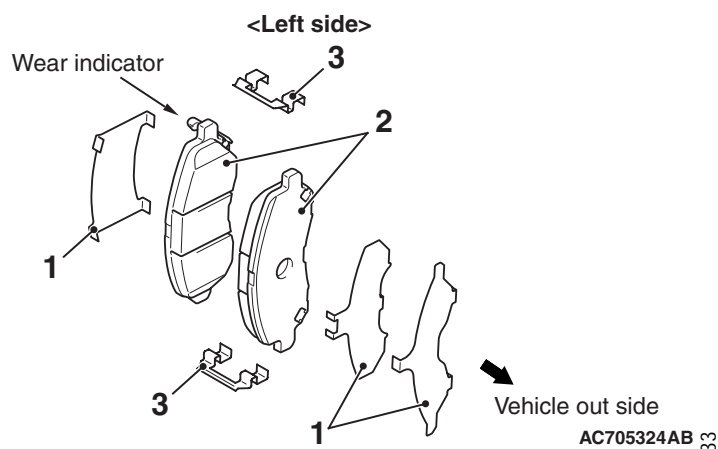
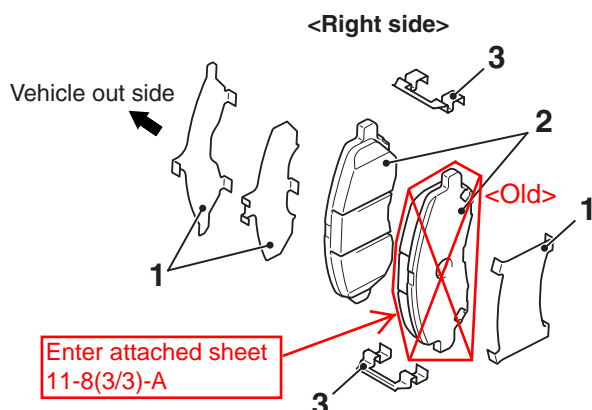
- ~~The brake pad assembly with wear indicator is installed only to the inner side of the brake disc of the left-side brake at factory.~~
- ~~As for the accessory pad set, the brake pad with wear indicator has been established to the inner side of the brake disc on both right side brake and left side brake.~~
- Install the brake pad assembly (with wear indicator) to the inner side of the brake disc, making sure that the wear indicator is located on the bottom.



## &lt;15-inch front disc brake&gt;



## &lt;16-inch front disc brake&gt;



2. Remove the following parts from the caliper body.

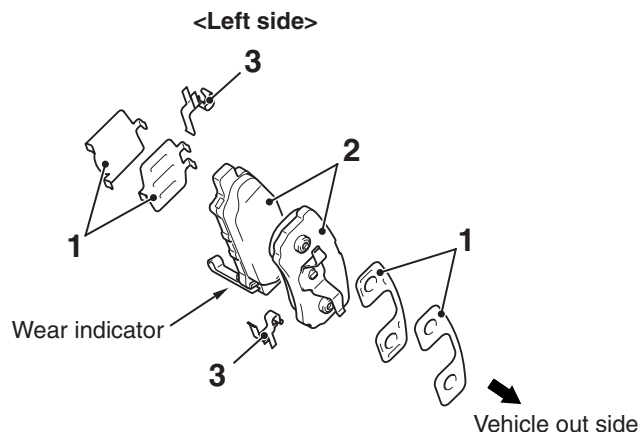
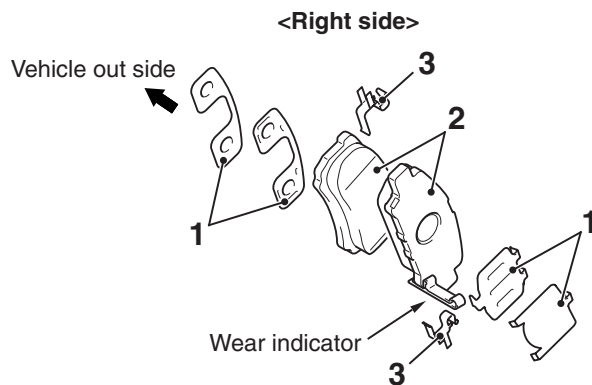
- (1) Shim
- (2) Brake pad assembly
- (3) Clip

**NOTE:**

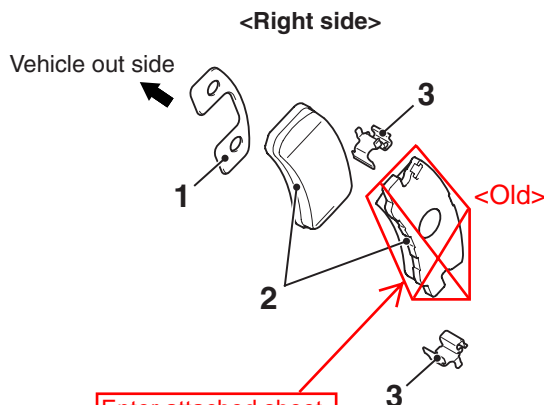
- The brake pad assembly with wear indicator is installed only to the inner side of the brake disc of the left-side brake at factory.
- As for the accessory pad set, the brake pad with wear indicator has been established to the inner side of the brake disc on both right side brake and left side brake.

&lt;Deleted&gt;

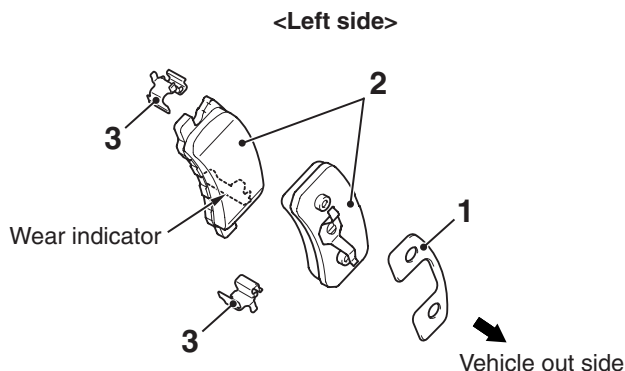
## &lt;14-inch rear disc brake&gt;



## &lt;16-inch rear disc brake&gt;



Enter attached sheet  
11-8(3/3)-B



AC705325AB

2. Remove the following parts from the caliper body.

- (1) Shim
- (2) Brake pad assembly
- (3) Clip

**NOTE:**

- The brake pad assembly with wear indicator is installed only to the inner side of the brake disc of the left-side brake at factory. <16-inch rear disc brake>
- As for the accessory pad set, the brake pad with wear indicator has been established to the inner side of the brake disc on both right side brake and left side brake.

**CAUTION**

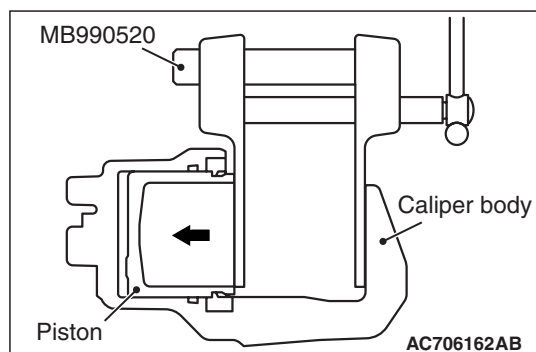
&lt;Deleted&gt;

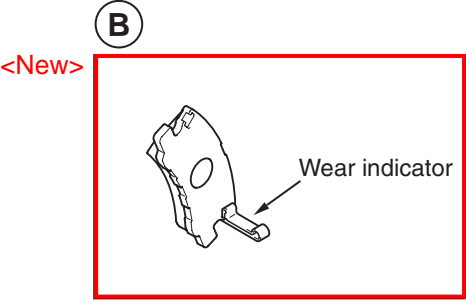
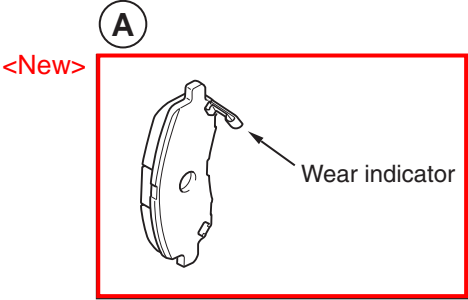
**Keep grease or other soiling off the pad and brake disc friction surfaces.**

3. Clean the piston part, and press the piston into the cylinder using the special tool piston expander (MB990520).
4. Assemble the shim, brake pad assembly and clip to the caliper support, and tighten the guide pin to the specified torque.

**Tightening torque:  $44 \pm 5$  N·m**

**NOTE:** Install the brake pad assembly (with wear indicator) to the inner side of the brake disc, making sure that the wear indicator is located on the bottom.





**Disassembly steps**

- <<A>> 13. Piston boot  
 <<A>> 14. Piston  
 <<B>> 15. Piston seal  
 16. Caliper body

&lt;Deleted&gt;

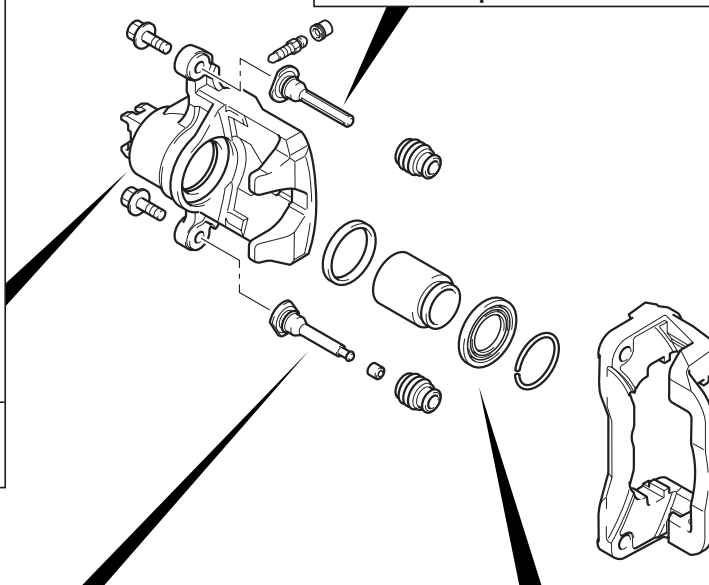
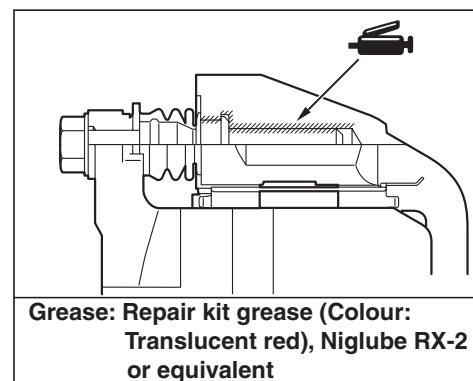
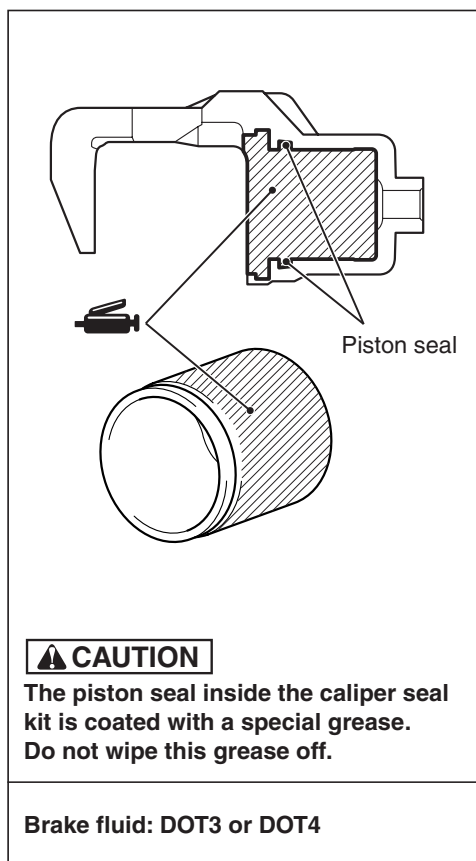
- As for the accessory pad set, the brake pad with wear indicator has been established to the inner side of the brake disc on both right side brake and left side brake.

**NOTE:**

&lt;Deleted&gt;

- The brake pad assembly with wear indicator is installed only to the inner side of the brake disc of the left side brake at factory.

- Install the brake pad assembly (with wear indicator) to the inner side of the brake disc, making sure that the wear indicator is located on the bottom.

**LUBRICATION POINTS**

AC707793 AC

