



SERVICE BULLETIN

GLOBAL AFTER SALES OFFICE, MITSUBISHI MOTORS CORPORATION

PURPOSE : INFORMATION	ISSUE NO. : MSB-10E54-003	DATE : 2010-09-05
SUBJECT : OPERATION CHECK AFTER REPLACING THE RADIO AND CD PLAYER (AUDIO UNIT)	<MODEL> <M/Y>	
GROUP : CHASSIS ELECTRICAL	(EUR/RUSSIA/UK) See following <u>2. Applicable Manuals table.</u>	

1. Description:

The following NOTE for the operation check after replacing the radio and CD player (audio unit) is added in "REMOVAL AND INSTALLATION". This Service Bulletin contains details regarding this addition.

NOTE: When the radio and CD player (audio unit) is replaced, always turn the ignition switch to the ON position once and then carry out the operation check.

2. Applicable Manuals:

See Attached sheets 1 (1/2) and 1 (2/2).

There may be some attached sheets not included in this Service Bulletin because they are not applicable to your market. Their sheet numbers are not listed in the above table.

3. Details:

See Attached sheet 3.

<EUR>

Manual/Model	<M/Y>	Pub. No.	Title (Info-ID)	Attached Sheet
2008 LANCER Workshop Manual (CY0A)	08	CG1E08E2-CD (English) CG1S08E2-CD (Spanish) CG1F08E2-CD (French) CG1G08E2-CD (German)	Radio with CD Player Removal and Installation (M544-01-090-15900-01)	Attached sheet 3
2009 LANCER Workshop Manual (CY0A)	09	CG1E09E1-CD (English) CG1S09E1-CD (Spanish) CG1F09E1-CD (French) CG1G09E1-CD (German) CG1I09E1-CD (Italian)	Radio with CD Player Removal and Installation (M544-01-090-32000-01)	
2010 LANCER Workshop Manual (CY0A)	10	CG1E10E1-CD (English) CG1S10E1-CD (Spanish) CG1F10E1-CD (French) CG1G10E1-CD (German) CG1I10E1-CD (Italian)	Radio with CD Player Removal and Installation (M544-01-090-46100-01)	
2009 LANCER EVOLUTION/ LANCER EVOLUTION EX Workshop Manual (CZ4A)	09	CGEE09E1-CD (English) CGES09E1-CD (Spanish) CGEF09E1-CD (French) CGEG09E1-CD (German) CGEI09E1-CD (Italian)	Radio with CD Player Removal and Installation (M544-01-090-15901-01)	
2010 LANCER EVOLUTION Workshop Manual (CZ4A)	10	CGEE10E1-CD (English) CGES10E1-CD (Spanish) CGEF10E1-CD (French) CGEG10E1-CD (German) CGEI10E1-CD (Italian)	Radio with CD Player Removal and Installation (M544-01-090-49400-01)	
2007 OUTLANDER Workshop Manual (CW0W)	07	CGXE07E1-CD (English) CGXS07E1-CD (Spanish) CGXF07E1-CD (French) CGXG07E1-CD (German)	Radio with CD Player Removal and Installation (M544-01-090-12600-01)	
2008 OUTLANDER Workshop Manual (CW0W)	08	CGXE08E2-CD (English) CGXS08E2-CD (Spanish) CGXF08E2-CD (French) CGXG08E2-CD (German)	Radio with CD Player Removal and Installation (M544-01-090-12600-01)	
2009 OUTLANDER Workshop Manual (CW0W)	09	CGXE09E1-CD (English) CGXS09E1-CD (Spanish) CGXF09E1-CD (French) CGXG09E1-CD (German) CGXI09E1-CD (Italian)	Radio with CD Player Removal and Installation (M544-01-090-34200-01)	
2010 OUTLANDER Workshop Manual (CW0W)	10	CGXE10E1-CD (English) CGXS10E1-CD (Spanish) CGXF10E1-CD (French) CGXG10E1-CD (German) CGXI10E1-CD (Italian)	Radio with CD Player Removal and Installation (M544-01-090-48300-01)	
2009 LANCER SPORTBACK Workshop Manual (CX0A)	09	CG4E09E1-CD (English) CG4S09E1-CD (Spanish) CG4F09E1-CD (French) CG4G09E1-CD (German) CG4I09E1-CD (Italian)	Radio with CD Player Removal and Installation (M544-01-090-35300-01)	
2010 LANCER SPORTBACK Workshop Manual (CX0A)	10	CG4E10E1-CD (English) CG4S10E1-CD (Spanish) CG4F10E1-CD (French) CG4G10E1-CD (German) CG4I10E1-CD (Italian)	Radio with CD Player Removal and Installation (M544-01-090-35300-01)	

<UK>

Manual/Model	<M/Y>	Pub. No.	Title (Info-ID)	Attached Sheet
2008 LANCER EVOLUTION X Workshop Manual (CZ4A)	08	N/A	Radio with CD Player Removal and Installation (M544-01-090-29000-01)	Attached sheet 3

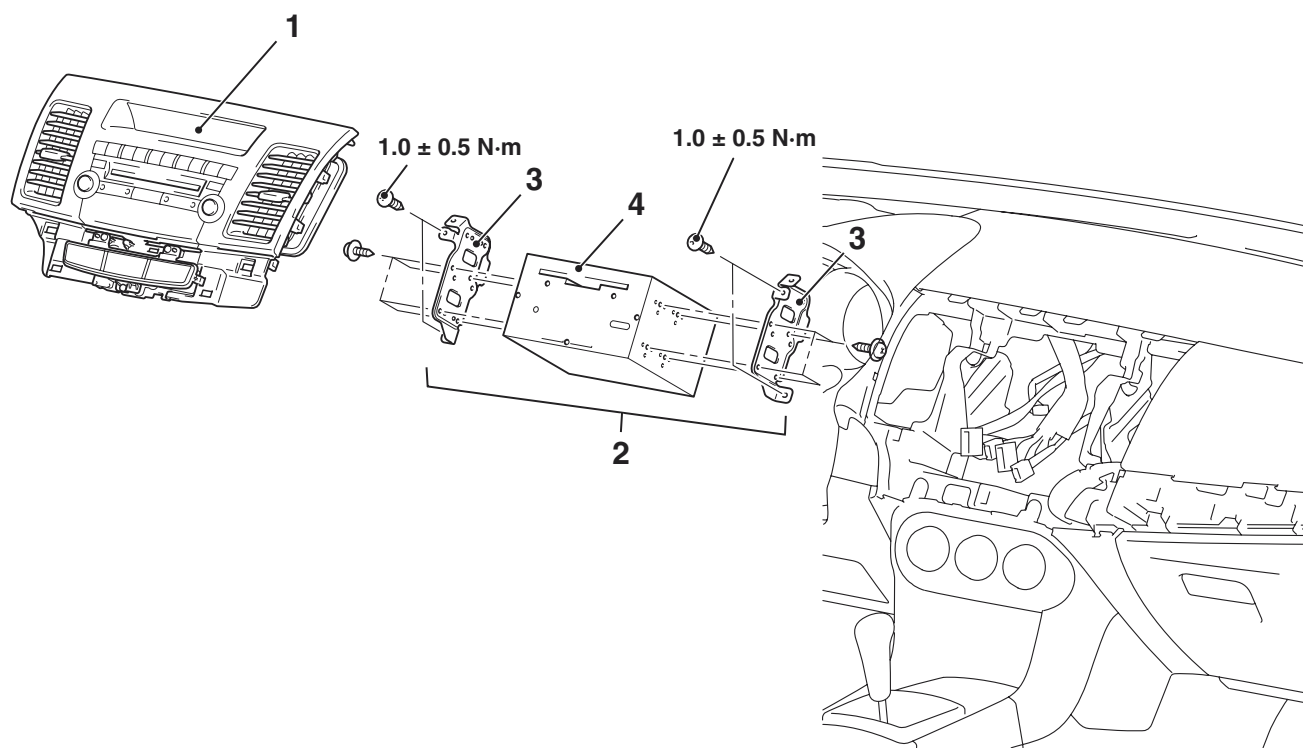
<RUSSIA>

Underneath Manual/Model	<M/Y>	Underneath Pub. No.	Title (Info-ID)	Attached Sheet
2008 LANCER Workshop Manual (CY0A)	08	N/A	Radio with CD Player Removal and Installation (M544-01-090-15900-01)	Attached sheet 3
2010 LANCER EVOLUTION Workshop Manual (CZ4A)	10	N/A	Radio with CD Player Removal and Installation (M544-01-090-49400-01)	
2007 OUTLANDER Workshop Manual (CW0W)	07	N/A	Radio with CD Player Removal and Installation (M544-01-090-12600-01)	

NOTE: When the radio and CD player (audio unit) is replaced, always turn the ignition switch to the ON position once and then carry out the operation check.

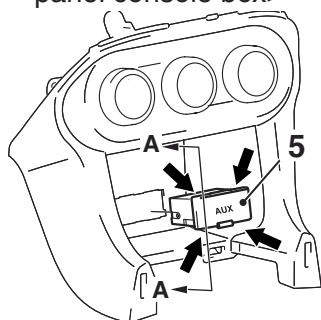
<Added>

REMOVAL AND INSTALLATION

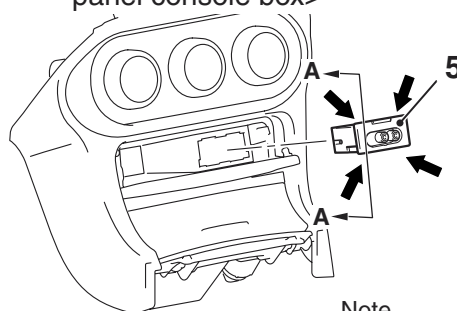


AC609097AB

<Vehicles with instrument panel console box>

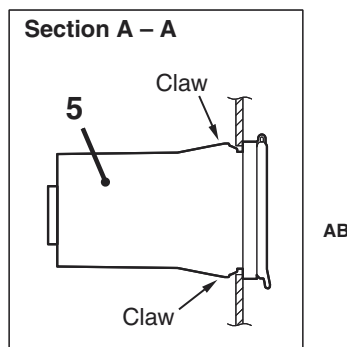


<Vehicles without instrument panel console box>



Note

← : Claw positions



AC608893

Radio and CD player Removal Steps

1. Instrument centre panel (Refer to GROUP 52A – Instrument Centre Panel assembly).
2. Radio and CD player assembly
3. Radio and CD player bracket
4. Radio and CD player

Audio Adaptor Removal Steps

- Instrument console box (Refer to GROUP 52A – Instrument Centre Panel assembly).
- 5. Audio adaptor <Vehicles with audio amplifier>