

PURPOSE : INFORMATION	ISSUE NO. : MSB-11E26-001	DATE : 2011-01-20
SUBJECT : DRIVESHAFT ASSEMBLY BOLT TIGHTENING TORQUE	<div> <div><MODEL></div> <div>(EUR)</div> <div>OUTLANDER</div> <div>(CW0W),</div> <div>ASX</div> <div>(GA0W)</div> </div> <div> <div><M/Y></div> <div>11</div> </div>	
GROUP : FRONT AXLE		

1. Description:

In order to improve reliability, the bolt holding the right side driveshaft assembly to the adapter bracket has been changed for 4N1-2WD vehicles. Accordingly, descriptions in the applicable Workshop Manuals are changed. This Service Bulletin contains the modified descriptions.

Overview of change

(1) Type of bolt is changed.

Current: Washer assembled bolt → New: Flange bolt

(2) Tightening torque is changed.

Current: 42 ± 8 N·m → New: 46 ± 11 N·m

2. Applicable Manuals:

Manual	Pub. No.	Title (Info-ID)	Attached Sheet
2011 OUTLANDER Workshop Manual CD-ROM	CGXE11E2-CD (English) CGXF11E2-CD (French) CGXG11E2-CD (German) CGXS11E2-CD (Spanish) CGXI11E2-CD (Italian)	Driveshaft Assembly Removal and Installation (M261-00-352-19100-01)	Attached sheet 1
2011 ASX Workshop Manual CD-ROM	CGWE11E2-CD (English) CGWF11E2-CD (French) CGWG11E2-CD (German) CGWS11E2-CD (Spanish) CGWI11E2-CD (Italian)	Driveshaft Assembly Removal and Installation (M261-00-352-13500-01)	Attached sheet 2

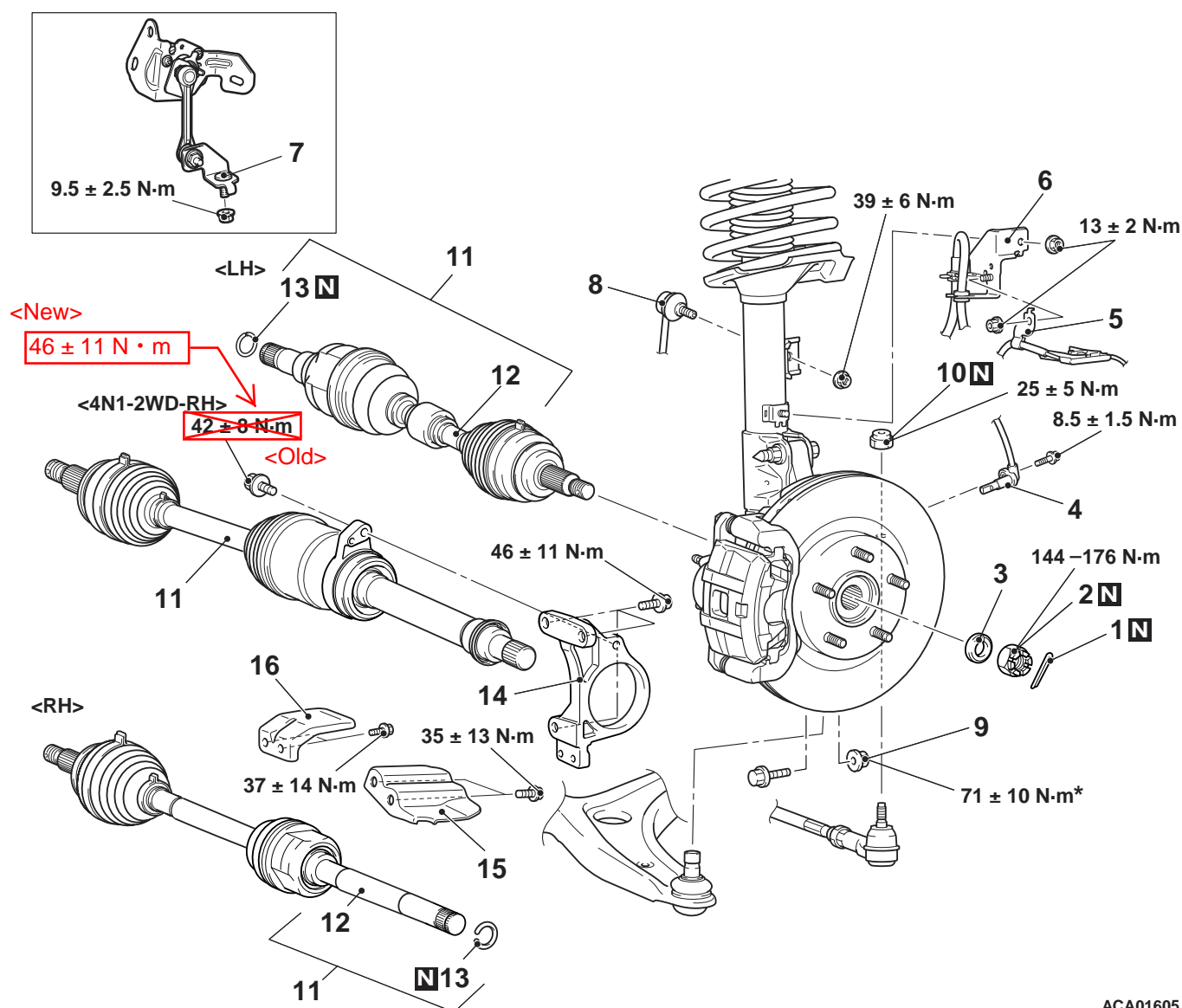
There may be some attached sheets not included in this Service Bulletin because they are not applicable to your market. Their sheet numbers are not listed in the above table.

3. Effective Date:

From March 2011

4. Details:

See Attached sheets 1 and 2.



ACA01605AB

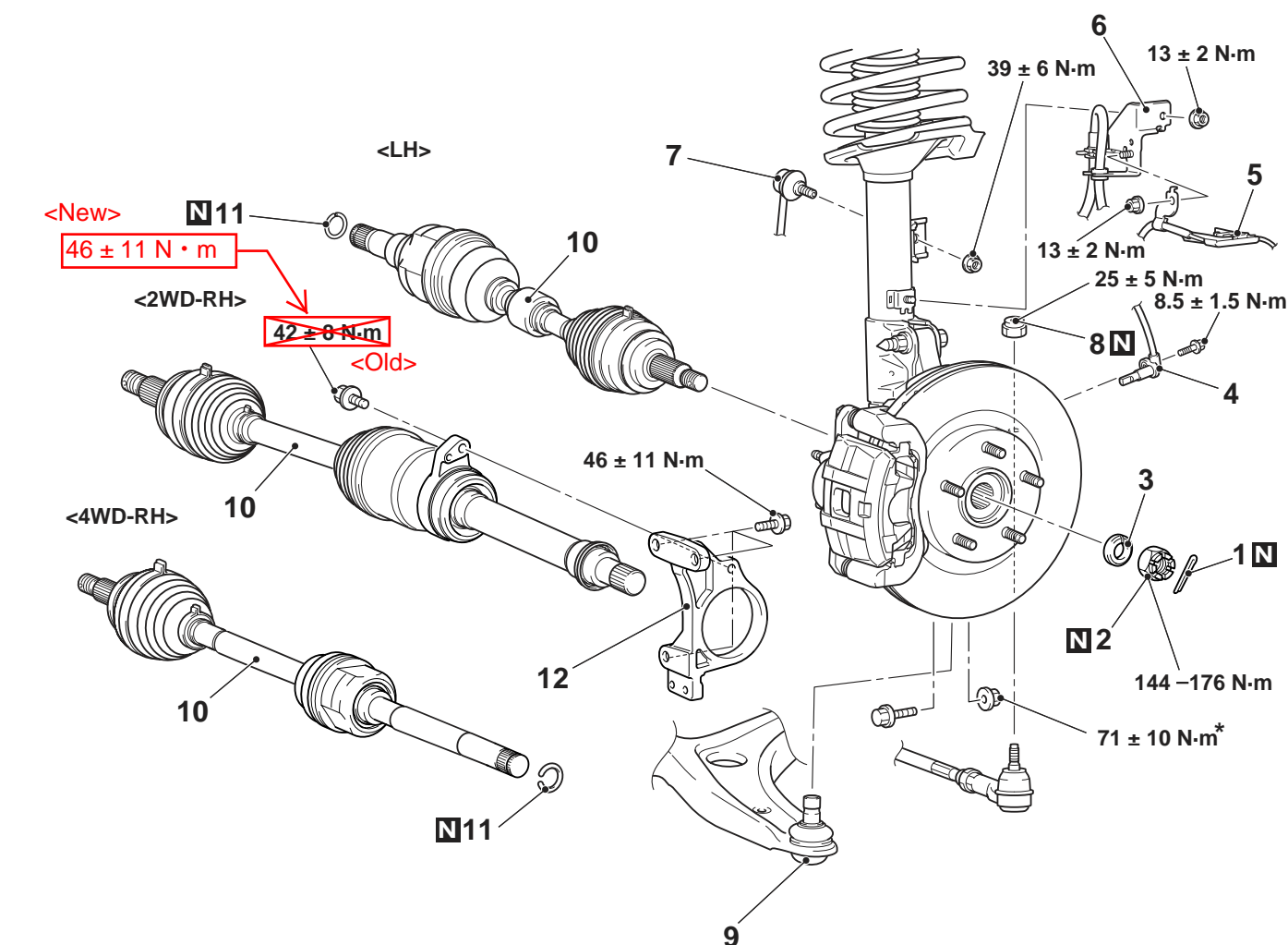
Removal steps

- <<A>> >>C<<
>>C<<
1. Split pin
 2. Driveshaft nut
 3. Washer
 4. Front wheel speed sensor
 5. Front wheel speed sensor harness clamp
 6. Brake hose bracket
 7. Front height sensor to lower arm connection <Vehicles with headlamp automatic levelling system>
- <> >>B<<
8. Stabilizer link connection

Removal steps

- <<C>>
9. Self-locking nut (lower arm ball joint connection)
 10. Self-locking nut (tie-rod end connection)
- <<D>> >>A<<
11. Driveshaft assembly
 12. Driveshaft
 13. Circlip
 14. Adapter bracket
 15. Heat protector <4HK>
 16. Heat protector <6B3>

<Diesel>



ACA00109 AB

Removal steps

- Front height sensor to lower arm connection removal (Refer to GROUP 54A, Height sensor.) <Vehicles with headlamp automatic levelling system>

- <<A>> >>D<<
 >>D<<
- Split pin
 - Driveshaft nut
 - Washer
 - Front wheel speed sensor (Refer to GROUP 35C, Wheel Speed Sensor)
 - Front wheel speed sensor harness clamp

<> >>C<<
 <<C>>

<<D>> >>A<<

Removal steps

- Brake hose bracket
- Stabilizer link connection
- Self-locking nut (tie-rod end connection)
- Lower arm ball joint connection
- Driveshaft assembly
- Circlip
- Intercooler inlet air pipe A (Refer to GROUP 15 - Intercooler)
- Adapter bracket

REMOVAL SERVICE POINTS

For removal service points, follow the same service procedures as 10 MY OUTLANDER.