



SERVICE BULLETIN

GLOBAL AFTER SALES OFFICE, MITSUBISHI MOTORS CORPORATION

PURPOSE : INFORMATION	ISSUE NO. : MSB-13EXML52-001	DATE : 2013-02-18
SUBJECT : REMOVAL AND INSTALLATION OF SRS-ECU	<Destination/Model> <M/Y> (ALL DESTINATIONS) -	
GROUP : SRS AIRBAG	ALL VEHICLES WITH SRS AIRBAGS	

1. Description:

See the attached document for the information about the change of mention in the applicable service manual.

2. Details:

See the attached document

SRS CONTROL UNIT (SRS-ECU)

REMOVAL AND INSTALLATION

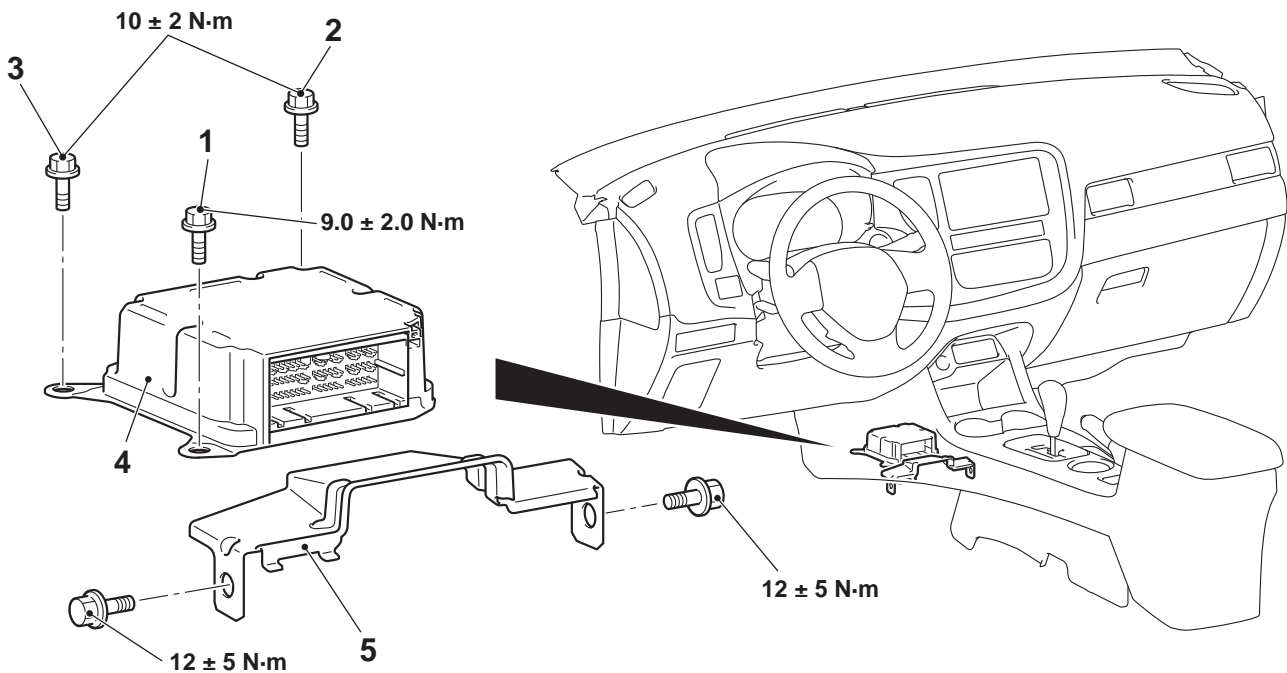
M1524002101911

⚠ CAUTION

- Disconnect the negative (–) battery terminal and wait for 60 seconds or more before starting work. Insulate the disconnected (–) terminal by wrapping the tape (Refer to the item 5 of Service Precautions). **<Added>**
- Never connect the negative battery terminal when the SRS-ECU is not installed securely. If you fail to do this, the air bag will deploy unintentionally, thus causing a serious injury.
- Never attempt to disassemble or repair SRS-ECU. If damaged, replace with a new SRS-ECU.
- Do not drop or subject SRS-ECU to impact or vibration. If denting, cracking, deformation, or rust is discovered in SRS-ECU, replace it with a new one.
- After deployment of the air bags, replace SRS-ECU with a new one.
- When the SRS-ECU is replaced, chassis number writing and coding must be performed. Perform the coding when SRS-ECU sets diagnosis code No. U1195 (coding incomplete). Refer to the "M.U.T.-III operation manual" and perform coding.

Pre-removal operation

- Turn the ignition switch to the LOCK (OFF) position.
- Disconnect the negative (–) battery terminal.



ACB05614AB

Removal steps

- Shift lever panel assembly (Refer to GROUP 52A – Front Floor Console Assembly).
- Rear heater duct A (Refer to GROUP 55 – Duct).
- 1. SRS-ECU mounting bolt (earth bolt)
- 2. SRS-ECU mounting bolt
- 3. SRS-ECU mounting bolt

<<A>>

Removal steps (Continued)

- 4. SRS-ECU
- 5. Control unit cover

Installation steps

- >>A<< 5. Control unit cover
- >>A<< 4. SRS-ECU
- >>B<< 3. SRS-ECU mounting bolt
- >>B<< 2. SRS-ECU mounting bolt
- >>B<< 1. SRS-ECU mounting bolt (earth bolt)